



www.edibon.com
 ↳ PRODUCTS
 ↳ 40.- ELECTRICITY

INTRODUCTION

An entry phone is a communication system which allows the access of people to a building or an enclosure without the owner has to go to open personally. These systems have evolved over the years and they have added elements to be more functional or aesthetic, such as lighting buttons to see them in the night or videocameras in order to see how is calling the door without the necessity to pick up the phone. These last with videocamera incorporated are the newest and the most used nowadays because they provide more confidence to the users.



ISO 9001: Quality Management (for Design, Manufacturing, Commercialization and After-sales service)



European Union Certificate (total safety)



Certificates ISO 14001 and ECO-Management and Audit Scheme (environmental management)



Certificate and Worlddidac Member

GENERAL DESCRIPTION

The Audio and Video Entry Phone Application, "AEL-AD14", has been designed by Edibon in order to show the functionality of this kind of entryphone.

Video Entry Phone is a stand-alone intercom application system used to manage calls made at the entrance to a building with access controlled by audiovisual communication between the inside and outside. The most important feature of video door entry is that it enables the person indoors to identify the visitor and, if they wish, engage in conversation and/or open the door to allow access to the person calling.

This application consists of a series of modules that allow the students to understand how the main elements of the Audio and Video Entry Phone Application work. Phone, video camera, door opener, interphone and phones power supply are devices located in panels with safety connectors in order to the students take experience cabling and testing these type of elements.

The AEL-AD14 includes the following modules:

- N-ALI02. Domestic Main Power Supply.
- N-POR04. Video camera.
- N-POR05. Phone/Monitor.
- N-POR06. Door Opener.
- N-POR08. Video-Interphone Power Supply.

Expansion learning software:

In addition, Edibon provides expansion learning software (AEL-AD14/ICAI) to reinforce knowledge about this field.

This software is formed by:

- ECM-SOF. EDIBON Classroom Manager (Instructor Software).
- ESL-SOF. EDIBON Student Labsoft (Student Software).

The application AEL-AD14 can be mounted on rack (option A) or on rail (option B):

Option A:

This application needs the following racks:

- N-RACK-M.

Optionally the AEL-WBR. Electrical Workbench (Rack) can be supplied to place the rack/s.

Option B:

This application can be mounted on rail.

Optionally the AEL-WBC. Electrical Workbench (Rail) can be supplied to mount the modules.

SPECIFICATIONS

The application includes the following modules:

- **N-ALI02. Domestic Main Power Supply.**

Supply voltage (Single-Phase): 230 VAC, PH+N+G.

ON-OFF removable key.

Output Voltage Connections:

Two Single-Phase: 230 VAC.

Single-Phase supply hose connecting plug.

Differential magnetothermal, 2 poles, 25 A, 30 mA AC 6 KA.



N-ALI02

- **N-POR04: Video Camera.**

Input voltage: 2 terminals of 18 VDC.

Video camera.

Entrance hall door button.

Adjust of the kind of bell and sound.

One output terminal L (data and audio control).

One relay output NO (2 terminals).



N-POR04

- **N-POR05: Phone/Monitor.**

Input voltage: 2 terminals of 18 VDC.

One input terminal L (data and audio control).



N-POR05

- **N-POR06: Door Opener.**

Input voltage: 2 terminals of 12 VAC.

Connectable to control module (entry phone).

Entrance hall door lock.



N-POR06

- **N-POR08: Video-Interphone Power Supply.**

Input voltage: 2 terminals of 230 VAC (L and N).

1 GND terminal.

Input frequency: 50/60 Hz.

Output voltage: 4 terminals: 2 of 18 VDC and 2 of 12 VAC.

Output current: 1.5 A.



N-POR08

- **All necessary cables to realize the practical exercises are included.**

Cables and Accessories, for normal operation.

Manuals:

This unit is **supplied with the following manuals**: Required Services, Assembly and Installation, Starting-up, Safety, Maintenance & Practices Manuals.

EXERCISES AND PRACTICAL POSSIBILITIES

- | | |
|--|--|
| 1.- Identify and measuring on the main power supply. | 4.- Real application of an audio and video entryphone system. |
| 2.- Checking the working of the video-interphone power supply. | 5.- Checking the communication between video interphone and telephone. |
| 3.- Wiring the supplying of video interphone, telephone and door opener. | 6.- Checking the working of the door opener with the telephone. |

REQUIRED SERVICES

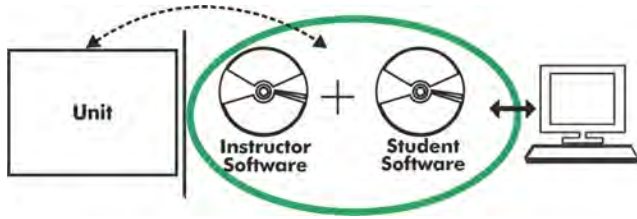
- | |
|--|
| - Electrical supply: three-phase, 380V/50 Hz or 208V/60 Hz, 20 Kw. |
|--|

DIMENSIONS AND WEIGHTS

- | |
|--|
| AEL-AD14: |
| - Dimensions: 640 x 320 x 670 mm approx.
(25.19 x 12.59 x 26.37 inches approx.) |
| - Weight: 60 Kg approx.
(132 pounds approx.) |

Optional

AEL-AD14/ICAI. Interactive Computer Aided Instruction Software System:



With no physical connection between unit and computer (PC), this complete software package consists of an Instructor Software (EDIBON Classroom Manager -ECM-SOF) totally integrated with the Student Software (EDIBON Student Labsoft -ESL-SOF). Both are interconnected so that the teacher knows at any moment what is the theoretical and practical knowledge of the students.

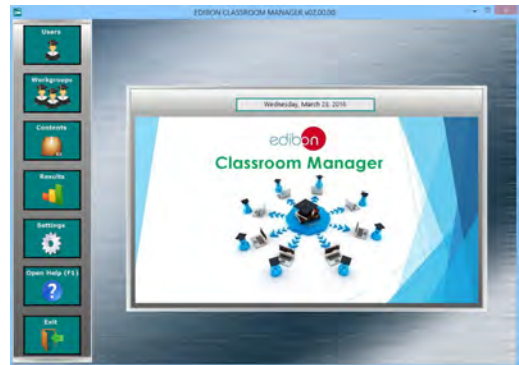
Instructor Software

- ECM-SOF. EDIBON Classroom Manager (Instructor Software).

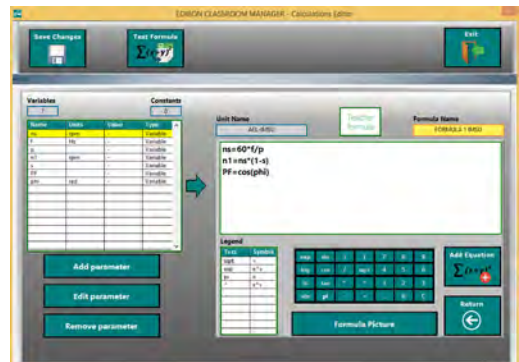
ECM-SOF is the application that allows the Instructor to register students, manage and assign tasks for workgroups, create own content to carry out Practical Exercises, choose one of the evaluation methods to check the Student knowledge and monitor the progression related to the planned tasks for individual students, workgroups, units, etc... so the teacher can know in real time the level of understanding of any student in the classroom.

Innovative features:

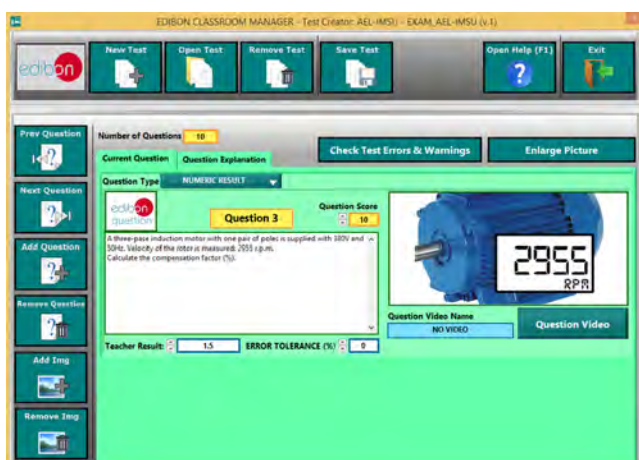
- User Data Base Management.
- Administration and assignment of Workgroup, Task and Training sessions.
- Creation and Integration of Practical Exercises and Multimedia Resources.
- Custom Design of Evaluation Methods.
- Creation and assignment of Formulas & Equations.
- Equation System Solver Engine.
- Updatable Contents.
- Report generation, User Progression Monitoring and Statistics.



ECM-SOF. EDIBON Classroom Manager (Instructor Software) Application Main Screen



ECAL. EDIBON Calculations Program Package - Formula Editor Screen



ETTE. EDIBON Training Test & Exam Program Package - Main Screen with Numeric Result Question



ERS. EDIBON Results & Statistics Program Package - Student Scores Histogram

Optional
Student Software

- ESL-SOF. **EDIBON Student Labsoft (Student Software)**.

ESL-SOF is the application addressed to the Students that helps them to understand theoretical concepts by means of practical exercises and to prove their knowledge and progression by performing tests and calculations in addition to Multimedia Resources. Default planned tasks and an Open workgroup are provided by EDIBON to allow the students start working from the first session. Reports and statistics are available to know their progression at any time, as well as explanations for every exercise to reinforce the theoretically acquired technical knowledge.

Innovative features:

- **Student Log-In & Self-Registration.**
- **Existing Tasks checking & Monitoring.**
- **Default contents & scheduled tasks available to be used from the first session.**
- **Practical Exercises accomplishment by following the Manual provided by EDIBON.**
- **Evaluation Methods to prove your knowledge and progression.**
- **Test self-correction.**
- **Calculations computing and plotting.**
- **Equation System Solver Engine.**
- **User Monitoring Learning & Printable Reports.**
- **Multimedia-Supported auxiliary resources.**

For more information see **ICAI** catalogue. Click on the following link:

www.edibon.com/en/files/expansion/ICAI/catalog



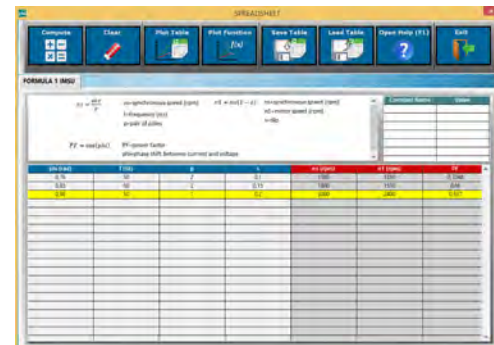
ESL-SOF. EDIBON Student LabSoft (Student Software)
Application Main Screen



EPE. EDIBON Practical Exercise Program Package Main Screen



ERS. EDIBON Results & Statistics Program Package - Question Explanation



ECAL. EDIBON Calculations Program Package Main Screen

* Specifications subject to change without previous notice, due to the convenience of improvement of the product.



C/ Del Agua, 14. Polígono Industrial San José de Valderas.
28918 LEGANÉS. (Madrid). ESPAÑA - SPAIN.
Tel: 34-91-6199363 Fax: 34-91-6198647
E-mail: edibon@edibon.com Web: www.edibon.com

Edition: ED01/17
Date: October/2017

REPRESENTATIVE:

