

* Minimum supply always includes: 1 + 2 + 3 + 4 + 5 + 6
(Computer not included in the supply)

① Unit: TEPGC. Computer Controlled Expansion Processes of a Perfect Gas Unit

Key features:

- **Advanced Real-Time SCADA.**
- **Open Control + Multicontrol + Real-Time Control.**
- **Specialized EDIBON Control Software based on LabVIEW.**
- **National Instruments Data Acquisition board (250 KS/s, kilo samples per second).**
- **Calibration exercises, which are included, teach the user how to calibrate a sensor and the importance of checking the accuracy of the sensors before taking measurements.**
- **Projector and/or electronic whiteboard compatibility allows the unit to be explained and demonstrated to an entire class at one time.**
- **Capable of doing applied research, real industrial simulation, training courses, etc.**
- **Remote operation and control by the user and remote control for EDIBON technical support, are always included.**
- **Totally safe, utilizing 4 safety systems (Mechanical, Electrical, Electronic & Software).**
- **Designed and manufactured under several quality standards.**
- **Optional ICAI software to create, edit and carry out practical exercises, tests, exams, calculations, etc.**
- **Apart from monitoring user's knowledge and progress reached.**
- **This unit has been designed for future expansion and integration. A common expansion is the EDIBON Scada-Net (ESN) System which enables multiple students to simultaneously operate many units in a network.**

**OPEN CONTROL
+
MULTICONTROL
+
REAL TIME CONTROL**

POWERED BY
NATIONAL INSTRUMENTS
LabVIEW™

www.edibon.com

- Products
- Products range
- Units
- 9. - Thermodynamics & Thermotechnics

For more information about Key Features, click here



ISO 9001: Quality Management (for Design, Manufacturing, Commercialization and After-sales service)



European Union Certificate (total safety)



Certificates ISO 14001 and ECO-Management and Audit Scheme (environmental management)



Certificate and Worlddidac Member

INTRODUCTION

The volume change work of a gas is the work required for the gas to pass from an initial volume to a final volume. If the volume decreases the gas will be compressed (it is a compression work) and if the volume increases the gas will be expanded (it is an expansion work).

In industry there are many expansion and compression processes of different gases.

The Computer Controlled Expansion Processes of a Perfect Gas Unit, "TEPGC", has been designed to study a series of basic thermodynamic processes using air as working fluid:

- Understanding the concept of state variable.
- Performance of gas expansions to become familiar with the First Law of Thermodynamics.
- Understanding the Second Law of Thermodynamics.
- Boyle's law, Joule's law and Gay-Lussac's law.

GENERAL DESCRIPTION

The "TEPGC" is a unit designed to demonstrate the expansion and compression processes of a perfect gas and the basic principles of thermodynamics.

The unit consists of two rigid vessels connected to each other. They are made of methacrylate to facilitate the visualization of the experiments and to thermally isolate their content from the external conditions. One of them works under pressure and the other under vacuum conditions.

There is a computer controlled air pump between both vessels. It includes pipes and valves that will be activated to select the different experiments. One of the objectives of the pump will be to pressurize the pressurized vessel with air and remove the air from the vacuum vessel.

A pressure sensor, a temperature sensor and a gauged overpressure safety valve are mounted on the upper cover of the pressurized vessel.

The capacity of the vacuum vessel is smaller compared to the other. There is a pressure sensor and a temperature sensor on its upper cover.

Both vessels are interconnected by two pipes of different section: a large diameter pipe that separates both vessels through a quick-acting valve, which will enable quick gas expansions, and a smaller diameter pipe that separates both vessels through a needle regulation valve, which will enable slow gas expansions.

The vessels can work either individually or jointly, allowing processes where air flows from a pressurized vessel to the atmosphere, from the atmosphere to a vacuum vessel or from a pressurized vessel to a vacuum vessel.

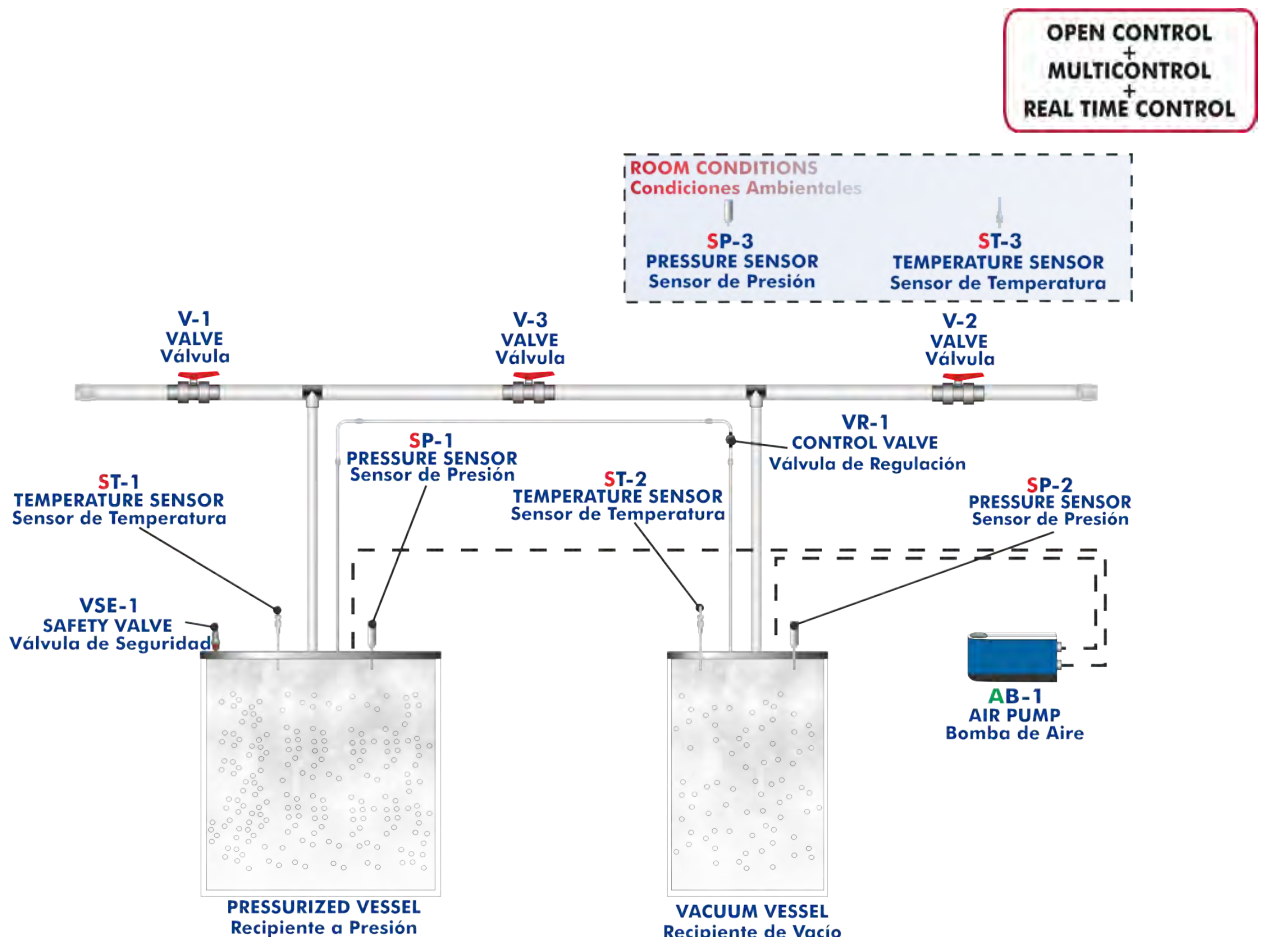
The unit includes a temperature sensor and a pressure sensor to measure the environmental conditions.

This Computer Controlled Unit is supplied with the EDIBON Computer Control System (SCADA), and includes: The unit itself + a Control Interface Box + a Data Acquisition Board + Computer Control, Data Acquisition and Data Management Software Packages, for controlling the process and all parameters involved in the process.



TEPGC detail

PROCESS DIAGRAM AND UNIT ELEMENTS ALLOCATION



With this unit there are several options and possibilities:

- Main items: 1, 2, 3, 4, 5 and 6.
- Optional items: 7, 8, 9, 10 and 11.

Let us describe first the main items (1 to 6):

① **TEPGC. Unit:**

Bench-top unit.

Anodized aluminum structure and panels of painted steel.

Main metallic elements of stainless steel.

Diagram in the front panel with distribution of the elements similar to the real one.

Two transparent (methacrylate) interconnected vessels, one operating under pressure (pressurized vessel) and the other under vacuum (vacuum vessel).

The capacity of the pressurized vessel is 18 l.

The capacity of the vacuum vessel is 10 l.

Each vessel with the following features:

Interconnection between the two vessels via a large diameter pipe and valve (fast change) and small diameter pipe and regulation valve (gradual change).

Connection to a large diameter pipe and valve to allow pressurization/generation of vacuum in the vessel to/from the atmosphere.

Connection to sensor to measure the pressure inside the vessel.

Connection to the air pump to allow the vessel to be pressurized or vacuum.

Temperature sensor for measuring the air temperature inside the vessel.

Safety valve to avoid over-pressurization in the pressurized vessel.

Air pump, computer controlled, power: 100 W. It allows the pressurization or generation of vacuum in the vessels.

Instrumentation:

Two temperature sensors, "J" type, one in each vessel.

Two pressure sensors, one in each vessel, range: 0-5 psi.

A room pressure sensor, range: 0-5 psi.

A room temperature, "J" type, sensor.

The complete unit includes as well:

Advanced Real-Time SCADA.

Open Control + Multicontrol + Real-Time Control.

Specialized EDIBON Control Software based on LabVIEW.

National Instruments Data Acquisition board (250 KS/s, kilo samples per second).

Calibration exercises, which are included, teach the user how to calibrate a sensor and the importance of checking the accuracy of the sensors before taking measurements.

Projector and/or electronic whiteboard compatibility allows the unit to be explained and demonstrated to an entire class at one time.

Capable of doing applied research, real industrial simulation, training courses, etc.

Remote operation and control by the user and remote control for EDIBON technical support, are always included.

Totally safe, utilizing 4 safety systems (Mechanical, Electrical, Electronic & Software).

Designed and manufactured under several quality standards.

Optional ICAI software to create, edit and carry out practical exercises, tests, exams, calculations, etc.

Apart from monitoring user's knowledge and progress reached.

This unit has been designed for future expansion and integration. A common expansion is the EDIBON Scada-Net (ESN) System which enables multiple students to simultaneously operate many units in a network.



Unit: TEPGC

② TEPGC/CIB. Control Interface Box:

The Control Interface Box is part of the SCADA system.

Control interface box with process diagram in the front panel and with the same distribution that the different elements located in the unit, for an easy understanding by the student.

All sensors, with their respective signals, are properly manipulated from -10V. to +10V. computer output.

Sensors connectors in the interface have different pines numbers (from 2 to 16), to avoid connection errors.

Single cable between the control interface box and computer.

The unit control elements are permanently computer controlled, without necessity of changes or connections during the whole process test procedure.

Simultaneous visualization in the computer of all parameters involved in the process.

Calibration of all sensors involved in the process.

Real time curves representation about system responses.

Storage of all the process data and results in a file.

Graphic representation, in real time, of all the process/system responses.

All the actuators' values can be changed at any time from the keyboard allowing the analysis about curves and responses of the whole process.

All the actuators and sensors values and their responses are displayed on only one screen in the computer.

Shield and filtered signals to avoid external interferences.

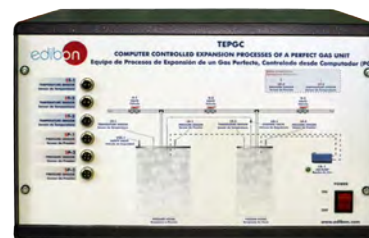
Real time computer control with flexibility of modifications from the computer keyboard of the parameters, at any moment during the process.

Real time computer control for pumps, compressors, heating elements, control valves, etc.

Real time computer control for parameters involved in the process simultaneously.

Open control allowing modifications, at any moment and in real time, of parameters involved in the process simultaneously.

Three safety levels, one mechanical in the unit, another electronic in the control interface and the third one in the control software.



TEPGC/CIB

③ DAB. Data Acquisition Board:

The Data Acquisition board is part of the SCADA system.

PCI Express Data acquisition board (National Instruments) to be placed in a computer slot. Bus PCI Express.

Analog input:

Number of channels= 16 single-ended or 8 differential. Resolution=16 bits, 1 in 65536.

Sampling rate up to: 250 KS/s (kilo samples per second).

Input range (V)=±10 V. Data transfers=DMA, interrupts, programmed I/O. DMA channels=6.

Analog output:

Number of channels=2. Resolution=16 bits, 1 in 65536.

Maximum output rate up to: 900 KS/s.

Output range(V)=±10 V. Data transfers=DMA, interrupts, programmed I/O.

Digital Input/Output:

Number of channels=24 inputs/outputs. D0 or DI Sample Clock frequency: 0 to 100 MHz.

Timing: Number of Counter/timers=4. Resolution: Counter/timers: 32 bits.



DAB

④ TEPGC/CCSOF. Computer Control + Data Acquisition + Data Management Software:

The three softwares are part of the SCADA system.

Compatible with actual Windows operating systems. Graphic and intuitive simulation of the process in screen. **Compatible with the industry standards.**

Registration and visualization of all process variables in an automatic and simultaneous way.

Flexible, open and multicontrol software, developed with actual windows graphic systems, acting simultaneously on all process parameters.

Management, processing, comparison and storage of data.

Sampling velocity up to 250 KS/s (kilo samples per second).

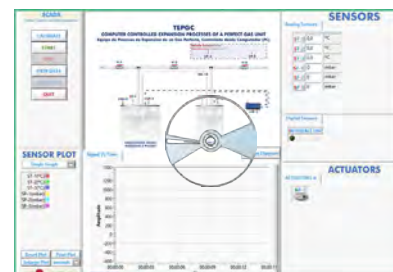
Calibration system for the sensors involved in the process.

It allows the registration of the alarms state and the graphic representation in real time.

Comparative analysis of the obtained data, after the process and modification of the conditions during the process.

Open software, allowing the teacher to modify texts, instructions. Teacher's and student's passwords to facilitate the teacher's control on the student, and allowing the access to different work levels.

This unit allows the 30 students of the classroom to visualize simultaneously all the results and the manipulation of the unit, during the process, by using a projector or an electronic whiteboard.



TEPGC/CCSOF

⑤ Cables and Accessories, for normal operation.

⑥ Manuals:

This unit is **supplied with 8 manuals**: Required Services, Assembly and Installation, Interface and Control Software, Starting-up, Safety, Maintenance, Calibration & Practices Manuals.

*References 1 to 6 are the main items: TEPGC + TEPGC/CIB + DAB + TEPGC/CCSOF + Cables and Accessories + Manuals are included in the minimum supply for enabling normal and full operation.

EXERCISES AND PRACTICAL POSSIBILITIES TO BE DONE WITH THE MAIN ITEMS

- 1.- To study of the pressure changes in the processes involves the 1st Law of Thermodynamics.
- 2.- Understanding of the 2nd Law of Thermodynamics and its corollaries.
- 3.- Different responses resulting from fast or slow changes in a process can be observed.
- 4.- Relationship between volume, pressure and temperature can be studied and used to determine other thermodynamic properties.
- 5.- Relationship between the pressure and temperature of air can be observed.
- 6.- To study the behaviour of a perfect gas and its describing equations.
- 7.- Study of the non-flow energy equation.
- 8.- Study of the unsteady-flow energy equation (in vacuum mode).
- 9.- Study of an adiabatic reversible process (isentropic expansion).
- 10.-Study of a constant volume process.
- 11.-Study of the conversion of pressure units.
- 12.-Study of an adiabatic irreversible process.
- 13.-Study of a constant internal energy process.
- 14.-Study of the polytropic processes, with the limiting case of $n=\gamma$.
- 15.-Study of the relative and absolute pressures.

Additional practical possibilities:

- 16.-Sensors calibration.

Other possibilities to be done with this Unit:

- 17.-Many students view results simultaneously.
To view all results in real time in the classroom by means of a projector or an electronic whiteboard.
- 18.-Open Control, Multicontrol and Real Time Control.
This unit allows intrinsically and/or extrinsically to change the span, gains; proportional, integral, derivative parameters; etc, in real time.
- 19.-The Computer Control System with SCADA allows a real industrial simulation.
- 20.-This unit is totally safe as uses mechanical, electrical and electronic, and software safety devices.
- 21.-This unit can be used for doing applied research.
- 22.-This unit can be used for giving training courses to Industries even to other Technical Education Institutions.
- 23.-Control of the TEPGC unit process through the control interface box without the computer.
- 24.-Visualization of all the sensors values used in the TEPGC unit process.
 - By using PLC-PI additional 19 more exercises can be done.
 - Several other exercises can be done and designed by the user.

REQUIRED SERVICES

- Electrical supply: single-phase 220V/50Hz or 110V/60Hz.
- Computer.

DIMENSIONS AND WEIGHTS

TEPGC:

Unit:

- Dimensions: 700 x 550 x 1100 mm. approx.
(27.55 x 21.65 x 43.30 inches approx.)
- Weight: 50 Kg. approx.
(110.23 pounds approx.)

Control-Interface Box:

- Dimensions: 490 x 330 x 310 mm. approx.
(19.29 x 12.99 x 12.20 inches approx.)
- Weight: 10 Kg. approx.
(22 pounds approx.)

SCADA
Main screen

The SCADA Main screen displays the TEPGC (Computer Controlled Expansion Processes of a Perfect Gas Unit) interface. It includes a central process diagram with components like V-1, V-3, VR-14, V-2, VSE-1, ST-1, ISP-1, ST-2, SP-2, and AB-1. A real-time plot shows Amplitude vs Time. The interface is divided into several sections: a control panel on the left with buttons for CALIBRATE, START, STOP, VIEW DATA, SAVE DATA, and QUIT; a SENSORS panel on the top right showing analog and digital sensor readings; and an ACTUATORS panel on the bottom right. A SENSIV PLOT section on the bottom left allows for channel selection and plot parameters.

- ❶ Main software operation possibilities.
- ❷ Sensors displays, real time values, and extra output parameters. Sensors: ST=Temperature sensor. SP=Pressure sensor.
- ❸ Actuators controls. Actuator: AB=Pump.
- ❹ Channel selection and other plot parameters.
- ❺ Real time graphics displays.

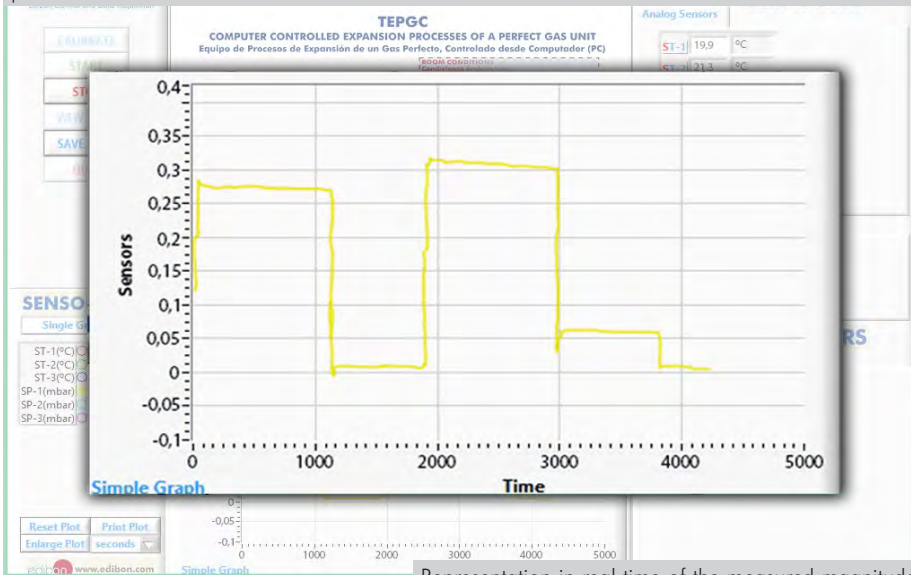
Software for Sensors Calibration
Example of screens

The calibration software consists of two main windows: 'Simple Calibrate' and 'Muticalibrate'. The 'Simple Calibrate' window shows settings for a specific sensor (ST-1), including calibration units, current gain, current offset, and a table of measured values. The 'Muticalibrate' window provides a multi-channel calibration interface with a table for multiple sensors, allowing for simultaneous calibration of multiple channels. Both windows include options to restore factory gains and offsets, and buttons for saving and exiting the calibration process.

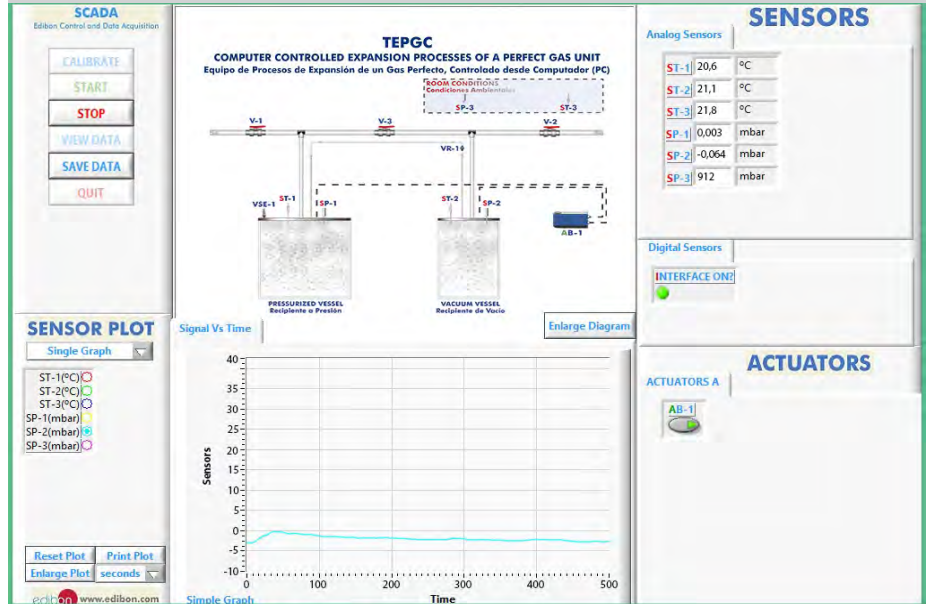
The teacher and the students can calibrate the unit with a password provided by EDIBON.
The teacher can restore the factory calibration any time.

SOME REAL RESULTS OBTAINED FROM THIS UNIT

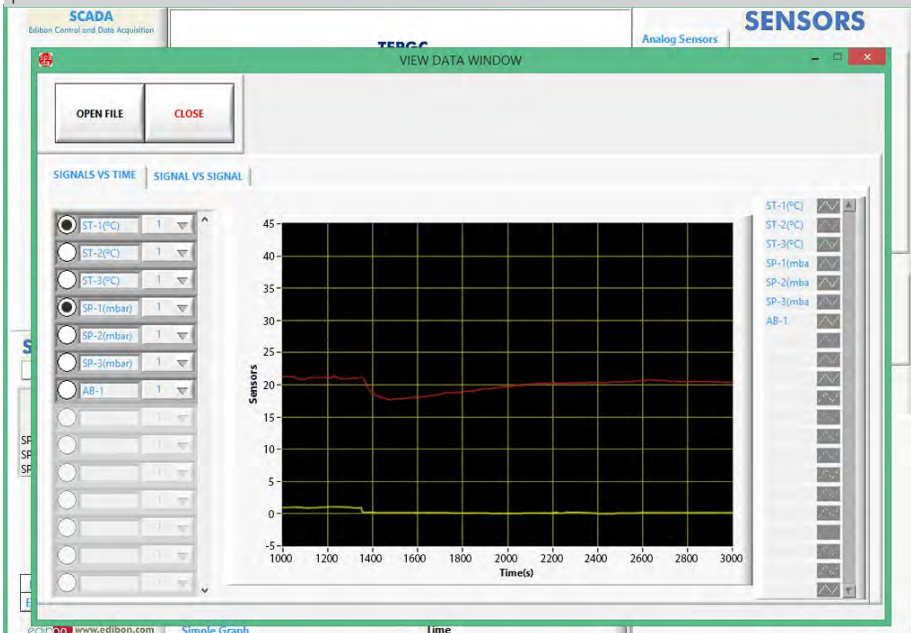
Representation in real time of the measured magnitudes. A single graph showing the pressure of the pressurized vessel.



Representation in real time of the measured magnitudes. A single graph showing the pressure of the pressurized vessel.



Representation in real time of the measured magnitudes. A single graph showing the temperature and pressure of the vacuum vessel.



b) Technical and Vocational Education configuration

⑧ **TEPGC/ICAI. Interactive Computer Aided Instruction Software System.**

This complete software package consists of an Instructor Software (EDIBON Classroom Manager -ECM-SOF) totally integrated with the Student Software (EDIBON Student Labsoft -ESL-SOF). Both are interconnected so that the teacher knows at any moment what is the theoretical and practical knowledge of the students.

This software is optional and can be used additionally to items (1 to 6).

-ECM-SOF. EDIBON Classroom Manager (Instructor Software).

ECM-SOF is the application that allows the Instructor to register students, manage and assign tasks for workgroups, create own content to carry out Practical Exercises, choose one of the evaluation methods to check the Student knowledge and monitor the progression related to the planned tasks for individual students, workgroups, units, etc... so the teacher can know in real time the level of understanding of any student in the classroom.

Innovative features:

User Data Base Management.

Administration and assignment of Workgroup, Task and Training sessions.

Creation and Integration of Practical Exercises and Multimedia Resources.

Custom Design of Evaluation Methods.

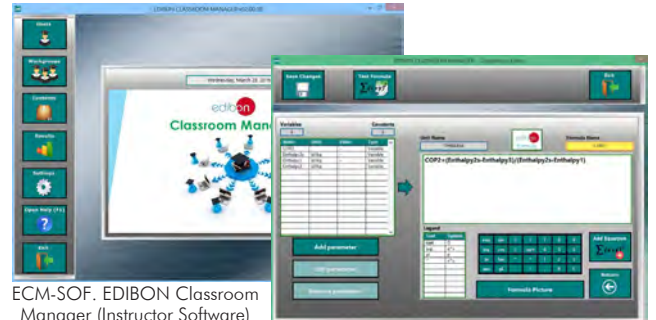
Creation and assignment of Formulas & Equations.

Equation System Solver Engine.

Updatable Contents.

Report generation, User Progression Monitoring and Statistics.

Instructor Software



ECM-SOF. EDIBON Classroom Manager (Instructor Software) Application main screen

ECAL. EDIBON Calculations Program Package - Formula Editor Screen



ERS. EDIBON Results & Statistics Program Package - Student Scores Histogram

ETTE. EDIBON Training Test & Exam Program Package - Main Screen with Numeric Result Question

-ESL-SOF. EDIBON Student Labsoft (Student Software).

ESL-SOF is the application addressed to the Students that helps them to understand theoretical concepts by means of practical exercises and to prove their knowledge and progression by performing tests and calculations in addition to Multimedia Resources. Default planned tasks and an Open workgroup are provided by EDIBON to allow the students start working from the first session. Reports and statistics are available to know their progression at any time, as well as explanations for every exercise to reinforce the theoretically acquired technical knowledge.

Innovative features:

Student Log-In & Self-Registration.

Existing Tasks checking & Monitoring.

Default contents & scheduled tasks available to be used from the first session.

Practical Exercises accomplishment by following the Manual provided by EDIBON.

Evaluation Methods to prove your knowledge and progression.

Test self-correction.

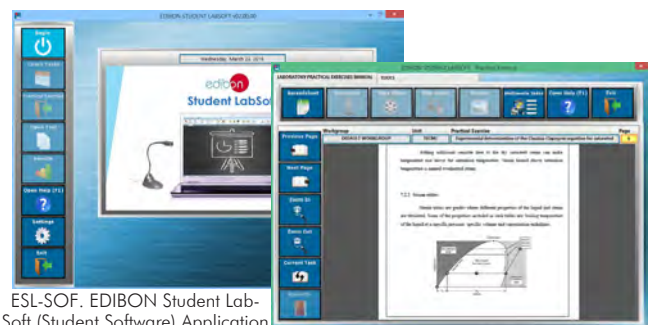
Calculations computing and plotting.

Equation System Solver Engine.

User Monitoring Learning & Printable Reports.

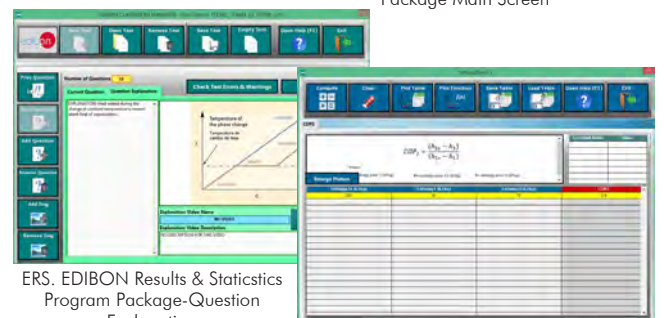
Multimedia-Supported auxiliary resources.

Student Software



ESL-SOF. EDIBON Student Labsoft (Student Software) Application Main Screen

EPE. EDIBON Practical Exercise Program Package Main Screen



ERS. EDIBON Results & Statistics Program Package-Question Explanation

ECAL. EDIBON Calculations Program Package Main Screen

For more information see ICAI catalogue. Click on the following link:

www.edibon.com/products/catalogues/en/ICAI.pdf

⑨ **TEPGC/FSS. Faults Simulation System.**

Faults Simulation System (FSS) is a Software package that simulates several faults in any EDIBON Computer Controlled Unit. It is useful for Technical and Vocational level.

The "FAULTS" mode consists in causing several faults in the unit normal operation. The student must find them and solve them. There are several kinds of faults that can be grouped in the following sections:

Faults affecting the sensors measurement:

- An incorrect calibration is applied to them.
- Non-linearity.

Faults affecting the actuators:

- Actuators channels interchange at any time during the program execution.
- Response reduction of an actuator.

Faults in the controls execution:

- Inversion of the performance in ON/OFF controls.
- Reduction or increase of the calculated total response.
- The action of some controls is annulled.

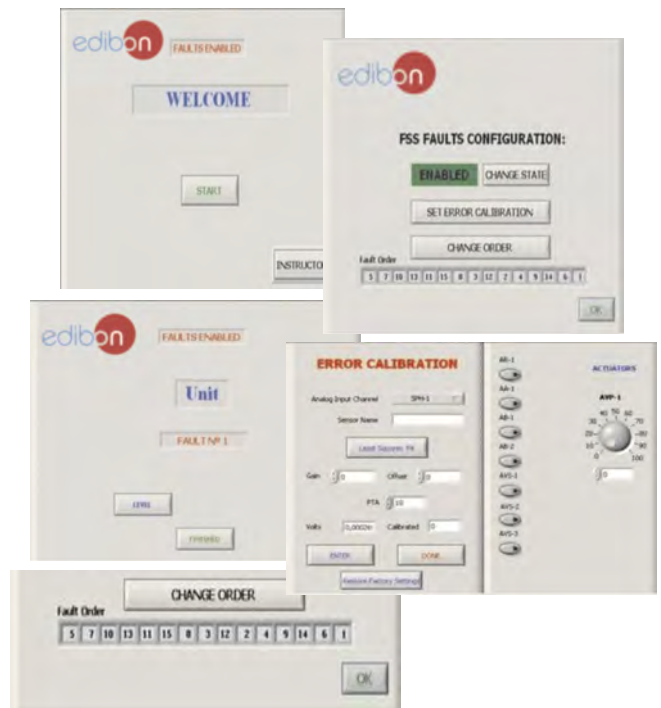
On/off faults:

- Several on/off faults can be included.

For more information see FSS catalogue. Click on the following link:

www.edibon.com/products/catalogues/en/FSS.pdf

Example of some screens



c) Multipost Expansions options

⑩ **Mini ESN. EDIBON Mini Scada-Net System.**

Mini ESN. EDIBON Mini Scada-Net System allows up to 30 students to work with a Teaching Unit in any laboratory, simultaneously. It is useful for both, Higher Education and/or Technical and Vocational Education.

The Mini ESN system consists of the adaptation of any EDIBON Computer Controlled Unit with SCADA integrated in a local network.

This system allows to view/control the unit remotely, from any computer integrated in the local net (in the classroom), through the main computer connected to the unit. Then, the number of possible users who can work with the same unit is higher than in an usual way of working (usually only one).

Main characteristics:

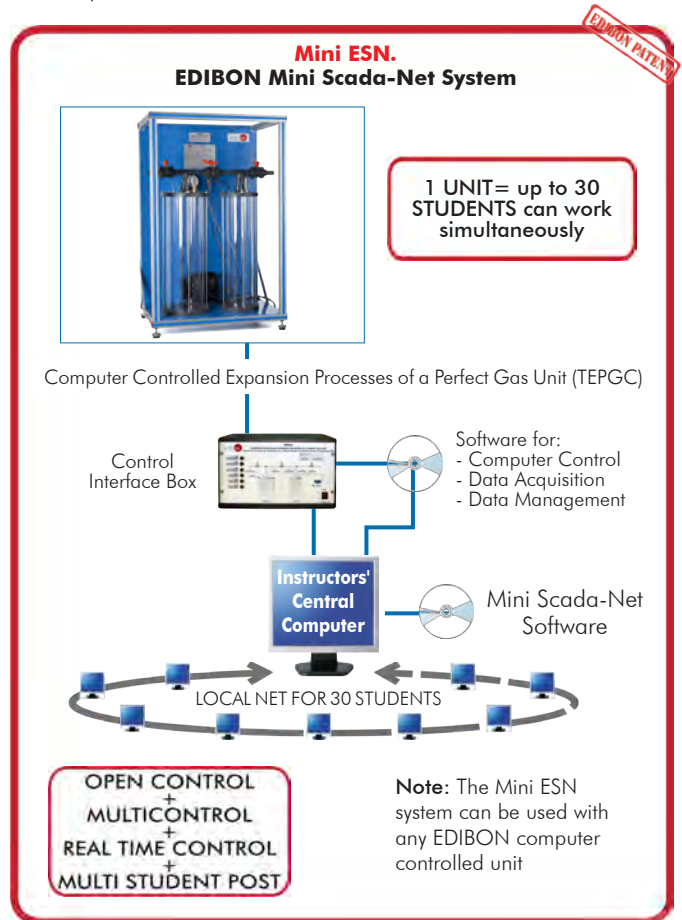
- It allows up to 30 students to work simultaneously with the EDIBON Computer Controlled Unit with SCADA, connected in a local net.
- Open Control + Multicontrol + Real Time Control + Multi Student Post.
- Instructor controls and explains to all students at the same time.
- Any user/student can work doing "real time" control/multicontrol and visualisation.
- Instructor can see in the computer what any user/student is doing in the unit.
- Continuous communication between the instructor and all the users/students connected.

Main advantages:

- It allows an easier and quicker understanding.
- This system allows you can save time and cost.
- Future expansions with more EDIBON Units.

For more information see Mini ESN catalogue. Click on the following link:

www.edibon.com/products/catalogues/en/Mini-ESN.pdf



Note: The Mini ESN system can be used with any EDIBON computer controlled unit

⑪ **ESN. EDIBON Scada-Net System.**

This unit can be integrated, in the future, into a Complete Laboratory with many Units and many Students.

For more information see ESN catalogue. Click on the following link:

www.edibon.com/products/catalogues/en/units/thermodynamicsthermotechnics/esn-thermodynamics/ESN-THERMODYNAMICS.pdf

ORDER INFORMATION

Main items (always included in the supply)

Minimum supply always includes:

- ① Unit: TEPGC. Computer Controlled Expansion Processes of a Perfect Gas Unit.
- ② TEPGC/CIB. Control Interface Box.
- ③ DAB. Data Acquisition Board.
- ④ TEPGC/CCSOF. Computer Control + Data Acquisition + Data Management Software.
- ⑤ Cables and Accessories, for normal operation.
- ⑥ Manuals.

*IMPORTANT: Under TEPGC we always supply all the elements for immediate running as 1, 2, 3, 4, 5 and 6.

Optional items (supplied under specific order)

a) Industrial configuration

- ⑦ PLC. Industrial Control using PLC (it includes PLC-PI Module plus PLC-SOF Control Software):
 - PCL-PI. PLC Module.
 - TEPGC/PLC-SOF. PLC Control Software.

b) Technical and Vocational configuration

- ⑧ TEPGC/ICAI. Interactive Computer Aided Instruction Software System.
- ⑨ TEPGC/FSS. Faults Simulation System.

c) Multipost Expansions options

- ⑩ Mini ESN. EDIBON Mini Scada-Net System.
- ⑪ ESN. EDIBON Scada-Net System.

① TEPGC. Unit:

Bench-top unit.
 Anodized aluminum structure and panels of painted steel.
 Main metallic elements of stainless steel.
 Diagram in the front panel with distribution of the elements similar to the real one.
 Two transparent (methacrylate) interconnected vessels, one operating under pressure (pressurized vessel) and the other under vacuum (vacuum vessel).
 The capacity of the pressurized vessel is 18 l.
 The capacity of the vacuum vessel is 10 l.
 Each vessel with the following features:
 Interconnection between the two vessels via a large diameter pipe and valve (fast change) and small diameter pipe and regulation valve (gradual change).
 Connection to a large diameter pipe and valve to allow pressurization/generation of vacuum in the vessel to/from the atmosphere.
 Connection to sensor to measure the pressure inside the vessel.
 Connection to the air pump to allow the vessel to be pressurized or vacuum.
 Temperature sensor for measuring the air temperature inside the vessel.
 Safety valve to avoid over-pressurization in the pressurized vessel.
 Air pump, computer controlled, power: 100 W. It allows the pressurization or generation of vacuum in the vessels.
 Instrumentation:
 Two temperature sensors, "J" type, one in each vessel.
 Two pressure sensors, one in each vessel, range: 0-5 psi.
 A room pressure sensor, range: 0-5 psi.
 A room temperature, "J" type, sensor.
 The complete unit includes as well:
 Advanced Real-Time SCADA.
 Open Control + Multicontrol + Real-Time Control.
 Specialized EDIBON Control Software based on LabVIEW.
 National Instruments Data Acquisition board (250 KS/s, kilo samples per second).
 Calibration exercises, which are included, teach the user how to calibrate a sensor and the importance of checking the accuracy of the sensors before taking measurements.
 Projector and/or electronic whiteboard compatibility allows the unit to be explained and demonstrated to an entire class at one time.
 Capable of doing applied research, real industrial simulation, training courses, etc.
 Remote operation and control by the user and remote control for EDIBON technical support, are always included.
 Totally safe, utilizing 4 safety systems (Mechanical, Electrical, Electronic & Software).
 Designed and manufactured under several quality standards.
 Optional ICAI software to create, edit and carry out practical exercises, tests, exams, calculations, etc.
 Apart from monitoring user's knowledge and progress reached.
 This unit has been designed for future expansion and integration. A common expansion is the EDIBON Scada-Net (ESN) System which enables multiple students to simultaneously operate many units in a network.

② TEPGC/CIB. Control Interface Box:

The Control Interface Box is part of the SCADA system.
 Control interface box with process diagram in the front panel.
 The unit control elements are permanently computer controlled.
 Simultaneous visualization in the computer of all parameters involved in the process.
 Calibration of all sensors involved in the process.
 Real time curves representation about system responses.
 All the actuators' values can be changed at any time from the keyboard allowing the analysis about curves and responses of the whole process.
 Shield and filtered signals to avoid external interferences.
 Real time computer control with flexibility of modifications from the computer keyboard of the parameters, at any moment during the process.
 Real time computer control for parameters involved in the process simultaneously.
 Open control allowing modifications, at any moment and in real time, of parameters involved in the process simultaneously.
 Three safety levels, one mechanical in the unit, another electronic in the control interface and the third one in the control software.

③ DAB. Data Acquisition Board:

The Data Acquisition board is part of the SCADA system.
 PCI Express Data acquisition board (National Instruments) to be placed in a computer slot.
 Analog input: Channels= 16 single-ended or 8 differential. Resolution=16 bits, 1 in 65536. Sampling rate up to: 250 KS/s (kilo samples per second).
 Analog output: Channels=2. Resolution=16 bits, 1 in 65536.
 Digital Input/Output: Channels=24 inputs/outputs.

④ TEPGC/CCSOF. Computer Control +Data Acquisition+Data Management Software:

The three softwares are part of the SCADA system.
 Compatible with the industry standards.
 Flexible, open and multicontrol software, developed with actual windows graphic systems, acting simultaneously on all process parameters.
 Management, processing, comparison and storage of data.
 Sampling velocity up to 250 KS/s (kilo samples per second).
 Calibration system for the sensors involved in the process.
 It allows the registration of the alarms state and the graphic representation in real time.
 Open software, allowing the teacher to modify texts, instructions. Teacher's and student's passwords to facilitate the teacher's control on the student, and allowing the access to different work levels.
 This unit allows the 30 students of the classroom to visualize simultaneously all the results and the manipulation of the unit, during the process, by using a projector or an electronic whiteboard.

⑤ Cables and Accessories, for normal operation.

⑥ Manuals:

This unit is supplied with 8 manuals: Required Services, Assembly and Installation, Interface and Control Software, Starting-up, Safety, Maintenance, Calibration & Practices Manuals.

Exercises and Practical Possibilities to be done with the Main Items

- 1.- To study of the pressure changes in the processes involves the 1st Law of Thermodynamics.
- 2.- Understanding of the 2nd Law of Thermodynamics and its corollaries.
- 3.- Different responses resulting from fast or slow changes in a process can be observed.
- 4.- Relationship between volume, pressure and temperature can be studied and used to determine other thermodynamic properties.
- 5.- Relationship between the pressure and temperature of air can be observed.
- 6.- To study the behaviour of a perfect gas and its describing equations.
- 7.- Study of the non-flow energy equation.
- 8.- Study of the unsteady-flow energy equation (in vacuum mode).
- 9.- Study of an adiabatic reversible process (isentropic expansion).
- 10.-Study of a constant volume process.
- 11.-Study of the conversion of pressure units.
- 12.-Study of an adiabatic irreversible process.
- 13.-Study of a constant internal energy process.
- 14.-Study of the polytropic processes, with the limiting case of $n=\gamma$.
- 15.-Study of the relative and absolute pressures.

Additional practical possibilities:

- 16.-Sensors calibration.

Other possibilities to be done with this Unit:

- 17.-Many students view results simultaneously.

To view all results in real time in the classroom by means of a projector or an electronic whiteboard.

- 18.-Open Control, Multicontrol and Real Time Control.

This unit allows intrinsically and/or extrinsically to change the span, gains; proportional, integral, derivative parameters; etc, in real time.

- 19.-The Computer Control System with SCADA allows a real industrial simulation.

- 20.-This unit is totally safe as uses mechanical, electrical and electronic, and software safety devices.

- 21.-This unit can be used for doing applied research.

- 22.-This unit can be used for giving training courses to Industries even to other Technical Education Institutions.

- 23.-Control of the TEPGC unit process through the control interface box without the computer.

- 24.-Visualization of all the sensors values used in the TEPGC unit process.

- By using PLC-PI additional 19 more exercises can be done.

- Several other exercises can be done and designed by the user.

a) Industrial configuration

⑦ PLC. Industrial Control using PLC (it includes PLC-PI Module plus PLC-SOF Control Software):

-PLC-PI. PLC Module:

Metallic box.
 Circuit diagram in the module front panel.
 Digital inputs (X) and Digital outputs (Y) block: 16 Digital inputs. 14 Digital outputs.
 Analog inputs block: 16 Analog inputs.
 Analog outputs block: 4 Analog outputs.
 Touch screen.
 Panasonic PLC:
 High-speed scan of 0.32 μ sec. Program capacity of 32 Ksteps. High-speed counter. Multi-point PID control.
 Digital inputs/outputs and analog inputs/outputs Panasonic modules.

-TEPGC/PLC-SOF. PLC Control Software:

For this particular unit, always included with PLC supply.

Practices to be done with PLC-PI:

- 1.- Control of the particular unit process through the control interface box without the computer.
- 2.- Visualization of all the sensors values used in the particular unit process.
- 3.- Calibration of all sensors included in the particular unit process.
- 4.- Hand on of all the actuators involved in the particular unit process.
- 5.- Realization of different experiments, in automatic way, without having in front the particular unit. (These experiments can be decided previously).
- 6.- Simulation of outside actions, in the cases do not exist hardware elements. (Example: test of complementary tanks, complementary industrial environment to the process to be studied, etc).
- 7.- PLC hardware general use.
- 8.- PLC process application for the particular unit.
- 9.- PLC structure.
- 10.-PLC inputs and outputs configuration.
- 11.-PLC configuration possibilities.
- 12.-PLC program languages.
- 13.-PLC different programming standard languages (ladder diagram (LD), structured text (ST), instructions list (IL), sequential function chart (SFC), function block diagram (FBD)).
- 14.-New configuration and development of new process.
- 15.-Hand on an established process.
- 16.-To visualize and see the results and to make comparisons with the particular unit process.
- 17.-Possibility of creating new process in relation with the particular unit.
- 18.-PLC Programming Exercises.
- 19.-Own PLC applications in accordance with teacher and student requirements.

b) Technical and Vocational Education configuration

⑧ TEPGC/ICAI. Interactive Computer Aided Instruction Software System.

This complete software package consists of an Instructor Software (EDIBON Classroom Manager -ECM-SOF) totally integrated with the Student Software (EDIBON Student Labsoft -ESL-SOF). Both are interconnected so that the teacher knows at any moment what is the theoretical and practical knowledge of the students.

-ECM-SOF. EDIBON Classroom Manager (Instructor Software).

ECM-SOF is the application that allows the Instructor to register students, manage and assign tasks for workgroups, create own content to carry out Practical Exercises, choose one of the evaluation methods to check the Student knowledge and monitor the progression related to the planned tasks for individual students, workgroups, units, etc...so the teacher can know in real time the level of understanding of any student in the classroom.

Innovative features:

- User Data Base Management.
- Administration and assignment of Workgroup, Task and Training sessions.
- Creation and Integration of Practical Exercises and Multimedia Resources.
- Custom Design of Evaluation Methods.
- Creation and assignment of Formulas & Equations.
- Equation System Solver Engine.
- Updatable Contents.
- Report generation, User Progression Monitoring and Statistics.

-ESL-SOF. EDIBON Student Labsoft (Student Software).

ESL-SOF is the application addressed to the Students that helps them to understand theoretical concepts by means of practical exercises and to prove their knowledge and progression by performing tests and calculations in addition to Multimedia Resources. Default planned tasks and an Open workgroup are provided by EDIBON to allow the students start working from the first session. Reports and statistics are available to know their progression at any time, as well as explanations for every exercise to reinforce the theoretically acquired technical knowledge.

Innovative features:

- Student Log-In & Self-Registration.
- Existing Tasks checking & Monitoring.
- Default contents & scheduled tasks available to be used from the first session.
- Practical Exercises accomplishment by following the Manual provided by EDIBON.
- Evaluation Methods to prove your knowledge and progression.
- Test self-correction.
- Calculations computing and plotting.
- Equation System Solver Engine.
- User Monitoring Learning & Printable Reports.
- Multimedia-Supported auxiliary resources.

Tender Specifications (for optional items)

b) Technical and Vocational Education configuration

⑨ **TEPGC/FSS. Faults Simulation System.**

Faults Simulation System (FSS) is a Software package that simulates several faults in any EDIBON Computer Controlled Unit. The "FAULTS" mode consists in causing several faults in the unit normal operation. The student must find them and solve them.

There are several kinds of faults that can be grouped in the following sections:

Faults affecting the sensors measurement:

- An incorrect calibration is applied to them.
- Non-linearity.

Faults affecting the actuators:

- Actuators channels interchange at any time during the program execution.
- Response reduction of an actuator.

Faults in the controls execution:

- Inversion of the performance in ON/OFF controls.
- Reduction or increase of the calculated total response.
- The action of some controls is annulled.

On/off faults:

- Several on/off faults can be included.

c) Multipost Expansions options

⑩ **Mini ESN. EDIBON Mini Scada-Net System.**

EDIBON Mini Scada-Net System allows up to 30 students to work with a Teaching Unit in any laboratory, simultaneously.

The Mini ESN system consists of the adaptation of any EDIBON Computer Controlled Unit with SCADA integrated in a local network.

This system allows to view/control the unit remotely, from any computer integrated in the local net (in the classroom), through the main computer connected to the unit.

Main characteristics:

- It allows up to 30 students to work simultaneously with the EDIBON Computer Controlled Unit with SCADA, connected in a local net.
- Open Control + Multicontrol + Real Time Control + Multi Student Post.
- Instructor controls and explains to all students at the same time.
- Any user/student can work doing "real time" control/multicontrol and visualisation.
- Instructor can see in the computer what any user/student is doing in the unit.
- Continuous communication between the instructor and all the users/students connected.

Main advantages:

- It allows an easier and quicker understanding.
- This system allows you can save time and cost.
- Future expansions with more EDIBON Units.

The system basically will consist of:

This system is used with a Computer Controlled Unit.

- Instructor's computer.
- Students' computers.
- Local Network.
- Unit-Control Interface adaptation.
- Unit Software adaptation.
- Webcam.
- Mini ESN Software to control the whole system.
- Cables and accessories required for a normal operation.

* Specifications subject to change without previous notice, due to the convenience of improvement of the product.



C/ Del Agua, 14. Polígono Industrial San José de Valderas.
28918 LEGANÉS. (Madrid). SPAIN.
Phone: 34-91-6199363 FAX: 34-91-6198647
E-mail: edibon@edibon.com WEB site: www.edibon.com

Edition: ED01/16
Date: November/2016

REPRESENTATIVE: