



① Unit: AEL-SAPV. Stand-Alone Photovoltaic Application

Key features:

- **Advanced Real-Time SCADA.**
- **Open Control + Multicontrol + Real-Time Control.**
- **Specialized EDIBON Control Software based on LabVIEW.**
- **Projector and/or electronic whiteboard compatibility allows the unit to be explained and demonstrated to an entire class at one time.**
- **Capable of doing applied research, real industrial simulation, training courses, etc.**
- **Remote operation and control by the user and remote control for EDIBON technical support, are always included.**
- **Totally safe, utilizing 4 safety systems (Mechanical, Electrical, Electronic & Software).**
- **Designed and manufactured under several quality standards.**
- **Optional ICAI software to create, edit and carry out practical exercises, tests, exams, calculations, etc.**
Apart from monitoring user's knowledge and progress reached.
- **This unit has been designed for future expansion and integration. A common expansion is the EDIBON Scada-Net (ESN) System which enables multiple students to simultaneously operate many units in a network.**



For more information about Key Features, click here



ISO 9001: Quality Management (for Design, Manufacturing, Commercialization and After-sales service)



European Union Certificate (total safety)



Certificates ISO 14001 and ECO-Management and Audit Scheme (environmental management)



Certificate and Worlddidac Member

INTRODUCTION

Energy saving and environmental pollution reduction are crucial global issues. Using renewable energies as alternative sources to fossil fuels can address both issues, with great benefits especially in countries where traditional energy sources are scarce.

In the last two decades, photovoltaic has evolved from small scale applications towards becoming a mainstream electricity source.

GENERAL DESCRIPTION

The Stand-Alone Photovoltaic Application, "AEL-SAPV", has been designed by EDIBON to study the energy production by photovoltaic panels.

This application will provide the user with the knowledge and the essential skills about the photovoltaic panel operation and the components that take part in the production of electrical energy from solar energy. For this purpose, the unit includes a specific manual explaining, at theoretical level, the relative aspects to the components of this system such as the charge controller and the current inverter.

The theme covers from the placement and orientation of the solar panels to produce the maximum electrical energy to the obtaining the characteristic curve of the solar panel. Furthermore, a set of included and optional modules are provided in order to put into practice all the theoretical concepts previously studied in the manual, as the feeding of DC and AC loads from solar energy.

The "AEL-SAPV" includes the following modules:

- N-ALI01. Industrial Main Power Supply.
- LP3. 3 Lamps Panel.
- FVP96. 96W Photovoltaic Panel.
- N-SWIN. Sine Wave Inverter.
- N-BER. Battery Electronic Regulator.
- BAT2. 70 Ah Battery.
- N-LAM16. Halogen Lamp Module.
- N-ES20. 12 VDC Load Module.

Optional modules:

- N-REV. Variable Resistor.
- N-MED84. Photovoltaic Parameters Meter.
- N-EALD. Network Analyzer Unit with Computer Data Acquisition.

Optional SCADA software:

- AEL-SAPV/CCSOF. Computer Control + Data Acquisition + Data Management Software.

Optional learning software:

In addition, EDIBON provides optional software (AEL-SAPV/ICAI) to reinforce knowledge about this field. This software is formed by:

- ECM-SOF. EDIBON Classroom Manager (Instructor Software).
- ESL-SOF. EDIBON Student Labsoft (Student Software).

The application AEL-PHVG can be mounted on rack (option A) or on rail (option B):

Option A:

This application needs the following racks:

- N-RACK-A.

Optionally the AEL-WBR. Electrical Workbench (Rack) can be supplied to place the rack/s.

Option B:

This application can be mounted on rail.

Optionally the AEL-WBC. Electrical Workbench (Rail) can be supplied to mount the modules.

Optionally this Computer Controlled Unit is supplied with the EDIBON Computer Control System (SCADA), and includes: The unit itself + Computer Control, Data Acquisition and Data Management Software Packages, for controlling the process and all parameters involved in the process.

With this unit there are several options and possibilities:

- Main items: 1, 3 and 4.
- Optional items: 2, 5, 6 and 7.

Let us describe first the main items (1 to 4):

① **AEL-SAPV. Unit:**

The application includes the following modules:

- **N-ALI01. Industrial Main Power Supply.**
Supply voltage: 400 VAC, 3PH+N+G.
ON-OFF removable key.
Output voltage connections:
Three-Phase + Neutral: 400 VAC.
Single-Phase: 230 VAC.
Three-Phase supply hose with IP44 3PN+E 32A 400V connecting plug.
Differential magnetothermal, 4 poles, 25A, 300mA AC 6KA.
- **LP3. 3 Lamps Panel.**
Power: 3 x 250 W.
Switch ON/OFF.
Intensity Regulator.
Aluminium frame.
- **FVP96. 96W Photovoltaic Panel.**
Maximum Power: 96 W.
Voltage at maximum power: 17,8 V.
Current at maximum power: 3,7 A.
Short-Circuit Current: 4,05 A.
Opened-Circuit Voltage: 22,25 V.
- **N-SWIN. Sine Wave Inverter.**
Nominal power: 375 VA.
Input voltage: 12 VDC.
Output voltage range: 210-245 VAC.
- **N-BER. Battery Electronic Regulator.**
Possibility of connection to 12 or 24 VDC.
LEDs to indicate the state of charge of the battery.
Protection against:
Overcurrent.
Short-circuits.
Reversal connection of solar panels or batteries.
- **BAT2. 70 Ah Battery.**
Battery voltage: 12 V.
Battery capacity: 70 Ah.
- **N-LAM16. Halogen Lamp Module.**
Nominal voltage: 230 VAC (PH+N).
Halogen lamp.
Power: 60 W.
- **N-ES20. 12 VDC Load Module.**
Supply voltage: 12 VDC.
Two Lamps.
Two switches.

Optional modules:

- **N-REV. Variable Resistor.**
Variable resistor of 150 Ohm.
Maximum power: 500 W.
Potentiometer.
Terminals:
Three terminals to choose all resistance or variable resistance.
Fuse: 2 A.



N-ALI01



LP3



FVP96



N-SWIN



N-BER



BAT2



N-LAM16



N-ES20



N-REV

• **N-MED84. Photovoltaic Parameters Meter.**

Photovoltaic sensor with two output connections:

Electrical measurements of voltage or current.

Measurements of solar irradiation or temperature.

Module of 4 digital display in which show the main electrical parameters in photovoltaic solar energy generation:

Voltage, current or power of generated photovoltaic energy.

Voltage, current or power of the battery or the DC load consumption.

Voltage, current or power of AC generated electric energy.

Solar irradiation (W/m²) or photovoltaic panel temperature (°C).



N-MED84

• **N-EALD. Network Analyzer Unit with Computer Data Acquisition.**

ON-OFF switch.

Supply voltage: 400 VAC.

Input terminals: Input connection with the measurement point.

Output terminals: Output connection with the measurement point.

Digital outputs: Three digital outputs are used for pulses or alarms, or for combining both.

RS-485 Communication port.

Fuses: 3x10 A.

Network Analyzer Display. It shows:

Active, reactive and apparent power.

Active, reactive and apparent energies.

Lines and phase currents.

Line and phase voltages.

Frequencies.

Power Factor.



N-EALD

• All necessary cables to realize the practical exercises are included.

The complete unit includes as well:

Advanced Real-Time SCADA.

Open Control + Multicontrol + Real-Time Control.

Specialized EDIBON Control Software based on LabVIEW.

Projector and/or electronic whiteboard compatibility allows the unit to be explained and demonstrated to an entire class at one time.

Capable of doing applied research, real industrial simulation, training courses, etc.

Remote operation and control by the user and remote control for EDIBON technical support, are always included.

Totally safe, utilizing 4 safety systems (Mechanical, Electrical, Electronic & Software).

Designed and manufactured under several quality standards.

Optional ICAI software to create, edit and carry out practical exercises, tests, exams, calculations, etc.

Apart from monitoring user's knowledge and progress reached.

This unit has been designed for future expansion and integration. A common expansion is the EDIBON Scada-Net (ESN) System which enables multiple students to simultaneously operate many units in a network.

② **AEL-SAPV/CCSOF. Computer Control + Data Acquisition + Data Management Software:**

The three softwares are part of the SCADA system.

Compatible with actual Windows operating systems. Graphic and intuitive simulation of the process in screen. **Compatible with the industry standards.**

Registration and visualization of all process variables in an automatic and simultaneous way.

Flexible, open and multicontrol software, developed with actual windows graphic systems, acting simultaneously on all process parameters.

Management, processing, comparison and storage of data.

Sampling velocity up to 250 KS/s (kilo samples per second).

Calibration system for the sensors involved in the process.

It allows the registration of the alarms state and the graphic representation in real time.

Comparative analysis of the obtained data, after the process and modification of the conditions during the process.

Open software, allowing the teacher to modify texts, instructions. Teacher's and student's passwords to facilitate the teacher's control on the student, and allowing the access to different work levels.

This unit allows the 30 students of the classroom to visualize simultaneously all the results and the manipulation of the unit, during the process, by using a projector or an electronic whiteboard.



AEL-SAPV/CCSOF

③ **Cables and Accessories**, for normal operation.

④ **Manuals:**

This unit is **supplied with 8 manuals:** Required Services, Assembly and Installation, Interface and Control Software, Starting-up, Safety, Maintenance, Calibration & Practices Manuals.

*References 1 to 4 are the main items: AEL-SAPV + AEL-SAPV/CCSOF + Cables and Accessories + Manuals are included in the minimum supply for enabling normal and full operation.

EXERCISES AND PRACTICAL POSSIBILITIES TO BE DONE WITH THE MAIN ITEMS

- 1.- Wiring of photovoltaic system.
- 2.- Measurement of energy production by the photovoltaic panel.
- 3.- Finding the Maximum Power Point.
- 4.- Minimum power of the photovoltaic inverter.
- 5.- Losses of the power grid inverter.
- 6.- Control of the power grid inverter.
- 7.- Visualizing the electrical parameters of the photovoltaic panel through SCADA Control System.
- 8.- Obtaining of the solar panel's characteristic curve current-voltage.
- 9.- Measurement of solar irradiation.
- 10.-Testing of open-circuit photovoltaic panel and measurement of the output voltage.
- 11.-Testing of short-circuit photovoltaic panel and measurement of the current.
- 12.-Testing of photovoltaic panel in overload and measurement of the voltage.
- 13.-DC photovoltaic stand-alone installation and study of the electric loads consumption.
- 14.-AC photovoltaic stand-alone installation and study of the electric loads consumption.
- 15.-Study of the influence of photovoltaic panel inclination angle.
- 16.-Study of the influence of solar radiation in energy production.
- 17.-Checking and study of feeding from the battery.

Other possibilities to be done with this Unit:

- 18.-Many students view results simultaneously.
To view all results in real time in the classroom by means of a projector or an electronic whiteboard.
 - 19.-The Computer Control System with SCADA allows a real industrial simulation.
 - 20.-This unit is totally safe as uses mechanical, electrical and electronic, and software safety devices.
 - 21.-This unit can be used for doing applied research.
 - 22.-This unit can be used for giving training courses to Industries even to other Technical Education Institutions.
- Several other exercises can be done and designed by the user.

REQUIRED SERVICES

- Electrical supply: three-phase, 380 V/50 Hz or 208 V/60 Hz, 20 Kw.

DIMENSIONS AND WEIGHTS

AEL-SAPV:

Mobile Workbench with Modules:

-Dimensions: 1500 x 400 x 1800 mm approx.
(59.05 x 15.74 x 70.86 inches approx.)

-Weight: 80 Kg approx.
(176 pounds approx.)

Photovoltaic Panel:

-Dimensions: 730 x 510 x 1150 mm approx.
(28.74 x 20.07 x 45.27 inches approx.)

-Weight: 10 Kg approx.
(22.04 pounds approx.)

COMPLETE TECHNICAL SPECIFICATIONS (for optional items)

Additionally to the main items (1, 3, 4) described, we can offer, as optional, other items 2 and from 5 to 7. All these items try to give more possibilities for:

- a) Technical and Vocational Education configuration. (ICAI)
- b) Multipost Expansions options. (Mini ESN and ESN)

a) Technical and Vocational Education configuration

⑤ AEL-SAPV/ICAI. Interactive Computer Aided Instruction Software System.

This complete software package consists of an Instructor Software (EDIBON Classroom Manager - ECM-SOF) totally integrated with the Student Software (EDIBON Student Labsoft - ESL-SOF). Both are interconnected so that the teacher knows at any moment what is the theoretical and practical knowledge of the students.

This software is optional and can be used additionally to items (1 to 4).

- ECM-SOF. EDIBON Classroom Manager (Instructor Software).

ECM-SOF is the application that allows the Instructor to register students, manage and assign tasks for workgroups, create own content to carry out Practical Exercises, choose one of the evaluation methods to check the Student knowledge and monitor the progression related to the planned tasks for individual students, workgroups, units, etc... so the teacher can know in real time the level of understanding of any student in the classroom.

Innovative features:

- User Data Base Management.
- Administration and assignment of Workgroup, Task and Training sessions.
- Creation and Integration of Practical Exercises and Multimedia Resources.
- Custom Design of Evaluation Methods.
- Creation and assignment of Formulas & Equations.
- Equation System Solver Engine.
- Updatable Contents.
- Report generation, User Progression Monitoring and Statistics.

- ESL-SOF. EDIBON Student Labsoft (Student Software).

ESL-SOF is the application addressed to the Students that helps them to understand theoretical concepts by means of practical exercises and to prove their knowledge and progression by performing tests and calculations in addition to Multimedia Resources. Default planned tasks and an Open workgroup are provided by EDIBON to allow the students start working from the first session. Reports and statistics are available to know their progression at any time, as well as explanations for every exercise to reinforce the theoretically acquired technical knowledge.

Innovative features:

- Student Log-In & Self-Registration.
- Existing Tasks checking & Monitoring.
- Default contents & scheduled tasks available to be used from the first session.
- Practical Exercises accomplishment by following the Manual provided by EDIBON.
- Evaluation Methods to prove your knowledge and progression.
- Test self-correction.
- Calculations computing and plotting.
- Equation System Solver Engine.
- User Monitoring Learning & Printable Reports.
- Multimedia-Supported auxiliary resources.

For more information see ICAI catalogue. Click on the following link:

www.edibon.com/en/files/expansion/ICAI/catalog

Instructor Software



ECM-SOF. EDIBON Classroom Manager (Instructor Software) Application Main Screen

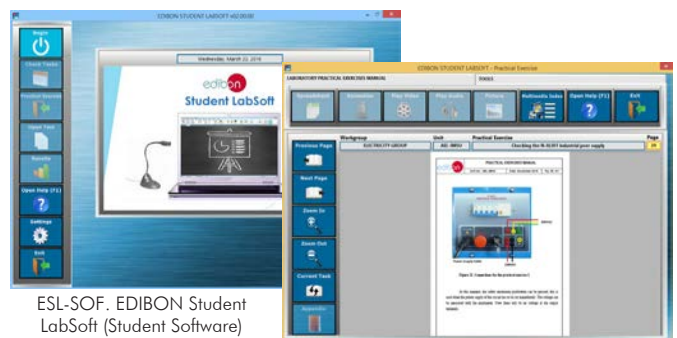
ECAL. EDIBON Calculations Program Package - Formula Editor Screen



ERS. EDIBON Results & Statistics Program Package - Student Scores Histogram

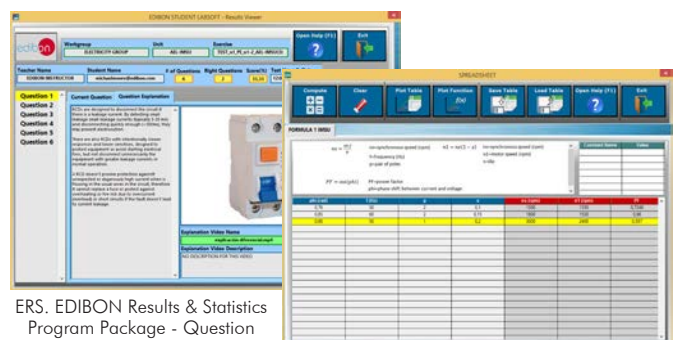
ETTE. EDIBON Training Test & Exam Program Package - Main Screen with Numeric Result Question

Student Software



ESL-SOF. EDIBON Student LabSoft (Student Software) Application Main Screen

EPE. EDIBON Practical Exercise Program Package Main Screen



ERS. EDIBON Results & Statistics Program Package - Question Explanation

ECAL. EDIBON Calculations Program Package Main Screen

b) Multipost Expansions options

⑥ **Mini ESN. EDIBON Mini Scada-Net System.**

Mini ESN. EDIBON Mini Scada-Net System allows up to 30 students to work with a Teaching Unit in any laboratory, simultaneously. It is useful for both, Higher Education and/or Technical and Vocational Education.

The Mini ESN system consists of the adaptation of any EDIBON Computer Controlled Unit with SCADA integrated in a local network.

This system allows to view/control the unit remotely, from any computer integrated in the local net (in the classroom), through the main computer connected to the unit. Then, the number of possible users who can work with the same unit is higher than in an usual way of working (usually only one).

Main characteristics:

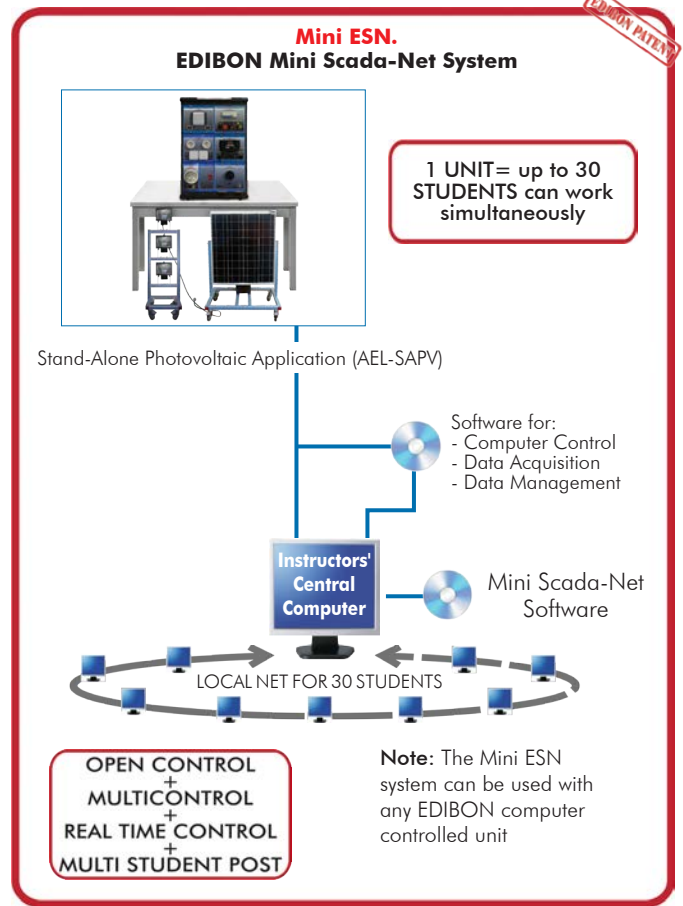
- It allows up to 30 students to work simultaneously with the EDIBON Computer Controlled Unit with SCADA, connected in a local net.
- Open Control + Multicontrol + Real Time Control + Multi Student Post.
- Instructor controls and explains to all students at the same time.
- Any user/student can work doing "real time" control/multicontrol and visualisation.
- Instructor can see in the computer what any user/student is doing in the unit.
- Continuous communication between the instructor and all the users/students connected.

Main advantages:

- It allows an easier and quicker understanding.
- This system allows you can save time and cost.
- Future expansions with more EDIBON Units.

For more information see Mini ESN catalogue. Click on the following link:

www.edibon.com/products/catalogues/en/Mini-ESN.pdf



⑦ **ESN. EDIBON Scada-Net System.**

This unit can be integrated, in the future, into a Complete Laboratory with many Units and many Students.

ORDER INFORMATION

Main items (always included in the supply)

Minimum supply always includes:

- ① **Unit: AEL-SAPV. Stand-Alone Photovoltaic Application.**
- ③ **Cables and Accessories**, for normal operation.
- ④ **Manuals.**

*IMPORTANT: Under AEL-SAPV we always supply all the elements for immediate running as 1, 3 and 4.

Optional items (supplied under specific order)

- ② AEL-SAPV/CCSOF. Computer Control + Data Acquisition + Data Management Software.
 - a) Technical and Vocational Education configuration
- ⑤ AEL-SAPV/ICAL. Interactive Computer Aided Instruction Software System.
 - b) Multipost Expansions options
- ⑥ Mini ESN. EDIBON Mini Scada-Net System.
- ⑦ ESN. EDIBON Scada-Net System.

① **AEL-SAPV. Unit:**

The application includes the following modules:

- **N-ALI01. Industrial Main Power Supply.**

Supply voltage: 400 VAC, 3PH+N+G.

ON-OFF removable key.

Output voltage connections:

Three-Phase + Neutral: 400 VAC.

Single-Phase: 230 VAC.

Three-Phase supply hose with IP44 3PN+E 32A 400V connecting plug.

Differential magnetothermal, 4 poles, 25A, 300mA AC 6KA.

- **LP3. 3 Lamps Panel.**

Power: 3 x 250 W.

Switch ON/OFF.

Intensity Regulator.

Aluminium frame.

- **FVP96. 96W Photovoltaic Panel.**

Maximum Power: 96 W.

Voltage at maximum power: 17,8 V.

Current at maximum power: 3,7 A.

Short-Circuit Current: 4,05 A.

Opened-Circuit Voltage: 22,25 V.

- **N-SWIN. Sine Wave Inverter.**

Nominal power: 375 VA.

Input voltage: 12 VDC.

Output voltage range: 210-245 VAC.

- **N-BER. Battery Electronic Regulator.**

Possibility of connection to 12 or 24 VDC.

LEDs to indicate the state of charge of the battery.

Protection against:

Overcurrent.

Short-circuits.

Reversal connection of solar panels or batteries.

- **BAT2. 70 Ah Battery.**

Battery voltage: 12 V.

Battery capacity: 70 Ah.

- **N-LAM16. Halogen Lamp Module.**

Nominal voltage: 230 VAC (PH+N).

Halogen lamp.

Power: 60 W.

- **N-ES20. 12 VDC Load Module.**

Supply voltage: 12 VDC.

Two Lamps.

Two switches.

Optional modules:

- **N-REV. Variable Resistor.**

Variable resistor of 150 Ohm.

Maximum power: 500 W.

Potentiometer.

Terminals:

Three terminals to choose all resistance or variable resistance.

Fuse: 2 A.

- **N-MED84. Photovoltaic Parameters Meter.**

Photovoltaic sensor with two output connections:

Electrical measurements of voltage or current.

Measurements of solar irradiation or temperature.

Module of 4 digital display in which show the main electrical parameters in photovoltaic solar energy generation:

Voltage, current or power of generated photovoltaic energy.

Voltage, current or power of the battery or the DC load consumption.

Voltage, current or power of AC generated electric energy.

Solar irradiation (W/m²) or photovoltaic panel temperature (°C).

- **N-EALD. Network Analyzer Unit with Computer Data Acquisition.**

ON-OFF switch.

Supply voltage: 400 VAC.

Input terminals: Input connection with the measurement point.

Output terminals: Output connection with the measurement point.

Digital outputs: Three digital outputs are used for pulses or alarms, or for combining both.

RS-485 Communication port.

Fuses: 3x10 A.

Network Analyzer Display. It shows:

Active, reactive and apparent power.

Active, reactive and apparent energies.

Lines and phase currents.

Line and phase voltages.

Frequencies.

Power Factor.

- **All necessary cables to realize the practical exercises are included.**

The complete unit includes as well:

Advanced Real-Time SCADA.

Open Control + Multicontrol + Real-Time Control.

Specialized EDIBON Control Software based on LabVIEW.

Projector and/or electronic whiteboard compatibility allows the unit to be explained and demonstrated to an entire class at one time.

Capable of doing applied research, real industrial simulation, training courses, etc.

Remote operation and control by the user and remote control for EDIBON technical support, are always included.

Totally safe, utilizing 4 safety systems (Mechanical, Electrical, Electronic & Software).

Designed and manufactured under several quality standards.

Optional ICAI software to create, edit and carry out practical exercises, tests, exams, calculations, etc.

Apart from monitoring user's knowledge and progress reached.

This unit has been designed for future expansion and integration. A common expansion is the EDIBON Scada-Net (ESN) System which enables multiple students to simultaneously operate many units in a network.

② **AEL-SAPV/CCSOF. Computer Control + Data Acquisition+ Data Management Software:**

The three softwares are part of the SCADA system.

Compatible with the industry standards.

Flexible, open and multicontrol software, developed with actual windows graphic systems, acting simultaneously on all process parameters.

Management, processing, comparison and storage of data.

Sampling velocity up to 250 KS/s (kilo samples per second).

Calibration system for the sensors involved in the process.

It allows the registration of the alarms state and the graphic representation in real time.

Open software, allowing the teacher to modify texts, instructions. Teacher's and student's passwords to facilitate the teacher's control on the student, and

allowing the access to different work levels.

This unit allows the 30 students of the classroom to visualize simultaneously all the results and the manipulation of the unit, during the process, by using a projector or an electronic whiteboard.

③ **Cables and Accessories**, for normal operation.

④ **Manuals:**

This unit is supplied with 8 manuals: Required Services, Assembly and Installation, Interface and Control Software, Starting-up, Safety, Maintenance, Calibration & Practices Manuals.

Exercises and Practical Possibilities to be done with the Main Items

- 1.- Wiring of photovoltaic system.
- 2.- Measurement of energy production by the photovoltaic panel.
- 3.- Finding the Maximum Power Point.
- 4.- Minimum power of the photovoltaic inverter.
- 5.- Losses of the power grid inverter.
- 6.- Control of the power grid inverter.
- 7.- Visualizing the electrical parameters of the photovoltaic panel through SCADA Control System.
- 8.- Obtaining of the solar panel's characteristic curve current-voltage.
- 9.- Measurement of solar irradiation.
- 10.-Testing of open-circuit photovoltaic panel and measurement of the output voltage.
- 11.-Testing of short-circuit photovoltaic panel and measurement of the current.
- 12.-Testing of photovoltaic panel in overload and measurement of the voltage.
- 13.-DC photovoltaic stand-alone installation and study of the electric loads consumption.
- 14.-AC photovoltaic stand-alone installation and study of the electric loads consumption.
- 15.-Study of the influence of photovoltaic panel inclination angle.
- 16.-Study of the influence of solar radiation in energy production.
- 17.-Checking and study of feeding from the battery.

Other possibilities to be done with this Unit:

- 18.- Many students view results simultaneously.
To view all results in real time in the classroom by means of a projector or an electronic whiteboard.
 - 19.-The Computer Control System with SCADA allows a real industrial simulation.
 - 20.-This unit is totally safe as uses mechanical, electrical and electronic, and software safety devices.
 - 21.-This unit can be used for doing applied research.
 - 22.-This unit can be used for giving training courses to Industries even to other Technical Education Institutions.
- Several other exercises can be done and designed by the user.

TENDER SPECIFICATIONS (for optional items)

a) Technical and Vocational Education configuration

⑤ **AEL-SAPV/ICAI. Interactive Computer Aided Instruction Software System.**

This complete software package consists of an Instructor Software (EDIBON Classroom Manager - ECM-SOF) totally integrated with the Student Software (EDIBON Student Labsoft - ESL-SOF). Both are interconnected so that the teacher knows at any moment what is the theoretical and practical knowledge of the students.

- ECM-SOF. EDIBON Classroom Manager (Instructor Software).

ECM-SOF is the application that allows the Instructor to register students, manage and assign tasks for workgroups, create own content to carry out Practical Exercises, choose one of the evaluation methods to check the Student knowledge and monitor the progression related to the planned tasks for individual students, workgroups, units, etc...so the teacher can know in real time the level of understanding of any student in the classroom.

Innovative features:

- User Data Base Management.
- Administration and assignment of Workgroup, Task and Training sessions.
- Creation and Integration of Practical Exercises and Multimedia Resources.
- Custom Design of Evaluation Methods.
- Creation and assignment of Formulas & Equations.
- Equation System Solver Engine.
- Updatable Contents.
- Report generation, User Progression Monitoring and Statistics.

- ESL-SOF. EDIBON Student Labsoft (Student Software).

ESL-SOF is the application addressed to the Students that helps them to understand theoretical concepts by means of practical exercises and to prove their knowledge and progression by performing tests and calculations in addition to Multimedia Resources. Default planned tasks and an Open workgroup are provided by EDIBON to allow the students start working from the first session. Reports and statistics are available to know their progression at any time, as well as explanations for every exercise to reinforce the theoretically acquired technical knowledge.

Innovative features:

- Student Log-In & Self-Registration.
- Existing Tasks checking & Monitoring.
- Default contents & scheduled tasks available to be used from the first session.
- Practical Exercises accomplishment by following the Manual provided by EDIBON.
- Evaluation Methods to prove your knowledge and progression.
- Test self-correction.
- Calculations computing and plotting.
- Equation System Solver Engine.
- User Monitoring Learning & Printable Reports.
- Multimedia-Supported auxiliary resources.

b) Multipost Expansions options

⑥ **Mini ESN. EDIBON Mini Scada-Net System.**

EDIBON Mini Scada-Net System allows up to 30 students to work with a Teaching Unit in any laboratory, simultaneously.

The Mini ESN system consists of the adaptation of any EDIBON Computer Controlled Unit with SCADA integrated in a local network.

This system allows to view/control the unit remotely, from any computer integrated in the local net (in the classroom), through the main computer connected to the unit.

Main characteristics:

- It allows up to 30 students to work simultaneously with the EDIBON Computer Controlled Unit with SCADA, connected in a local net.
- Open Control + Multicontrol + Real Time Control + Multi Student Post.
- Instructor controls and explains to all students at the same time.
- Any user/student can work doing "real time" control/multicontrol and visualisation.
- Instructor can see in the computer what any user/student is doing in the unit.
- Continuous communication between the instructor and all the users/students connected.

Main advantages:

- It allows an easier and quicker understanding.
- This system allows you can save time and cost.
- Future expansions with more EDIBON Units.

The system basically will consist of:

This system is used with a Computer Controlled Unit.

- Instructor's computer.
- Students' computers.
- Local Network.
- Unit-Control Interface adaptation.
- Unit Software adaptation.
- Webcam.
- Mini ESN Software to control the whole system.
- Cables and accessories required for a normal operation.

* Specifications subject to change without previous notice, due to the convenience of improvement of the product.



C/ Del Agua, 14. Polígono Industrial San José de Valderas.
28918 LEGANÉS. (Madrid). ESPAÑA - SPAIN.
Tel.: 34-91-6199363 Fax: 34-91-6198647

E-mail: edibon@edibon.com Web: www.edibon.com

Edition: ED01/17
Date: May/2017

REPRESENTATIVE: