



① Unit: AEL-CTFP. Current Transformer Fundamentals for Protection Devices

Key features:

- **Advanced Real-Time SCADA.**
- **Open Control + Multicontrol + Real-Time Control.**
- **Specialized EDIBON Control Software based on LabVIEW.**
- **National Instruments Data Acquisition board (250 KS/s, kilo samples per second).**
- **Projector and/or electronic whiteboard compatibility allows the unit to be explained and demonstrated to an entire class at one time.**
- **Capable of doing applied research, real industrial simulation, training courses, etc.**
- **Remote operation and control by the user and remote control for EDIBON technical support, are always included.**
- **Totally safe, utilizing 4 safety systems (Mechanical, Electrical, Electronic & Software).**
- **Designed and manufactured under several quality standards.**
- **Optional ICAI software to create, edit and carry out practical exercises, tests, exams, calculations, etc.**  
**Apart from monitoring user's knowledge and progress reached.**
- **This unit has been designed for future expansion and integration. A common expansion is the EDIBON Scada-Net (ESN) System which enables multiple students to simultaneously operate many units in a network.**

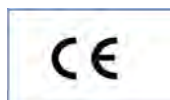


[www.edibon.com](http://www.edibon.com)  
 ↳ PRODUCTS  
 ↳ 40.- ELECTRICITY

For more information about Key Features, click here



ISO 9001: Quality Management (for Design, Manufacturing, Commercialization and After-sales service)



European Union Certificate (total safety)



Certificates ISO 14001 and ECO-Management and Audit Scheme (environmental management)



Certificate and Worlddidac Member

## INTRODUCTION

Transformers are electrical machines widely used in different applications with several purposes. Basically, there are two types of transformers: power transformers and instrument transformers. Within instrument transformers, there are two types: voltage instrument transformer and current instrument transformer. A current transformer (CT) is an electric device that produces an alternating current (AC) in its secondary which is proportional to the AC in its primary. Current transformers, together with voltage transformers (VTs) or potential transformers (Pts), which are designed for measurement, are known as instrumentation transformers.

When a current is too high to measure directly, a current transformer can be used to provide an isolated lower current in its secondary which is proportional to the current in the primary circuit. The induced secondary current is then suitable for measuring instruments or processing in electronic equipment. Current transformers are used in electronic equipment and are widely used for metering and protective relays in the electrical power industry.

## GENERAL DESCRIPTION

The AEL-CTFP Current Transformer Fundamentals for Protections Devices has been designed by Edibon to demonstrate the students which the main functions of current transformers are and which the parameters that must be considered in order to choose the adequate current transformer are.

This trainer allows the students to check the transformation ratio and how it changes if the load varies. With this trainer, the student will study the zero residual current, the rated overcurrent factor, how change the current ratio error in function of the load and how work the current transformers.

The AEL-CTFP consists of a series of modules in order to carry out all exercises and practical possibilities related to current instrument transformers. These modules are, for instance, the three-phase AC variable power supply, the network analyzer, the digital multimeter, the overcurrent time electronic relay, the variable resistor and the three-phase current transformer modules.

The AEL-CTFP includes the following modules:

- N-TRTC. Three-Phase Current Transformer.
- N-TRBC. Three-Phase Balancing transformer.
- N-REV/CT. Variable Resistor for Current Transformer.

Required modules:

- N-VPS01. AC 3PH Variable Power Supply.
- N-EALD. Network Analyzer Unit with Computer Data Acquisition (2 units).
- N-MED65. Digital Multimeter.
- N-REVT/1K. 1 kW Three-Phase Resistors Module.
- N-CON02. 3-Pole Contactor.
- N-REL09. Time Electronic Relay against Overcurrents (1.2 - 7 A).

Optional SCADA software:

- AEL-CTFP/CCSOF. Computer Control + Data Acquisition + Data Management Software.

Optional learning software:

In addition, Edibon provides optional software (AEL-CTFP/ICAI) to reinforce knowledge about this field. This software is formed by:

- ECM-SOF. EDIBON Classroom Manager (Instructor Software).
- ESL-SOF. EDIBON Student Labsoft (Student Software).

The application AEL-CTFP can be mounted on rack (option A) or on rail (option B):

Option A:

This application needs the following racks:

- N-RACK-A.
- N-RACK-B.

Optionally the AEL-WBR. Electrical Workbench (Rack) can be supplied to place the rack/s.

Option B:

This application can be mounted on rail.

Optionally the AEL-WBC. Electrical Workbench (Rail) can be supplied to mount the modules.

Optionally this unit is supplied with the EDIBON Computer Control System (SCADA), and includes: The unit itself + Computer Control, Data Acquisition and Data Management Software Packages, for controlling the process and all parameters involved in the process.

With this unit there are several options and possibilities:

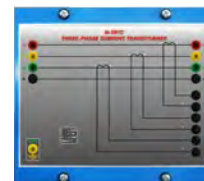
- Main items: 1, 3 and 4.
- Optional items: 2, 5, 6 and 7.

Let us describe first the main items (1 to 4):

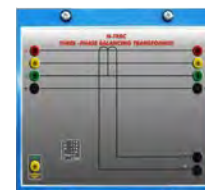
① **AEL-CTFP Unit.**

The trainer includes the following modules:

- **N-TRTC. Three-Phase Current Transformer.**  
 Input current: 2,5 A.  
 Output current: 1 A.  
 Nominal Power: 1 VA.
- **N-TRBC. Three-Phase Balancing transformer:**  
 Input current: 1 A.  
 Output current: 1A.  
 Nominal Power: 5 VA.
- **N-REV/CT. Variable Resistor for Current Transformer:**  
 Rheostat: 0...10 ohm (smoothly variable).  
 Nominal Power: 4 W.  
 Inputs/Outputs: 4mm safety sockets.



N-TRTC



N-TRBC



N-REV/CT

Required modules:

- **N-VPS01. AC 3PH Variable Power Supply.**  
 ON-OFF removable key.  
 Input Voltage: : 400 VAC, 3PH+N.  
 Output Voltage:  
 0...450 VAC.  
 0...240 VDC.  
 Frequency: 50/60 Hz.  
 Wheel to regulate the voltage.  
 Three lamps.  
 Measurement commutators:  
 One commutator to measure the voltage  
 6 positions: L1-N ; L2-N ; L3-N ; L1-L2 ; L1-L3 ; L2-L3  
 One commutator to measure the current  
 3 positions: L1, L2, L3.  
 Three-Phase supply hose with IP44 3PN+E 32A 400V connecting plug.  
 Differential magnetothermal, 4 poles, 25A, 300mA AC 6KA.
- **N-EALD. Network Analyzer Unit with Computer Data Acquisition. (2 units).**  
 ON-OFF switch.  
 Supply voltage: 400 VAC.  
 Input terminals: Input connection with the measurement point.  
 Output terminals: Output connection with the measurement point.  
 Digital outputs: Three digital outputs are used for pulses or alarms, or for combining both.  
 RS-485 Communication port.  
 Fuses: 3x10 A.  
 Network Analyzer Display. It shows:  
 Active, reactive and apparent power.  
 Active, reactive and apparent energies.  
 Lines and phase currents.  
 Line and phase voltages.  
 Frequencies.  
 Power Factor.



N-VPS01



N-EALD

- **N-MED65. Digital Multimeter.**  
 This module has a digital multimeter of about 3 ½ digits, with double-jack ending cables of about 4 mm to facilitate interconnections.  
 With this digital multimeter we will be able to measure:  
 Voltage.  
 Current.  
 Resistance.  
 Capacitors capacity.  
 Temperature.



N-MED65

- **N-REVT/1K. 1kW Three-Phase Resistors Module.**

Parallel, series, star and delta connection.

Resistance: 3 x 750 Ohm.

Current: 3 x 2 A.



N-REVT/1K

- **N-CON02. 3-Pole Contactor.**

The technical specifications of the N-CON02 are:

Supply Voltage Coil: 240 VAC.

Power terminals:

3 input power terminals.

3 output power terminals.

Auxiliary contacts:

3 normally open contacts (black).

3 normally closed contacts (red).



N-CON02

- **N-REL09. Time Electronic Relay against Overcurrents (1.2 - 7 A).**

Electronic thermal relay.

Overload protection.

Range 1.2 - 7 A.

Reset and test function.

1 NONC contact.

Temporization.



N-REL09

- **All necessary cables to realize the practical exercises are included.**

The complete unit includes as well:

**Advanced Real-Time SCADA.**

**Open Control + Multicontrol + Real-Time Control.**

**Specialized EDIBON Control Software based on LabVIEW.**

**National Instruments Data Acquisition board (250 KS/s, kilo samples per second).**

**Projector and/or electronic whiteboard compatibility allows the unit to be explained and demonstrated to an entire class at one time.**

**Capable of doing applied research, real industrial simulation, training courses, etc.**

**Remote operation and control by the user and remote control for EDIBON technical support, are always included.**

**Totally safe, utilizing 4 safety systems (Mechanical, Electrical, Electronic & Software).**

**Designed and manufactured under several quality standards.**

**Optional ICAI software to create, edit and carry out practical exercises, tests, exams, calculations, etc.**

**Apart from monitoring user's knowledge and progress reached.**

**This unit has been designed for future expansion and integration. A common expansion is the EDIBON Scada-Net (ESN) System which enables multiple students to simultaneously operate many units in a network.**

**② AEL-CTFP/CCSOF. Computer Control + Data Acquisition + Data Management Software:**

The three softwares are part of the SCADA system.

Compatible with actual Windows operating systems. Graphic and intuitive simulation of the process in screen. Compatible with the industry standards.

Registration and visualization of all process variables in an automatic and simultaneous way.

Flexible, open and multicontrol software, developed with actual windows graphic systems, acting simultaneously on all process parameters.

Management, processing, comparison and storage of data.

Sampling velocity up to **250 KS/s (kilo samples per second)**.

It allows the registration of the alarms state and the graphic representation in real time.

Comparative analysis of the obtained data, after the process and modification of the conditions during the process.

Open software, allowing the teacher to modify texts, instructions. Teacher's and student's passwords to facilitate the teacher's control on the student, and allowing the access to different work levels.

This unit allows the 30 students of the classroom to visualize simultaneously all the results and the manipulation of the unit, during the process, by using a projector or an electronic whiteboard.

**③ Cables and Accessories**, for normal operation.

**④ Manuals:**

This unit is **supplied with 7 manuals**: Required Services, Assembly and Installation, Interface and Control Software, Starting-up, Safety, Maintenance & Practices Manuals.

\*References 1 to 4 are the main items: AEL-CTFP + AEL-CTFP/CCSOF + Cables and Accessories + Manuals are included in the minimum supply for enabling normal and full operation.



AEL-CTFP/CCSOF

## EXERCISES AND PRACTICAL POSSIBILITIES TO BE DONE WITH THE MAIN ITEMS

- 1.-Analyzing the secondary current transformer as a function of the primary current.
- 2.-Checking the effect of the load on current ratio error.
- 3.-Checking rated overcurrent factor.
- 4.-Analyzing the transformer circuit in three-wire system.
- 5.-Analyzing the transformer in four-wire system.
- 6.-Determination of zero residual current.
- 7.-Many students view results simultaneously.  
To view all results in real time in the classroom by means of a projector or an electronic whiteboard.
- 8.-The Computer Control System with SCADA allows a real industrial simulation.
- 9.-This unit is totally safe as uses mechanical, electrical and electronic, and software safety devices.
- 10.-This unit can be used for doing applied research.
- 11.-This unit can be used for giving training courses to Industries even to other Technical Education Institutions.
- Several other exercises can be done and designed by the user.

Other possibilities to be done with this Unit:

- 7.-Many students view results simultaneously.

To view all results in real time in the classroom by means of a projector or an electronic whiteboard.

## REQUIRED SERVICES

- Electrical supply: three-phase, 380V./50 Hz. or 208V./60 Hz., 20 Kw.
- Computer.

## DIMENSIONS AND WEIGHTS

AEL-CTFP:

- Dimensions: 1600 x 550 x 2000 mm. approx.  
(62.99 x 21.65 x 78.74 inches approx.)
- Weight: 60 Kg. approx.  
(132 pounds approx.)

## AVAILABLE VERSIONS

Offered in this catalogue:

- AEL-CTFP. Current Transformer Fundaments for Protections Devices.

Offered in other catalogue:

- AEL-VTFP. Voltage Transformer Fundaments for Protections Devices.



Additionally to the main items (1, 3, 4) described, we can offer, as optional, other items 2 and from 5 to 7.

All these items try to give more possibilities for:

- a) Technical and Vocational Education configuration. (ICAI)
- b) Multipost Expansions options. (Mini ESN and ESN)

a) Technical and Vocational Education configuration

**5 AEL-CTFP/ICAI. Interactive Computer Aided Instruction Software System.**

This complete software package consists of an Instructor Software (EDIBON Classroom Manager -ECM-SOF) totally integrated with the Student Software (EDIBON Student Labsoft -ESL-SOF). Both are interconnected so that the teacher knows at any moment what is the theoretical and practical knowledge of the students.

This software is optional and can be used additionally to items (1 to 4).

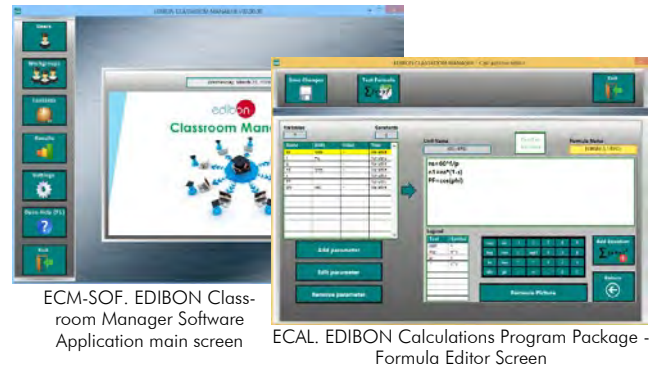
**-ECM-SOF. EDIBON Classroom Manager (Instructor Software).**

ECM-SOF is the application that allows the Instructor to register students, manage and assign tasks for workgroups, create own content to carry out Practical Exercises, choose one of the evaluation methods to check the Student knowledge and monitor the progression related to the planned tasks for individual students, workgroups, units, etc... so the teacher can know in real time the level of understanding of any student in the classroom.

Innovative features:

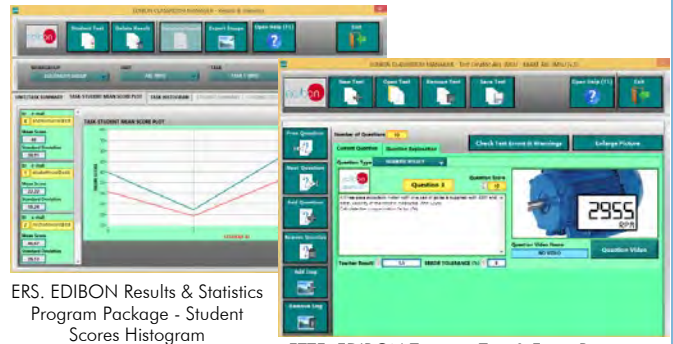
- User Data Base Management.**
- Administration and assignment of Workgroups, Tasks and Training sessions.**
- Creation and Integration of Practical Exercises and Multimedia Resources.**
- Custom Design of Evaluation Methods.**
- Creation and assignment of Formulas & Equations.**
- Equation System Solver Engine.**
- Updatable Contents.**
- Report generation, User Progression Monitoring and Statistics.**

Instructor Software



ECM-SOF. EDIBON Classroom Manager Software Application main screen

ECAL. EDIBON Calculations Program Package - Formula Editor Screen



ERS. EDIBON Results & Statistics Program Package - Student Scores Histogram

ETTE. EDIBON Training Test & Exam Program Package - Main Screen with Numeric Result Question

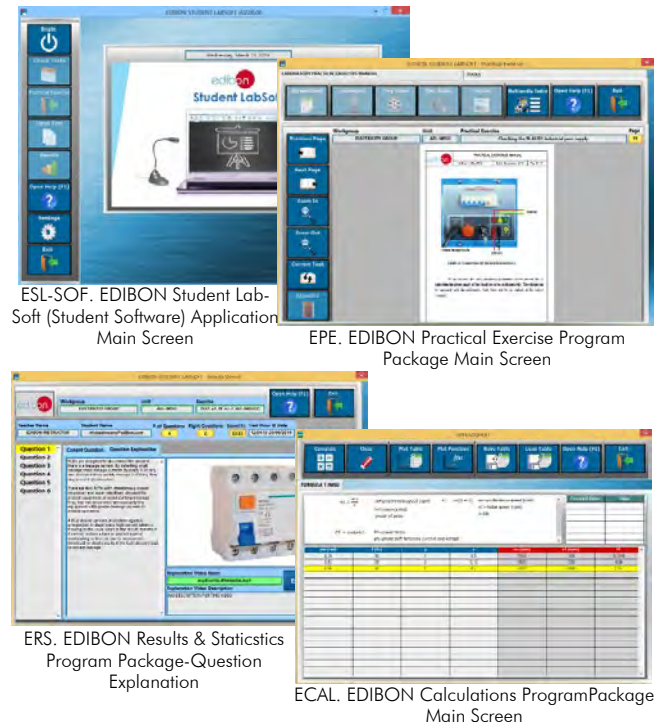
**-ESL-SOF. EDIBON Student Labsoft (Student Software).**

ESL-SOF is the application addressed to the Students that helps them to understand theoretical concepts by means of practical exercises and to prove their knowledge and progression by performing tests and calculations in addition to Multimedia Resources. Default planned tasks and an Open workgroup are provided by EDIBON to allow the students start working from the first session. Reports and statistics are available to know their progression at any time, as well as explanations for every exercise to reinforce the theoretically acquired technical knowledge.

Innovative features:

- Student Log-In & Self-Registration.**
- Existing Tasks checking & Monitoring.**
- Default contents & scheduled tasks available to be used from the first session.**
- Practical Exercises accomplishment by following the Manual provided by EDIBON.**
- Evaluation Methods to prove your knowledge and progression.**
- Test self-correction.**
- Calculations computing and plotting.**
- Equation System Solver Engine.**
- User Monitoring Learning & Printable Reports.**
- Multimedia-Supported auxiliary resources.**

Student Software



ESL-SOF. EDIBON Student Labsoft (Student Software) Application Main Screen

EPE. EDIBON Practical Exercise Program Package Main Screen

ERS. EDIBON Results & Statistics Program Package-Question Explanation

ECAL. EDIBON Calculations Program Package Main Screen

For more information see ICAI catalogue. Click on the following link:

[www.edibon.com/products/catalogues/en/units/electricity/ICAI-Electricity/ICAI-Electricity.pdf](http://www.edibon.com/products/catalogues/en/units/electricity/ICAI-Electricity/ICAI-Electricity.pdf)

⑥ **Mini ESN. EDIBON Mini Scada-Net System.**

Mini ESN. EDIBON Mini Scada-Net System allows up to 30 students to work with a Teaching Unit in any laboratory, simultaneously.

It is useful for both, Higher Education and/or Technical and Vocational Education.

The Mini ESN system consists of the adaptation of any EDIBON computer controlled unit with SCADA integrated in a local network.

This system allows to view/control the unit remotely, from any computer integrated in the local net (in the classroom), through the main computer connected to the unit. Then, the number of possible users who can work with the same unit is higher than in an usual way of working (usually only one).

Main characteristics:

- It allows up to 30 students to work simultaneously with the EDIBON Computer Controlled Unit with SCADA, connected in a local net.
- Open Control + Multicontrol + Real Time Control + Multi Student Post.
- Instructor controls and explains to all students at the same time.
- Any user/student can work doing "real time" control/multicontrol and visualisation.
- Instructor can see in the computer what any user/student is doing in the unit.
- Continuous communication between the instructor and all the users/students connected.

Main advantages:

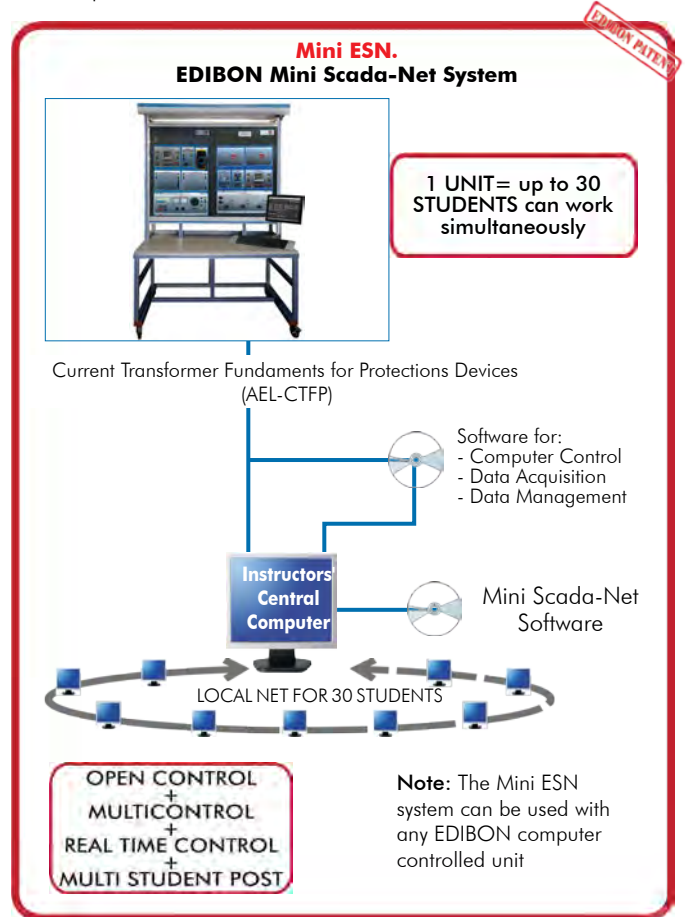
- It allows an easier and quicker understanding.
- This system allows you can save time and cost.
- Future expansions with more EDIBON Units.

For more information see Mini ESN catalogue. Click on the following link:

[www.edibon.com/products/catalogues/en/Mini-ESN.pdf](http://www.edibon.com/products/catalogues/en/Mini-ESN.pdf)

⑦ **ESN. EDIBON Scada-Net System.**

This unit can be integrated, in the future, into a Complete Laboratory with many Units and many Students.



## ORDER INFORMATION

### **Main items** (always included in the supply)

Minimum supply always includes:

- ① **AEL-CTFP. Current Transformer Fundamentals for Protections Devices.**
- ② **AEL-CTFP/CCSOF. Computer Control + Data Acquisition + Data Management Software.**
- ③ **Cables and Accessories**, for normal operation.
- ④ **Manuals.**

\*IMPORTANT: Under AEL-CTFP we always supply all the elements for immediate running as 1, 2, 3 and 4.

### **Optional items** (supplied under specific order)

a) Technical and Vocational configuration

- ⑤ AEL-CTFP/ICAI. Interactive Computer Aided Instruction Software System.

b) Multipost Expansions options

- ⑥ Mini ESN. EDIBON Mini Scada-Net System.
- ⑦ ESN. EDIBON Scada-Net System.



**① AEL-CTFP Unit.**

The trainer includes the following modules:

- N-TRTC. Three-Phase Current Transformer.  
Input current: 2,5 A.  
Output current: 1 A.  
Nominal Power: 1 VA.
- N-TRBC. Three-Phase Balancing transformer:  
Input current: 1 A.  
Output current: 1A.  
Nominal Power: 5 VA.
- N-REV/CT. Variable Resistor for Current Transformer:  
Rheostat: 0...10 ohm (smoothly variable).  
Nominal Power: 4 W.  
Inputs/Outputs: 4mm safety sockets.

Required modules:

- N-VPS01. AC 3PH Variable Power Supply.  
ON-OFF removable key.  
Input Voltage: : 400 VAC, 3PH+N.  
Output Voltage:  
0...450 VAC.  
0...240 VDC.  
Frequency: 50/60 Hz.  
Wheel to regulate the voltage.  
Three lamps.  
Measurement commutators:  
One commutator to measure the voltage  
6 positions: L1-N ; L2-N ; L3-N ; L1-L2 ; L1-L3 ; L2-L3  
One commutator to measure the current  
3 positions: L1, L2, L3.  
Three-Phase supply hose with IP44 3PN+E 32A 400V connecting plug.  
Differential magnetothermal, 4 poles, 25A, 300mA AC 6KA.
- N-EALD. Network Analyzer Unit with Computer Data Acquisition. (2 units).  
ON-OFF switch.  
Supply voltage: 400 VAC.  
Input terminals: Input connection with the measurement point.  
Output terminals: Output connection with the measurement point.  
Digital outputs: Three digital outputs are used for pulses or alarms, or for combining both.  
RS-485 Communication port.  
Fuses: 3x10 A.  
Network Analyzer Display. It shows:  
Active, reactive and apparent power.  
Active, reactive and apparent energies.  
Lines and phase currents.  
Line and phase voltages.  
Frequencies.  
Power Factor.
- N-MED65. Digital Multimeter.  
This module has a digital multimeter of about 3 ½ digits, with double-jack ending cables of about 4 mm to facilitate interconnections.  
With this digital multimeter we will be able to measure:  
Voltage.  
Current.  
Resistance.  
Capacitors capacity.  
Temperature.
- N-REVT/1K. 1kW Three-Phase Resistors Module.  
Parallel, series, star and delta connection.  
Resistance: 3 x 750 Ohm.  
Current: 3 x 2 A.
- N-CON02. 3-Pole Contactor.  
The technical specifications of the N-CON02 are:  
Supply Voltage Coil: 240 VAC.  
Power terminals:  
3 input power terminals.  
3 output power terminals.  
Auxiliary contacts:  
3 normally open contacts (black).  
3 normally closed contacts (red).
- N-RELO9. Time Electronic Relay against Overcurrents (1.2 - 7 A).  
Electronic thermal relay.  
Overload protection.  
Range 1.2 - 7 A.  
Reset and test function.  
1 NONC contact.  
Temporization.
- All necessary cables to realize the practical exercises are included.

The complete unit includes as well:

Advanced Real-Time SCADA.

Open Control + Multicontrol + Real-Time Control.

Specialized EDIBON Control Software based on LabVIEW.

National Instruments Data Acquisition board (250 KS/s, kilo samples per second).

Projector and/or electronic whiteboard compatibility allows the unit to be explained and demonstrated to an entire class at one time.

Capable of doing applied research, real industrial simulation, training courses, etc.

Remote operation and control by the user and remote control for EDIBON technical support, are always included.

Totally safe, utilizing 4 safety systems (Mechanical, Electrical, Electronic & Software).

Designed and manufactured under several quality standards.

Optional ICAI software to create, edit and carry out practical exercises, tests, exams, calculations, etc.

Apart from monitoring user's knowledge and progress reached.

This unit has been designed for future expansion and integration. A common expansion is the EDIBON Scada-Net (ESN) System which enables multiple students to simultaneously operate many units in a network.

**② AEL-CTFP/CSOF. Computer Control +Data Acquisition+Data Management Software:**

The three softwares are part of the SCADA system.

Compatible with the industry standards.

Flexible, open and multicontrol software, developed with actual windows graphic systems, acting simultaneously on all process parameters.

Management, processing, comparison and storage of data.

Sampling velocity up to 250 KS/s (kilo samples per second).

It allows the registration of the alarms state and the graphic representation in real time.

Open software, allowing the teacher to modify texts, instructions. Teacher's and student's passwords to facilitate the teacher's control on the student, and allowing the access to different work levels.

This unit allows the 30 students of the classroom to visualize simultaneously all the results and the manipulation of the unit, during the process, by using a projector or an electronic whiteboard.

**③ Cables and Accessories**, for normal operation.

**④ Manuals:**

This unit is supplied with 7 manuals: Required Services, Assembly and Installation, Control Software, Starting-up, Safety, Maintenance & Practices Manuals.

**Exercises and Practical Possibilities to be done with the Main Items**

- 1.- Analyzing the secondary current transformer as a function of the primary current.
  - 2.- Checking the effect of the load on current ratio error.
  - 3.- Checking rated overcurrent factor.
  - 4.- Analyzing the transformer circuit in three-wire system.
  - 5.- Analyzing the transformer in four-wire system.
  - 6.- Determination of zero residual current.
- Other possibilities to be done with this Unit:
- 7.- Many students view results simultaneously.  
To view all results in real time in the classroom by means of a projector or an electronic whiteboard.
  - 8.- The Computer Control System with SCADA allows a real industrial simulation.
  - 9.- This unit is totally safe as uses mechanical, electrical and electronic, and software safety devices.
  - 10.- This unit can be used for doing applied research.
  - 11.- This unit can be used for giving training courses to Industries even to other Technical Education Institutions.
- Several other exercises can be done and designed by the user.

a) Technical and Vocational Education configuration

**⑤ AEL-CTFP/ICAI. Interactive Computer Aided Instruction Software System.**

This complete software package consists of an Instructor Software (EDIBON Classroom Manager -ECM-SOF) totally integrated with the Student Software (EDIBON Student Labsoft -ESL-SOF). Both are interconnected so that the teacher knows at any moment what is the theoretical and practical knowledge of the students.

-ECM-SOF. EDIBON Classroom Manager (Instructor Software).

ECM-SOF is the application that allows the Instructor to register students, manage and assign tasks for workgroups, create own content to carry out Practical Exercises, choose one of the evaluation methods to check the Student knowledge and monitor the progression related to the planned tasks for individual students, workgroups, units, etc...so the teacher can know in real time the level of understanding of any student in the classroom.

Innovative features:

- User Data Base Management.
- Administration and assignment of Workgroup, Task and Training sessions.
- Creation and Integration of Practical Exercises and Multimedia Resources.
- Custom Design of Evaluation Methods.
- Creation and assignment of Formulas & Equations.
- Equation System Solver Engine.
- Updatable Contents.
- Report generation, User Progression Monitoring and Statistics.

-ESL-SOF. EDIBON Student Labsoft (Student Software).

ESL-SOF is the application addressed to the Students that helps them to understand theoretical concepts by means of practical exercises and to prove their knowledge and progression by performing tests and calculations in addition to Multimedia Resources. Default planned tasks and an Open workgroup are provided by EDIBON to allow the students start working from the first session. Reports and statistics are available to know their progression at any time, as well as explanations for every exercise to reinforce the theoretically acquired technical knowledge.

Innovative features:

- Student Log-In & Self-Registration.
- Existing Tasks checking & Monitoring.
- Default contents & scheduled tasks available to be used from the first session.
- Practical Exercises accomplishment by following the Manual provided by EDIBON.
- Evaluation Methods to prove your knowledge and progression.
- Test self-correction.
- Calculations computing and plotting.
- Equation System Solver Engine.
- User Monitoring Learning & Printable Reports.
- Multimedia-Supported auxiliary resources.

b) Multipost Expansions options

**⑥ Mini ESN. EDIBON Mini Scada-Net System.**

EDIBON Mini Scada-Net System allows up to 30 students to work with a Teaching Unit in any laboratory, simultaneously.

The Mini ESN system consists of the adaptation of any EDIBON Computer Controlled Unit with SCADA integrated in a local network.

This system allows to view/control the unit remotely, from any computer integrated in the local net (in the classroom), through the main computer connected to the unit.

Main characteristics:

- It allows up to 30 students to work simultaneously with the EDIBON Computer Controlled Unit with SCADA, connected in a local net.
- Open Control + Multicontrol + Real Time Control + Multi Student Post.
- Instructor controls and explains to all students at the same time.
- Any user/student can work doing "real time" control/multicontrol and visualisation.
- Instructor can see in the computer what any user/student is doing in the unit.
- Continuous communication between the instructor and all the users/students connected.

Main advantages:

- It allows an easier and quicker understanding.
- This system allows you can save time and cost.
- Future expansions with more EDIBON Units.

The system basically will consist of:

This system is used with a Computer Controlled Unit.

- Instructor's computer.
- Students' computers.
- Local Network.
- Unit-Control Interface adaptation.
- Unit Software adaptation.
- Webcam.
- Mini ESN Software to control the whole system.
- Cables and accessories required for a normal operation.

\* Specifications subject to change without previous notice, due to the convenience of improvement of the product.

REPRESENTATIVE



C/ Del Agua, 14. Polígono Industrial San José de Valderas.  
28918 LEGANÉS. (Madrid). SPAIN.  
Phone: 34-91-6199363 FAX: 34-91-6198647  
E-mail: edibon@edibon.com WEB site: **www.edibon.com**

Edition: ED01/17  
Date: January/2017

