



www.edibon.com
 ↳ PRODUCTS
 ↳ 40.- ELECTRICITY

INTRODUCTION

KNX heating control devices allow regulating and automating the temperature in a closed space. Nowadays the users in principle demand the implementation of intelligent temperature control systems because the controls automatically turn heating on and off based on settings previously input by the user to ensure maximum comfort and efficiency.

In addition, with a weather station, it is possible to measure different variables useful in establishing energy efficiency actions and control strategies. Knowing precisely the outside temperature, if it is day or night, automatic summer/winter adaption, if it's raining, wind speed, solar azimuth and the level of external brightness is very useful for efficient programming.



ISO 9001: Quality Management (for Design, Manufacturing, Commercialization and After-sales service)



European Union Certificate (total safety)



Certificates ISO 14001 and ECO-Management and Audit Scheme (environmental management)



Certificate and Worlddidac Member

GENERAL DESCRIPTION

The KNX/EIB Heating Control Application, "AEL-KNX2", has been designed by Edibon to show the users the most important KNX elements used in the most advanced heating control installations. Temperature control is carried out through temperature sensors and actuators that enable/disable the boiler with a constant integrated close loop control.

The purpose of the AEL-KNX2 is to give the students a complete practical and theoretical training in the installations and programming of the most important KNX elements focused in heating control systems, characteristic of sensors, actuators, study of energy consumption with these heating control systems, etc.

To take a maximum experience with the KNX/EIB Heating Control Application is very recommendable to acquire the rest of the KNX offered by Edibon: AEL-KNX1, AEL-KNX3, AEL-KNX4 and AEL-KNX5. The combination of all these applications allows the student to design a complete intelligent bus system implemented by a KNX System.

In addition, this application requires the ETS latest generation KNX software to program different scenes, import of KNX projects, setting of sensors and actuators, etc.

The AEL-KNX2 includes the following modules:

- N-KNX34. KNX/EIB USB Programming Interface Module.
- N-KNX18. KNX/EIB Power Supply Module.
- N-KNX29. KNX/EIB Temperature Sensor Module.
- N-KNX1. KNX/EIB Heating Actuator Module.

Additional and recommended modules:

- N-KNX31. KNX/EIB Valve Actuator Module.
- N-KNX30. KNX/EIB Touch Panel Module.
- N-KNX25. KNX/EIB Single Line Extending Bus Module.
- N-KNX2. KNX/EIB Additional Power Supply Module.
- N-KNX32. KNX/EIB Weather Station Module.
- N-KNX17. KNX/EIB Movement Sensor Module.

Required programming software:

- ETS. KNX Engineering Tool Software.

Additional applications:

- AEL-KNX1. KNX/EIB Shutter Control Application.
- AEL-KNX3. KNX/EIB Security Control Application.
- AEL-KNX4. KNX/EIB Lighting Control Application.
- AEL-KNX5. KNX/EIB Energy Management Application.
- AEL-BCS. Building Automation and Control Networks BacNet Application.
- AEL-DALI. DALI Installations Application.

Expansion learning software:

In addition, Edibon provides expansion learning software (AEL-KNX2/ICAI) to reinforce knowledge about this field.

This software is formed by:

- ECM-SOF. EDIBON Classroom Manager (Instructor Software).
- ESL-SOF. EDIBON Student Labsoft (Student Software).

The application AEL-KNX2 can be mounted on rack (option A) or on rail (option B):

Option A:

This application needs the following racks.

- N-RACK-M.

Optionally the AEL-WBR. Electrical Workbench (Rack) can be supplied to place the rack/s.

Option B:

This application can be mounted on rail.

Optionally the AEL-WBC. Electrical Workbench (Rail) can be supplied to mount the modules.

General Description

Configuration table:

REF	KNX MODULES	AEL-KNX1 KNX/EIB Shutter Control Application	AEL-KNX2 KNX/EIB Heating Control Application	AEL-KNX3 KNX/EIB Security Control Application	AEL-KNX4 KNX/EIB Lighting Control Application	AEL-KNX5 KNX/EIB Energy Management Application
N-KNX1	KNX/EIB Heating Actuator Module		X			
N-KNX2	KNX/EIB Additional Power Supply Module	O	O	O	O	O
N-KNX3	KNX/EIB Barrier Sensor Module			O		
N-KNX4	KNX/EIB Binary Input Module			X		O
N-KNX5	KNX/EIB Binary Output Module			X		O
N-KNX6	KNX/EIB Bolt Switch Module			O		
N-KNX7	KNX/EIB Broken Glass Module			O		
N-KNX8	KNX/EIB Dimming Actuator Module				X	X
N-KNX9	KNX/EIB Electronic Control Module					X
N-KNX10	KNX/EIB Energy Meter Module				O	X
N-KNX11	KNX/EIB Fingerprint Reader Module			O		
N-KNX12	KNX/EIB Fire/Smoke Sensor Module			O		
N-KNX13	KNX/EIB Flooding Sensor Module			O		
N-KNX14	KNX/EIB Light Sensor Module	X			X	O
N-KNX15	KNX/EIB Magnetic Card Reader Module			O		
N-KNX16	KNX/EIB Manual Switches Module				X	
N-KNX17	KNX/EIB Movement Sensor Module		O	O	O	O
N-KNX18	KNX/EIB Power Supply Module	X	X	X	X	X
N-KNX19	KNX/EIB Proximity Sensor Module			O		
N-KNX20	KNX/EIB Push-Button Module	X				
N-KNX21	KNX/EIB Room Controller Module	O				X
N-KNX22	KNX/EIB Scene Controller Module				O	
N-KNX23	KNX/EIB Shutter Motor Module	O				
N-KNX24	KNX/EIB Shutter/Blind Actuator Module	X				
N-KNX25	KNX/EIB Single Line Extending Bus Module	O	O	O	O	O
N-KNX26	KNX/EIB Siren Module			O		
N-KNX27	KNX/EIB Staircase Sensor Module				O	
N-KNX28	KNX/EIB Switch Actuator Module				X	O
N-KNX29	KNX/EIB Temperature Sensor Module		X			O
N-KNX30	KNX/EIB Touch Panel Module	O	O	O	O	O
N-KNX31	KNX/EIB Valve Actuator Module		O			
N-KNX32	KNX/EIB Weather Station Module	O	O			
N-KNX33	KNX/EIB Window/Door Contact Module			O		
N-KNX34	KNX/EIB USB Programming Interface Module	X	X	X	X	X
N-KNX35	KNX/EIB Infrared Transmitter/Receiver Module			O		
N-LAM08	2 Lamps-holders + Incandescent Lamps 40 W				X	O
N-LAM32	1 Led Lamp				X	O
ETS	KNX Engineering Tool Software	X	X	X	X	X

X = minimum recommended modules

O = optional and additional modules

SPECIFICATIONS

The application includes the following modules:

- **N-KNX34. KNX/EIB USB Programming Interface Module.**

Power supply: KNX line, 21 ...30 VDC.

Current consumption (max.): < 5 mA.

USB connection: USB2.0 connector.

- **N-KNX18. KNX/EIB Power Supply Module.**

Power supply: 230 VAC.

Maximum load: 640 mA.

Output voltage: 24 VDC.

- **N-KNX29. KNX/EIB Temperature Sensor Module.**

KNX bus voltage: 24 VDC.

Bus inputs/outputs: 2mm safety sockets.

Range measurement: 0-40 °C (approx.).

- **N-KNX1. KNX/EIB Heating Actuator Module.**

Nominal voltage: 230 VAC.

Frequency: 50 Hz.

KNX bus voltage: 24 VDC.

Mains inputs/outputs: 4 mm safety sockets.

Bus inputs/outputs: 2 mm safety sockets.

Additional and recommended modules:

- **N-KNX31. KNX/EIB Valve Actuator Module.**

KNX bus voltage: 24 VDC.

Bus inputs/outputs: 2 mm safety sockets.

Hydroelectric valve with automatic flow regulation.

- **N-KNX30. KNX/EIB Touch Panel Module.**

Nominal voltage: 230 VAC.

Frequency: 50 Hz.

KNX bus voltage: 24 VDC.

Mains inputs/outputs: 4 mm safety sockets.

Bus inputs/outputs: 2 mm safety sockets.

- **N-KNX25. KNX/EIB Single Line Extending Bus Module.**

Nominal voltage: 230 VAC.

Frequency: 50 Hz.

KNX bus voltage: 24 VDC.

Mains inputs/outputs: 4 mm safety sockets.

Bus inputs/outputs: 2 mm safety sockets.

Interconnection with other KNX/EIB systems.

- **N-KNX2. KNX/EIB Additional Power Supply Module.**

KNX bus voltage: 28 VDC.

Bus inputs/outputs: 2 mm safety sockets.

- **N-KNX32. KNX/EIB Weather Station Module.**

Nominal voltage: 230 VAC.

Frequency: 50 Hz.

KNX bus voltage: 24 VDC.

Mains inputs/outputs: 4 mm safety sockets.

Bus inputs/outputs: 2mm safety sockets.

Different configurations:

Day/night.

Winter/summer.

This module allows measure:

Outside temperature.

Wind speed.

Solar azimuth.

Level of external brightness.

- **N-KNX17. KNX/EIB Movement Sensor Module.**

Movement sensor for bus system KNX.

Max. Transmission range frontally 7 m.

Number of channels 1.

- **All necessary cables to realize the practical exercises are included.**

Cables and Accessories, for normal operation.

Manuals:

This unit is **supplied with the following manuals**: Required Services, Assembly and Installation, Starting-up, Safety, Maintenance & Practices Manuals.

EXERCISES AND PRACTICAL POSSIBILITIES

- 1.- Study of the fundamental of a KNX/EIB installation BUS.
- 2.- Programming of temperature sensor and actuators through ETS software for room temperature control.
- 3.- Study of temperature control against disturbances variables.
- 4.- Study of preparation and installation methods of a KNX/EIB project.
- 5.- Study how the instruction is transferred to adequate the temperature.
- 6.- Observe the operation of the valve against control instruction.
- 7.- Checking the heat regulation.
- 8.- Presence control for the appropriate operation of heating controller.
- 9.- Programming the touch panel according to different scenes.
- 10.- Checking all parameters in the touch panel.
- 11.- Centralized control of the main configurations in the touch panel.
- 12.- Extending a bus system through a single-line topology.
- 13.- Manual control over the main actuators.
- 14.- Study of the weather conditions control against disturbances variables.

Some practical possibilities with additional and recommended modules:

REQUIRED SERVICES

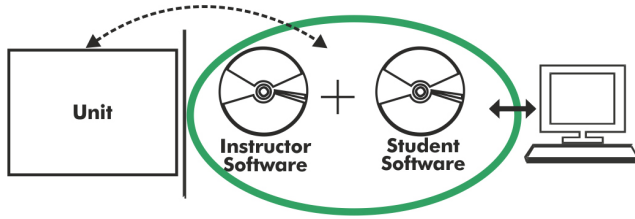
- Electrical supply: single phase, 230 V./50 Hz. or 115 V./60 Hz.

DIMENSIONS AND WEIGHTS

- AEL-KNX2:
- Dimensions: 640 x 320 x 670 mm approx.
(25.19 x 12.59 x 26.37 inches approx.)
 - Weight: 60 Kg approx.
(132 pounds approx.)

Optional

AEL-KNX2/ICAI. Interactive Computer Aided Instruction Software System:



With no physical connection between unit and computer (PC), this complete software package consists of an Instructor Software (EDIBON Classroom Manager -ECM-SOF) totally integrated with the Student Software (EDIBON Student Labsoft -ESL-SOF). Both are interconnected so that the teacher knows at any moment what is the theoretical and practical knowledge of the students.

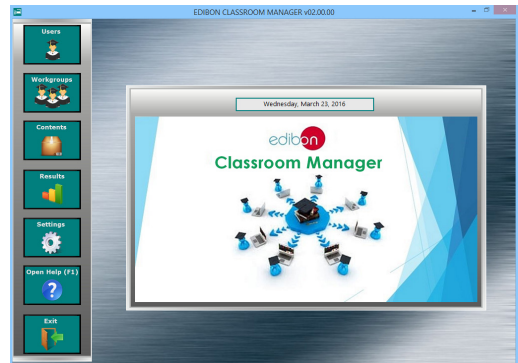
Instructor Software

- ECM-SOF. EDIBON Classroom Manager (Instructor Software).

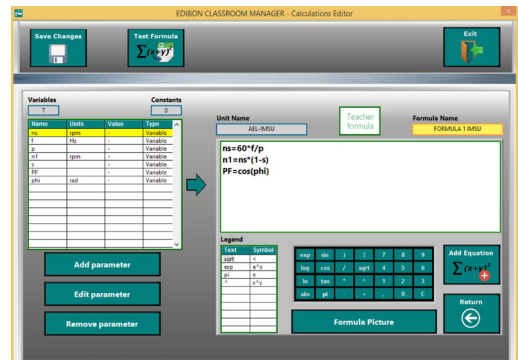
ECM-SOF is the application that allows the Instructor to register students, manage and assign tasks for workgroups, create own content to carry out Practical Exercises, choose one of the evaluation methods to check the Student knowledge and monitor the progression related to the planned tasks for individual students, workgroups, units, etc... so the teacher can know in real time the level of understanding of any student in the classroom.

Innovative features:

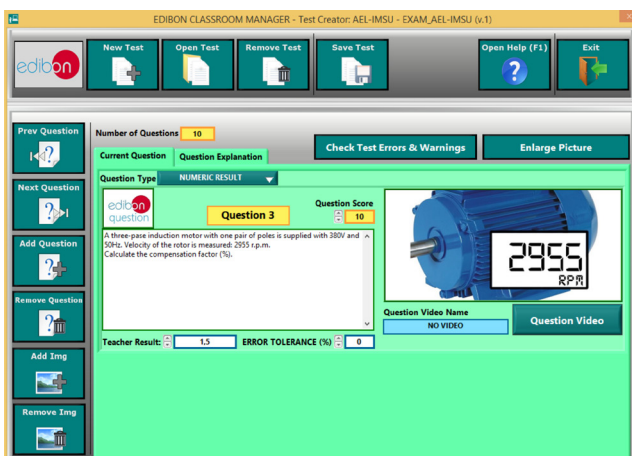
- User Data Base Management.
- Administration and assignment of Workgroup, Task and Training sessions.
- Creation and Integration of Practical Exercises and Multimedia Resources.
- Custom Design of Evaluation Methods.
- Creation and assignment of Formulas & Equations.
- Equation System Solver Engine.
- Updatable Contents.
- Report generation, User Progression Monitoring and Statistics.



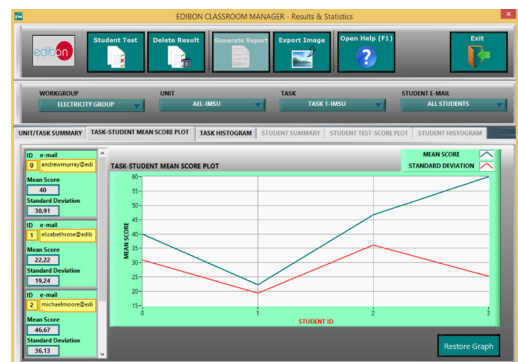
ECM-SOF. EDIBON Classroom Manager (Instructor Software) Application Main Screen



ECAL. EDIBON Calculations Program Package - Formula Editor Screen



ETTE. EDIBON Training Test & Exam Program Package - Main Screen with Numeric Result Question



ERS. EDIBON Results & Statistics Program Package - Student Scores Histogram

Optional
Student Software

- ESL-SOF. **EDIBON Student Labsoft (Student Software).**

ESL-SOF is the application addressed to the Students that helps them to understand theoretical concepts by means of practical exercises and to prove their knowledge and progression by performing tests and calculations in addition to Multimedia Resources. Default planned tasks and an Open workgroup are provided by EDIBON to allow the students start working from the first session. Reports and statistics are available to know their progression at any time, as well as explanations for every exercise to reinforce the theoretically acquired technical knowledge.

Innovative features:

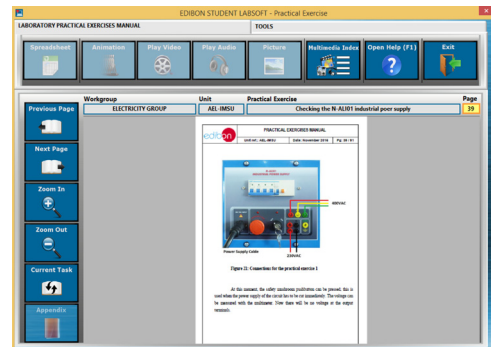
- Student Log-In & Self-Registration.
- Existing Tasks checking & Monitoring.
- Default contents & scheduled tasks available to be used from the first session.
- Practical Exercises accomplishment by following the Manual provided by EDIBON.
- Evaluation Methods to prove your knowledge and progression.
- Test self-correction.
- Calculations computing and plotting.
- Equation System Solver Engine.
- User Monitoring Learning & Printable Reports.
- Multimedia-Supported auxiliary resources.

For more information see ICAI catalogue. Click on the following link:

www.edibon.com/en/files/expansion/ICAI/catalog



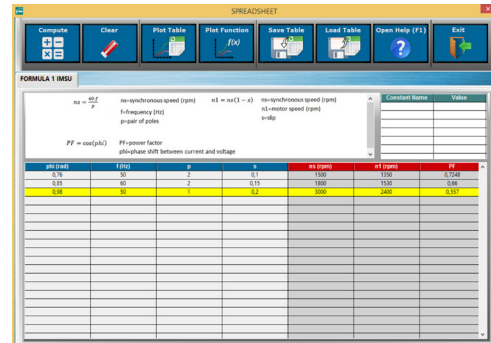
ESL-SOF. EDIBON Student LabSoft (Student Software) Application Main Screen



EPE. EDIBON Practical Exercise Program Package Main Screen



ERS. EDIBON Results & Statistics Program Package - Question Explanation



ECAL. EDIBON Calculations Program Package Main Screen

* Specifications subject to change without previous notice, due to the convenience of improvement of the product.



C/ Del Agua, 14. Polígono Industrial San José de Valderas.
28918 LEGANÉS. (Madrid). ESPAÑA - SPAIN.
Tel: 34-91-6199363 Fax: 34-91-6198647
E-mail: edibon@edibon.com Web: www.edibon.com

Edition: ED01/17
Date: October/2017

REPRESENTATIVE:

