

INTRODUCTION

The sanitary facilities are the set of pipes, equipment and accessories property of the building. Their function is the supply of water free of contaminants and removal of the wastewater. Special attention to the current Sanitary Standards is required.

Some objectives of the sanitary facilities are: providing enough water of good quality to supply all the sanitary services within the building, preventing wastewater from mixing with the water entering the building due to risk of contamination and removing wastewater quickly and safely.

Plumbing is the group of taps and valves used to regulate the passage of water in a place. Therefore, it is used for this purpose in sanitary facilities. Some factors to take into account when selecting a tap are its usefulness, a comfortable opening and benefits on the savings.

There are several types of sink taps: short, tall or wall-mount taps. Depending on their type of opening, they can be classified as single-handle taps (if they only have one handle to regulate the water flow and temperature) or double-handle taps (if they include one handle for cold water and another for hot water). Distance between the outlet pipes is usually 150 mm, so the bath and shower taps include adapters to adjust their width.

GENERAL DESCRIPTION

The Sanitary Fittings Training Unit, "TEIS", has been designed by EDIBON for training in the plumbing sector. It consists of an anodized aluminum frame and panels in painted steel in which tests can be carried out with the most common systems of sanitary fittings, such as different types of double-handle mixer tap and flushing valves, and to investigate their function and operation.

The unit includes a cold water connection and a hot water connection with quick-release fittings and two ball valves to supply water to the unit. Two adjustable pressure reducing valves regulate the water inlet flow and two flowmeters measure the inlet cold and hot water flow.

The unit provides several connection methods so additional sanitary fittings from several manufacturers can be used.

These sanitary fittings can be connected to study their function and operation.

The connection methods are:

One flushing valve connection. This method includes a mixed water connection and a mixed water drain.

Two standard connections to connect a double-handle mixer tap for a shower. These connections are flexible and can adapt to different fittings sizes.

Two connections for the wall-mount fittings to connect a double-handle mixer tap as a water tap. These connections can adapt to different fittings sizes.

Three dial thermometers and two Bourdon manometers measure the temperature and pressure at different points of the unit.

SPECIFICATIONS

Anodized aluminum frame and panels made of painted steel.

The unit includes wheels to facilitate its mobility.

Diagram in the front panel with distribution of the elements similar to the real one.

The unit includes:

A cold water connection and a hot water connection. They include quick-release couplings and two ball valves.

Two adjustable pressure reducing valves:

Max. inlet pressure: 25 bar.

Range of outlet pressure: 2 – 6 bar.

Max. temperature: 70 °C.

Two flowmeters, range: 2.5 – 26.5 l/min.

A flushing valve connection. This method includes a mixed water connection and a mixed water drain:

Size: DN20.

Pressure range: 1 – 5 bar.

Two standard connections to connect a dual-control mixer tap for a shower. These connections are flexible and can adapt to different sized fittings. This method includes a bracket to support the standard fitting.

Two connections for the wall-mounted fittings to connect a dual-control mixer tap as a water tap. These connections can adapt to different sized fittings.

Three dial thermometers, range: 0 – 100 °C.

Two Bourdon manometers, range: 0 – 6 bar.

Manuals: This unit is supplied with the following manuals: Required services, Assembly and Installation, Starting-up, Safety, Maintenance and Practices manual.

EXERCISES AND PRACTICAL POSSIBILITIES

- 1.- Familiarization with sanitary fittings (flushing valves, double-handle mixer tap, ...).
- 2.- Investigation of the function and operation of the most common sanitary fittings.
- 3.- Comparison of products from different manufacturers, such as tall taps, single-handle mixer tap, etc.

REQUIRED ACCESSORIES (Not included)

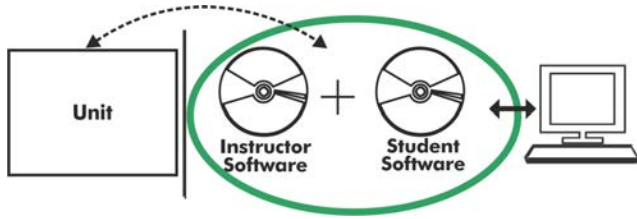
- Cold water supply, pressure: 1.5 bar.
- Hot water supply, pressure: 1.5 bar.
- Drainage.

DIMENSIONS AND WEIGHTS

TEIS:

- Dimensions: 1400 x 700 x 1900 mm approx.
(55.11 x 27.55 x 74.80 inches approx.)
- Weight: 120 Kg approx.
(264.55 pounds approx.)

TEIS/ICAI. Interactive Computer Aided Instruction Software System:



With no physical connection between unit and computer (PC), this complete software package consists of an Instructor Software (EDIBON Classroom Manager -ECM-SOF) totally integrated with the Student Software (EDIBON Student Labsoft -ESL-SOF). Both are interconnected so that the teacher knows at any moment what is the theoretical and practical knowledge of the students.

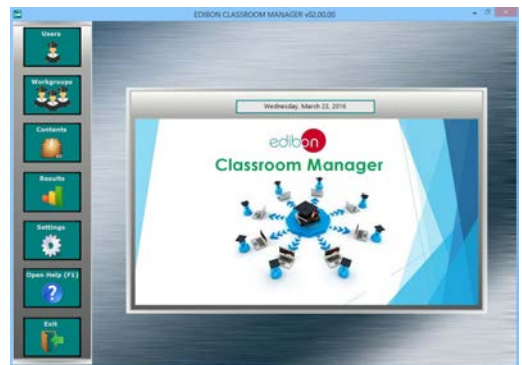
Instructor Software

- ECM-SOF. EDIBON Classroom Manager (Instructor Software).

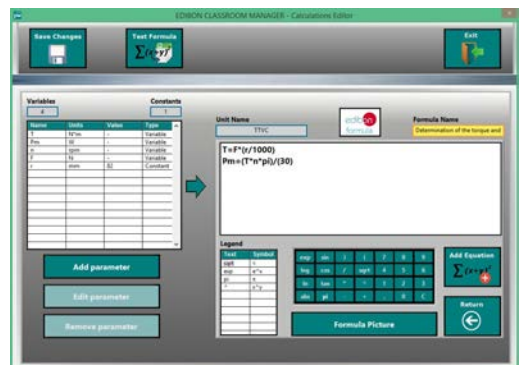
ECM-SOF is the application that allows the Instructor to register students, manage and assign tasks for workgroups, create own content to carry out Practical Exercises, choose one of the evaluation methods to check the Student knowledge and monitor the progression related to the planned tasks for individual students, workgroups, units, etc... so the teacher can know in real time the level of understanding of any student in the classroom.

Innovative features:

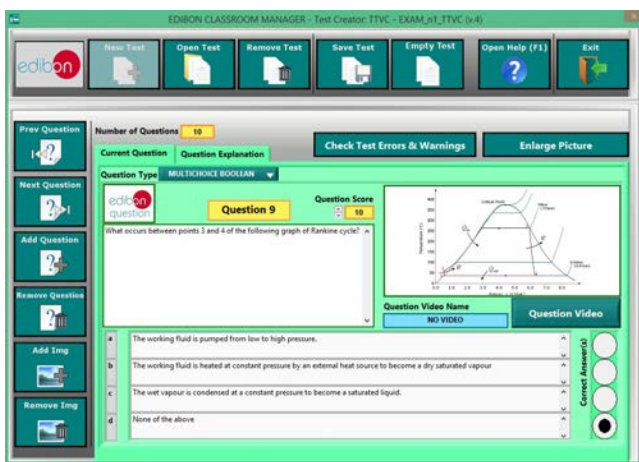
- User Data Base Management.
- Administration and assignment of Workgroup, Task and Training sessions.
- Creation and Integration of Practical Exercises and Multimedia Resources.
- Custom Design of Evaluation Methods.
- Creation and assignment of Formulas & Equations.
- Equation System Solver Engine.
- Updatable Contents.
- Report generation, User Progression Monitoring and Statistics.



ECM-SOF. EDIBON Classroom Manager (Instructor Software) Application Main Screen



ECAL. EDIBON Calculations Program Package - Formula Editor Screen



ETTE. EDIBON Training Test & Exam Program Package - Main Screen with Numeric Result Question



ERS. EDIBON Results & Statistics Program Package - Student Scores Histogram

Optional
Student Software

- **ESL-SOF. EDIBON Student Labsoft (Student Software).**

ESL-SOF is the application addressed to the Students that helps them to understand theoretical concepts by means of practical exercises and to prove their knowledge and progression by performing tests and calculations in addition to Multimedia Resources. Default planned tasks and an Open workgroup are provided by EDIBON to allow the students start working from the first session. Reports and statistics are available to know their progression at any time, as well as explanations for every exercise to reinforce the theoretically acquired technical knowledge.

Innovative features:

- Student Log-In & Self-Registration.
- Existing Tasks checking & Monitoring.
- Default contents & scheduled tasks available to be used from the first session.
- Practical Exercises accomplishment by following the Manual provided by EDIBON.
- Evaluation Methods to prove your knowledge and progression.
- Test self-correction.
- Calculations computing and plotting.
- Equation System Solver Engine.
- User Monitoring Learning & Printable Reports.
- Multimedia-Supported auxiliary resources.

For more information see ICAI catalogue. Click on the following link:

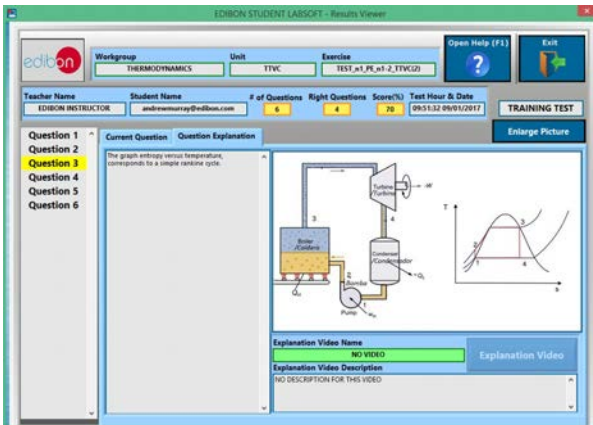
www.edibon.com/en/files/expansion/ICAI/catalog



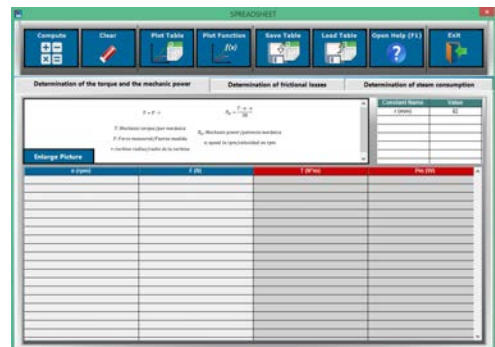
ESL-SOF. EDIBON Student LabSoft (Student Software)
Application Main Screen



EPE. EDIBON Practical Exercise Program Package Main Screen



ERS. EDIBON Results & Statistics Program Package - Question Explanation



ECAL. EDIBON Calculations Program Package Main Screen

* Specifications subject to change without previous notice, due to the convenience of improvement of the product.



C/ Del Agua, 14. Polígono Industrial San José de Valderas.
28918 LEGANÉS. (Madrid). ESPAÑA - SPAIN.
Tel.: 34-91-6199363 Fax: 34-91-6198647
E-mail: edibon@edibon.com Web: www.edibon.com

Edition: ED01/17
Date: November/2017

REPRESENTATIVE:

