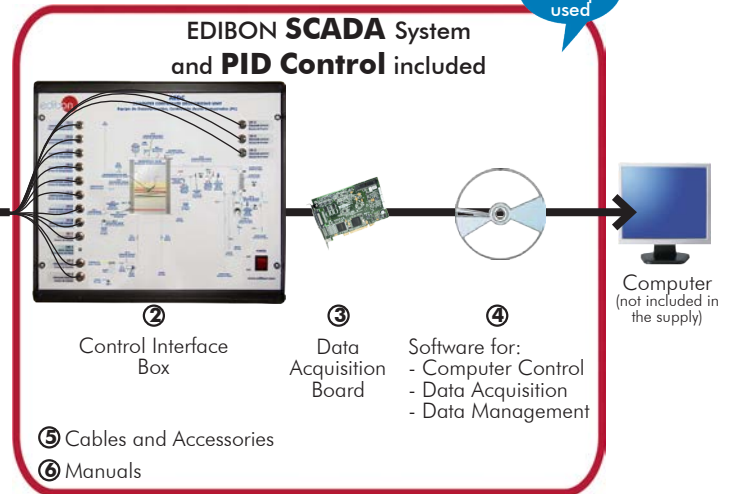


EDIBON PATENT

Teaching
Technique
used



① Unit: AEDC. Computer Controlled Deodorizing Unit



* Minimum supply always includes: 1 + 2 + 3 + 4 + 5 + 6
(Computer not included in the supply)

Key features:

- **Advanced Real-Time SCADA and PID Control.**
- **Open Control + Multicontrol + Real-Time Control.**
- **Specialized EDIBON Control Software based on Labview.**
- **National Instruments Data Acquisition board (250 KS/s, kilo samples per second).**
- **Calibration exercises, which are included, teach the user how to calibrate a sensor and the importance of checking the accuracy of the sensors before taking measurements.**
- **Projector and/or electronic whiteboard compatibility allows the unit to be explained and demonstrated to an entire class at one time.**
- **Capable of doing applied research, real industrial simulation, training courses, etc.**
- **Remote operation and control by the user and remote control for EDIBON technical support, are always included.**
- **Totally safe, utilizing 4 safety systems (Mechanical, Electrical, Electronic & Software).**
- **Designed and manufactured under several quality standards.**
- **Optional CAL software helps the user perform calculations and comprehend the results.**
- **This unit has been designed for future expansion and integration. A common expansion is the EDIBON Scada-Net (ESN) System which enables multiple students to simultaneously operate many units in a network.**

**OPEN CONTROL
+
MULTICONTROL
+
REAL TIME CONTROL**

www.edibon.com
 ↳ Products
 ↳ Products range
 ↳ Units
 ↳ 12.- Food & Water Technologies

For more information about Key Features, click here



ISO 9000: Quality Management (for Design, Manufacturing, Commercialization and After-sales service)



European Union Certificate (total safety)



Certificates ISO 14000 and ECO-Management and Audit Scheme (environmental management)



Worlddidac Quality Charter Certificate and Worlddidac Member

INTRODUCTION

Deodorization gradually evolved from a 'simple' process to remove off-flavors to an operation with a big impact on the refined oil quality. It is important to remove any undesirable compounds that can affect flavor, odor, stability and/or color.

Deodorization is a vacuum steam distillation process in which steam is passed through of oil at low pressure and high temperature in order to remove any substance still present after the preceding processing stages.

The Computer Controlled Deodorizing Unit "AEDC" is a unit for teaching/training the deodorization process, which allows stripping undesirable compounds from edible oils through a vacuum steam distillation under low pressure and high temperature with steam.

GENERAL DESCRIPTION

The Computer Controlled Deodorizing Unit "AEDC" is a batch deodorizing process unit able to perform a vacuum steam distillation under low pressure and high temperature with steam. Several factors that influence the process can be studied. The unit consists of a deodorizing vessel, a vacuum system, a steam line, a discharge pump and a polishing filter.

The deodorizing vessel is equipped with a computer controlled heating element to heat the oil, a steam distributor that allows the steam/oil mixing required, and an immersed cooling water coil to reduce the oil temperature when the process has completed. This vessel is equipped with a sight glass so that the process can be visualized. This vessel includes a security valve, a level switch and a pressure sensor and a manometer to measure the vessel pressure.

The steam line injects steam from the steam generator to the deodorizing vessel with a steam distributor. This line includes a steam trap, a security valve, a check valve, a high pressure switch and two computer controlled solenoid valves.

Vapor from the vessel, with the undesirable compounds, is directed to the condenser of the vacuum system, through which cooling water flows. This system includes a computer controlled liquid ring vacuum pump to achieve the vacuum in the vessel. The condensed compounds pass to be drained with the sealing water of the vacuum pump.

To complete the deodorizing process, the treated oil is pumped out of the deodorizing vessel through a computer controlled pump and a polishing filter.

Pressure, temperature and flow sensors are supplied where is necessary, as well as adequate sampling and drain valves. This unit is protected by a transparent sheet.

The process control is done from the computer using EDIBON control software. This software will allow an automatic control (PID) of the oil temperature with the heating element.

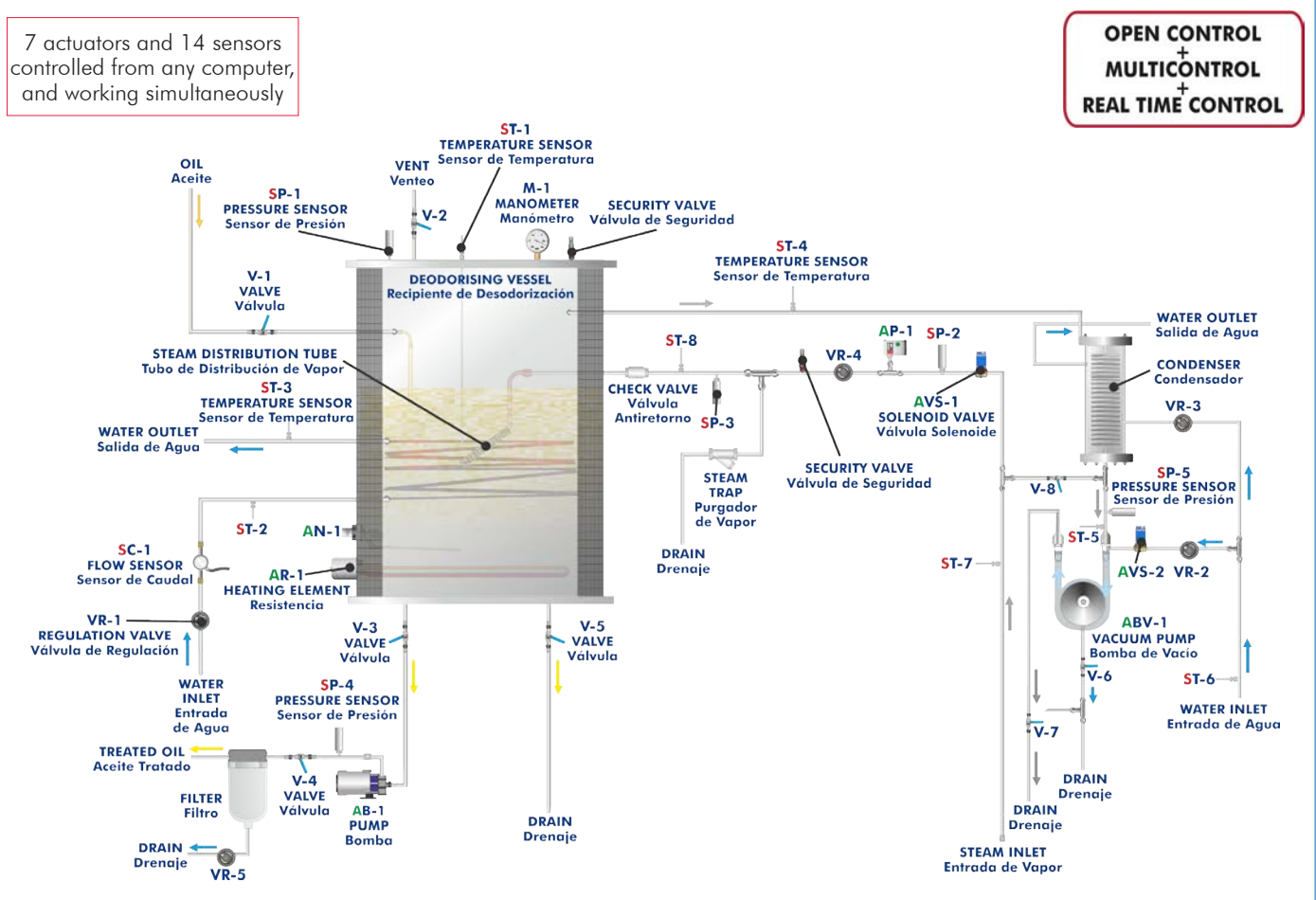
The unit allows two operation modes:

Deodorizing: the oil is heated under vacuum and the steam provides the agitation required. When pressure and temperature conditions are achieved, the steam is adjusted to ensure a good physical contact of the steam with the oil. The undesirable compounds are carried over in the steam and the condensates are blended with the sealing water of the vacuum pump and then discharged to be drained.

Polishing: after the deodorizing process and the oil refining process is complete. This oil is free of any trace of contaminants. To achieve this, it is pumped through a fine "polishing" filter that removes particles from 5.0 microns on, giving bright oil as product.

This Computer Controlled Unit is supplied with the EDIBON Computer Control System (SCADA), and includes: The unit itself + a Control Interface Box + a Data Acquisition Board + Computer Control, Data Acquisition and Data Management Software Packages, for controlling the process and all parameters involved in the process.

PROCESS DIAGRAM AND UNIT ELEMENTS ALLOCATION



With this unit there are several options and possibilities:

- Main items: 1, 2, 3, 4, 5 and 6.
- Optional items: 7, 8, 9, 10, 11 and 12.

Let us describe first the main items (1 to 6):

① AEDC. Unit:

Anodized aluminum frame and panels of painted steel.

Main metallic elements of stainless steel.

Diagram in the front panel with similar distribution to the elements in the real unit.

Deodorizing vessel:

Cylindrical vessel of stainless steel.

Working volume: 25 l.

Overall volume: 60 l.

It is equipped with a sight glass to visualize the process.

It includes a heating element, computer controlled, to heat the oil to temperatures of up to 200°C. Power: 3.0 kW.

It includes a jacket to insulate the process and to maintain the temperature inside.

It also contains a steam distributor to provide the steam/oil mixing required.

An immersed cooling water coil reduces the oil temperature to complete the process. Cooling coil area: 0.1 m².

This vessel also includes a security valve to limit the working pressure to 2 bars and a level switch.

Vacuum system. It includes:

A condenser.

Liquid ring vacuum pump, computer controlled, to achieve the vacuum in the deodorizing vessel.

Number of stages: 2. Motor power: 2.2 kW. Sealant: water.

Discharge pump, computer controlled:

This pump allows to impel the treated oil of the vessel through a polishing filter, max. flow: 60 l./min.

Polishing filter:

This filter removes any particles in the finished oil.

It is made of stainless steel and is designed to allow checking the installed cartridge.

Filter type: Replaceable cartridge made of polypropylene.

Filter element size: 5.0 micron.

Steam line. It includes:

Two computer controlled solenoid valves. Security valve to limit the working pressure in the line to 5 bars.

Pressure switch (5 bar). Steam trap. Check valve. Regulation valve.

Pressure sensor and manometer to indicate the pressure in the deodorizing vessel and the vacuum level in the vessel. Pressure sensor range: -1 to 5 bar, manometer range: -1 to 5 bar.

2 Pressure sensors to measure the pressure at the steam line, range: -1 to 5 bar.

Pressure sensor to measure the pressure at the outlet of the condenser, range: -1 to 9 bar.

Pressure sensor to measure the pressure at the outlet of the discharge pump, range: 0-10 bar.

8 "J" type temperature sensors.

Flow sensor to measure the coil water flow, range: 1.5 - 30 l./min.

The process control is done from the computer using EDIBON control software. This software will allow an automatic control (PID) of the oil temperature with the heating element.

The unit allows two operation modes: Deodorizing and Polishing.

The complete unit includes as well:

Advanced Real-Time SCADA and PID Control.

Open Control + Multicontrol + Real-Time Control.

Specialized EDIBON Control Software based on Labview.

National Instruments Data Acquisition board (250 KS/s, kilo samples per second).

Calibration exercises, which are included, teach the user how to calibrate a sensor and the importance of checking the accuracy of the sensors before taking measurements.

Projector and/or electronic whiteboard compatibility allows the unit to be explained and demonstrated to an entire class at one time.

Capable of doing applied research, real industrial simulation, training courses, etc.

Remote operation and control by the user and remote control for EDIBON technical support, are always included.

Totally safe, utilizing 4 safety systems (Mechanical, Electrical, Electronic & Software).

Designed and manufactured under several quality standards.

Optional CAL software helps the user perform calculations and comprehend the results.

This unit has been designed for future expansion and integration. A common expansion is the EDIBON Scada-Net (ESN) System which enables multiple students to simultaneously operate many units in a network.



Unit: AEDC

② AEDC/CIB. Control Interface Box:

The Control Interface Box is part of the SCADA system.

Control interface box with process diagram in the front panel and with the same distribution that the different elements located in the unit, for an easy understanding by the student.

All sensors, with their respective signals, are properly manipulated from -10V. To +10V. computer output. Sensors connectors in the interface have different pines numbers (from 2 to 16), to avoid connection errors.

Single cable between the control interface box and computer.

The unit control elements are permanently computer controlled, without necessity of changes or connections during the whole process test procedure.

Simultaneous visualization in the computer of all parameters involved in the process.

Calibration of all sensors involved in the process.

Real time curves representation about system responses.

Storage of all the process data and results in a file.

Graphic representation, in real time, of all the process/system responses.

All the actuators' values can be changed at any time from the keyboard allowing the analysis about curves and responses of the whole process.

All the actuators and sensors values and their responses are displayed on only one screen in the computer.

Shield and filtered signals to avoid external interferences.

Real time PID control with flexibility of modifications from the computer keyboard of the PID parameters, at any moment during the process.

Real time PID and on/off control for pumps, compressors, heating elements, control valves, etc.

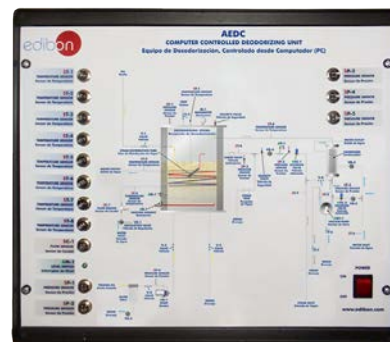
Real time PID control for parameters involved in the process simultaneously.

Proportional control, integral control and derivative control, based on the real PID mathematical formula, by changing the values, at any time, of the three control constants (proportional, integral and derivative constants).

Open control allowing modifications, at any moment and in real time, of parameters involved in the process simultaneously.

Possibility of automatization of the actuators involved in the process.

Three safety levels, one mechanical in the unit, another electronic in the control interface and the third one in the control software.



AEDC/CIB

③ DAB. Data Acquisition Board:

The Data Acquisition board is part of the SCADA system.

PCI Express Data acquisition board (National Instruments) to be placed in a computer slot. Bus PCI Express.

Analog input:

Number of channels= 16 single-ended or 8 differential. Resolution=16 bits, 1 in 65536.

Sampling rate up to: 250 KS/s (kilo samples per second).

Input range (V)= ±10 V. Data transfers=DMA, interrupts, programmed I/O. DMA channels=6.

Analog output:

Number of channels=2. Resolution=16 bits, 1 in 65536.

Maximum output rate up to: 900 KS/s.

Output range(V)= ±10 V. Data transfers=DMA, interrupts, programmed I/O.

Digital Input/Output:

Number of channels=24 inputs/outputs. D0 or DI Sample Clock frequency: 0 to 100 MHz.

Timing: Number of Counter/timers=4. Resolution: Counter/timers: 32 bits.



DAB

④ AEDC/CCSOF. PID Computer Control + Data Acquisition + Data Management Software:

The three softwares are part of the SCADA system.

Compatible with actual Windows operating systems. Graphic and intuitive simulation of the process in screen. **Compatible with the industry standards.**

Registration and visualization of all process variables in an automatic and simultaneous way.

Flexible, open and multicontrol software, developed with actual windows graphic systems, acting simultaneously on all process parameters.

Analog and digital PID control.

PID menu and set point selection required in the whole work range.

Management, processing, comparison and storage of data.

Sampling velocity up to 250 KS/s (kilo samples per second).

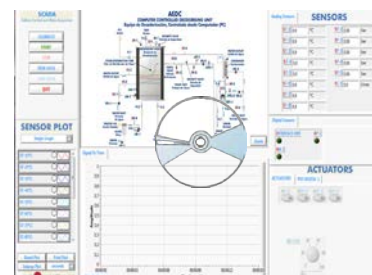
Calibration system for the sensors involved in the process.

It allows the registration of the alarms state and the graphic representation in real time.

Comparative analysis of the obtained data, after the process and modification of the conditions during the process.

Open software, allowing the teacher to modify texts, instructions. Teacher's and student's passwords to facilitate the teacher's control on the student, and allowing the access to different work levels.

This unit allows the 30 students of the classroom to visualize simultaneously all the results and the manipulation of the unit, during the process, by using a projector or an electronic whiteboard.



AEDC/CCSOF

⑤ Cables and Accessories, for normal operation.

⑥ Manuals:

This unit is **supplied with 8 manuals**: Required Services, Assembly and Installation, Interface and Control Software, Starting-up, Safety, Maintenance, Calibration & Practices Manuals.

*References 1 to 6 are the main items: AEDC + AEDC/CIB + DAB + AEDC/CCSOF + Cables and Accesories + Manuals are included in the minimum supply for enabling normal and full operation.

EXERCISES AND PRACTICAL POSSIBILITIES TO BE DONE WITH THE MAIN ITEMS

- 1.- Study of the operation of small scale version of the deodorizing industrial process.
 - 2.- Study of the variation of deodorizing process temperature.
 - 3.- Study of the variation of deodorizing process pressure.
 - 4.- Study of the variation of quantity of direct steam added to the deodorizing process.
 - 5.- Study of the variation of overall process time in the deodorizing process.
- Additional practical possibilities:
- 6.- Sensors calibration.
 - 7.- Study to determinate the optimum process conditions for different types of oil.
- Other possibilities to be done with this Unit:
- 8.- Many students view results simultaneously.
To view all results in real time in the classroom by means of a projector or an electronic whiteboard.
 - 9.- Open Control, Multicontrol and Real Time Control.
This unit allows intrinsically and/or extrinsically to change the span, gains; proportional, integral, derivate parameters; etc, in real time.
- 10.-The Computer Control System with SCADA and PID Control allow a real industrial simulation.
 - 11.-This unit is totally safe as uses mechanical, electrical and electronic, and software safety devices.
 - 12.-This unit can be used for doing applied research.
 - 13.-This unit can be used for giving training courses to Industries even to other Technical Education Institutions.
 - 14.-Control of the AEDC unit process through the control interface box without the computer.
 - 15.-Visualization of all the sensors values used in the AEDC unit process.
- By using PLC-PI additional 19 more exercises can be done.
 - Several other exercises can be done and designed by the user.

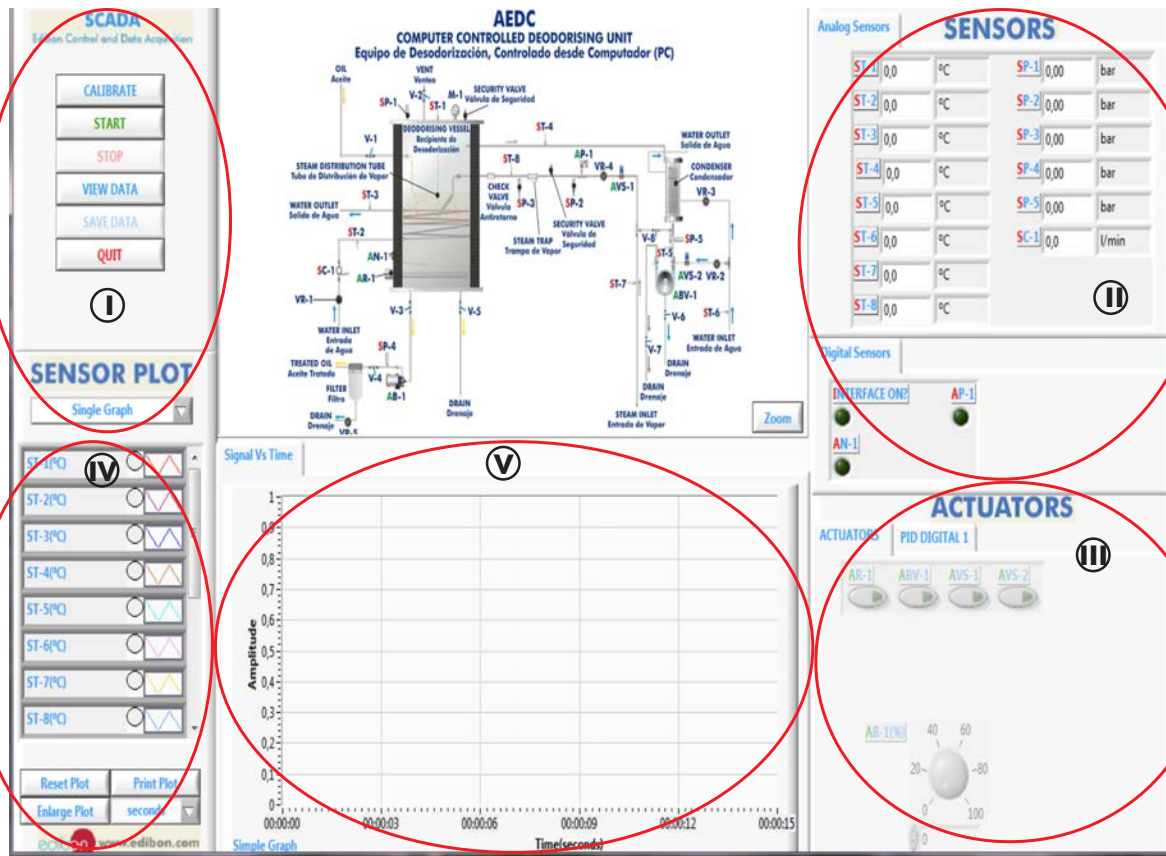
REQUIRED SERVICES

- Electrical supply: three-phase, 380V/50Hz. or 208V/60Hz., 20kW.
- Water supply for the liquid ring vacuum pump, the condenser and the coil of the deodorizing vessel. Flow: 20.0 l./min, pressure range: 3.0 - 5.0 bar, temperature: 15°C, approx.
- Drain system.
- Steam supply of minimum 4 bars and 10 Kg/h for the deodorizing vessel. Either EDIBON steam generator TGV-6KWA (for high pressures and high temperatures) or other steam generator can be used.
- Computer.

DIMENSIONS AND WEIGHTS

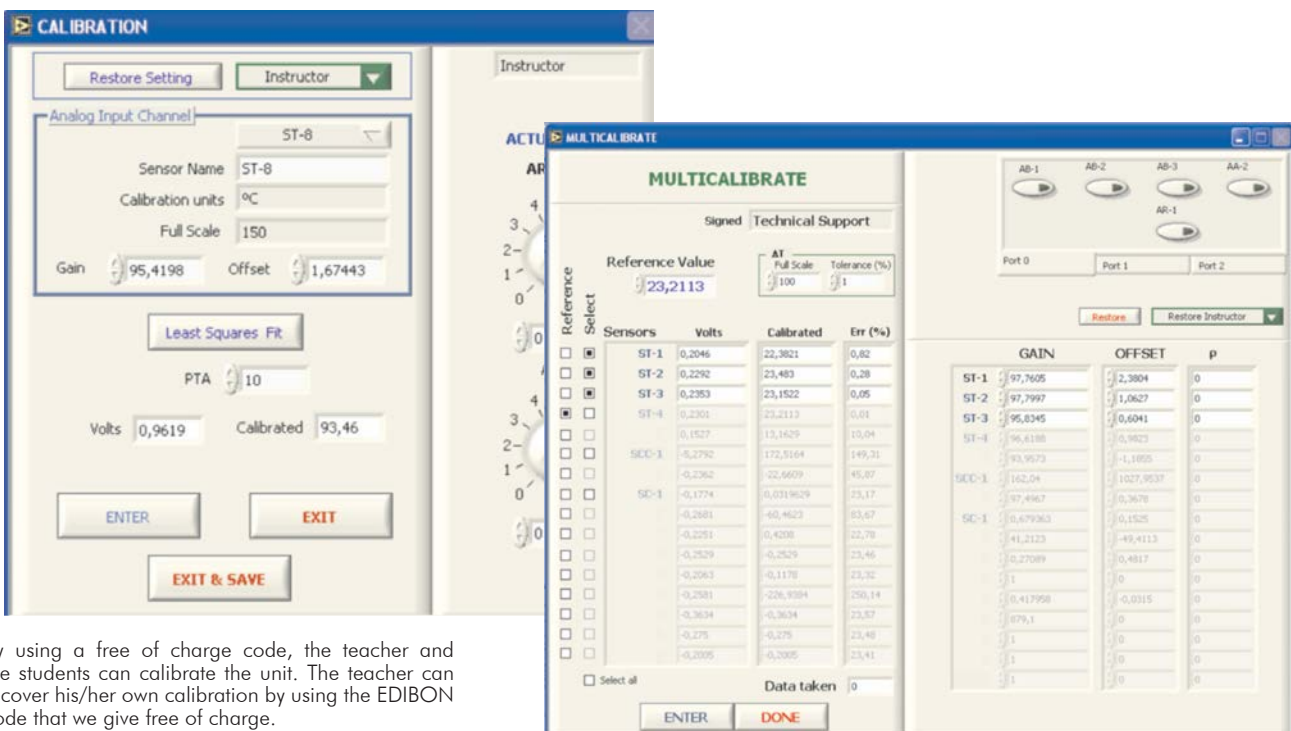
- AEDC:
- Unit:
- Dimensions: 1400 x 930 x 1800 mm. approx.
(55.11 x 36.61 x 70.86 inches approx.)
 - Weight: 520 Kg. approx.
(1146 pounds approx.).
- Control Interface Box:
- Dimensions: 490 x 450 x 470 mm. approx.
(19.29 x 17.71 x 18.50 inches approx.)
 - Weight: 20 Kg. approx.
(44 pounds approx.).

SCADA and PID Control
Main screen



- ❶ Main software operation possibilities.
- ❷ Sensors displays, real time values, and extra output parameters. Sensors: ST=Temperature sensor. SC=Flow sensor. SP=Pressure sensor.
- ❸ Actuators controls. Actuators: AB=Pump. AR=Heating element. AVS=Solenoid valve. ABV=Vacuum pump. AN=Level switch. AP=Pressure switch.
- ❹ Channel selection and other plot parameters.
- ❺ Real time graphics displays.

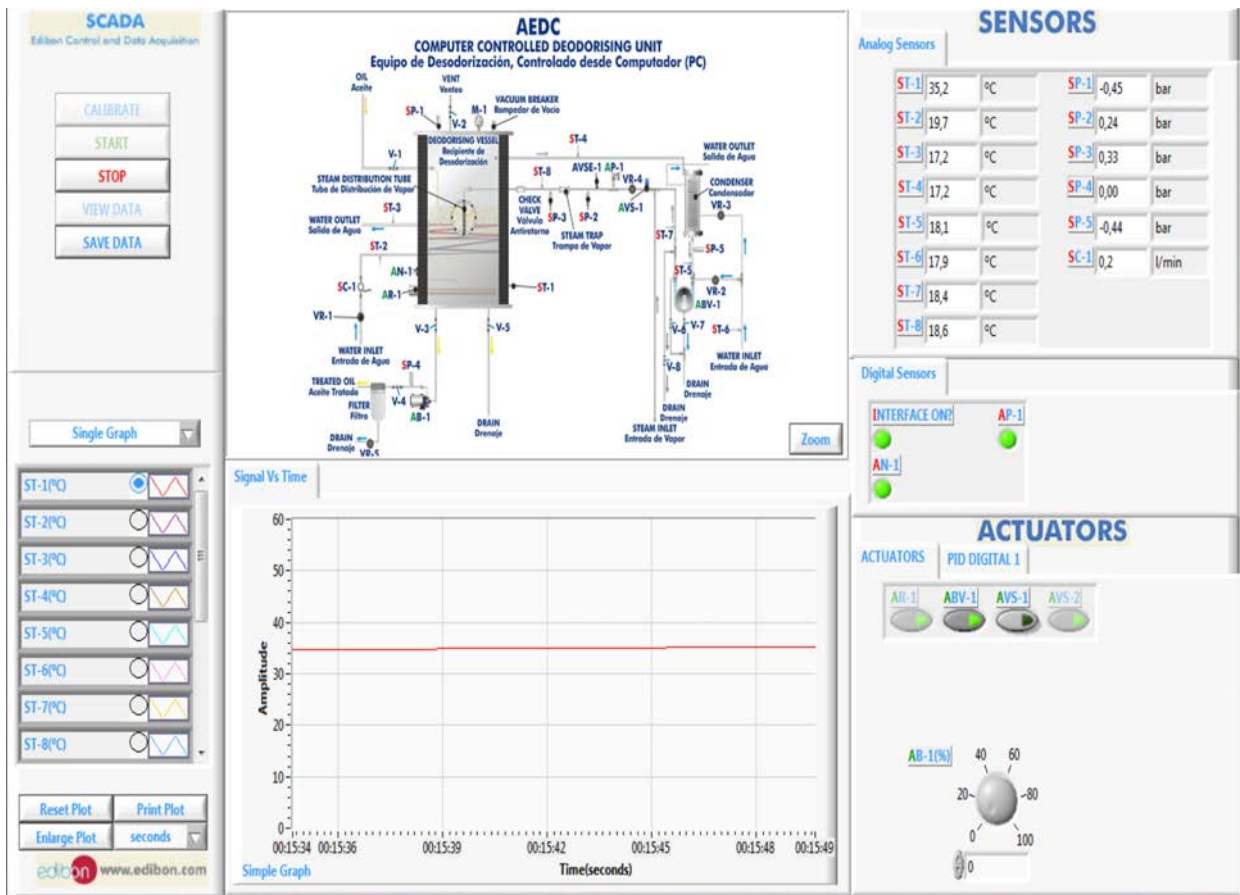
Software for Sensors Calibration
Examples of screens



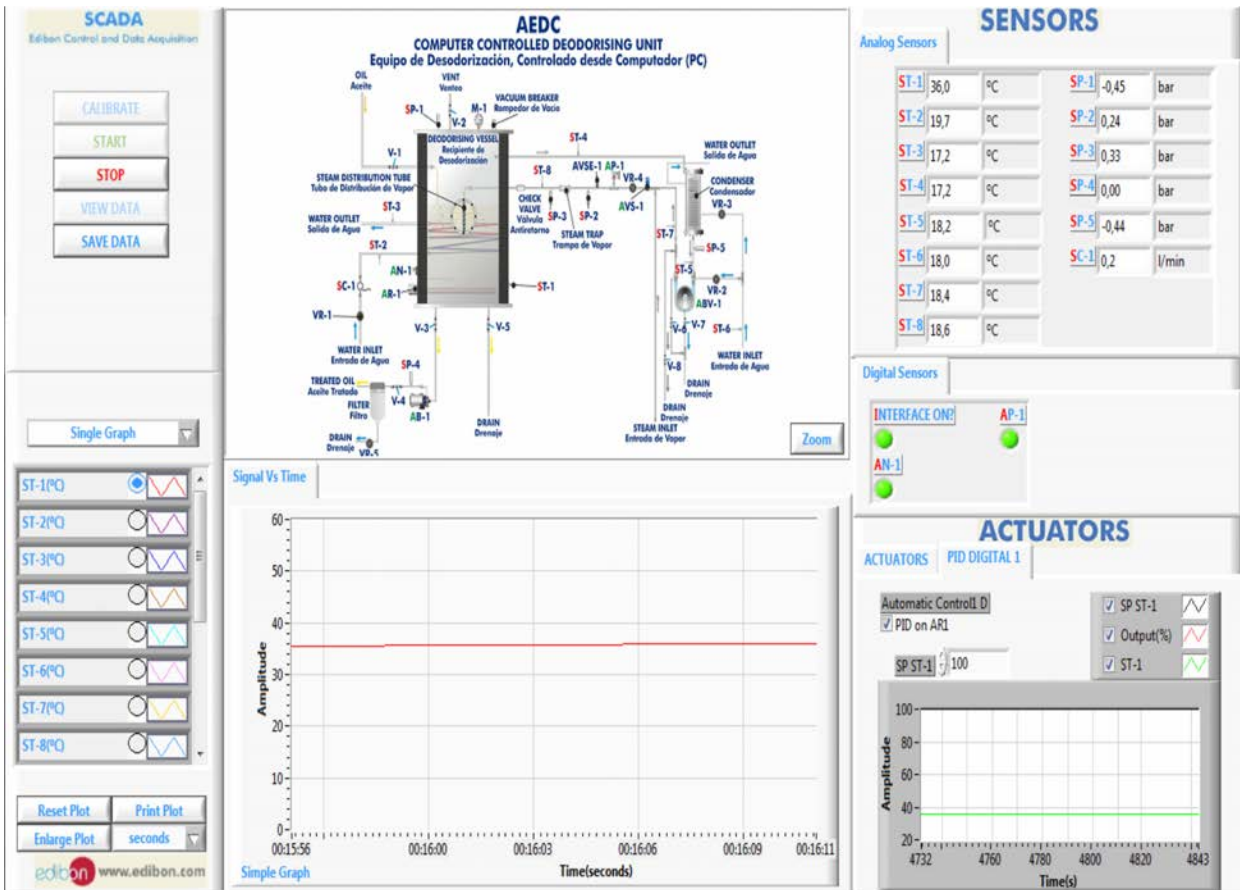
By using a free of charge code, the teacher and the students can calibrate the unit. The teacher can recover his/her own calibration by using the EDIBON code that we give free of charge.

SOME REAL RESULTS OBTAINED FROM THIS UNIT

This screen shows how the computer controlled liquid ring vacuum pump (ABV-1) allows to achieve vacuum levels (SP-1 sensor) in the deodorizing vessel.

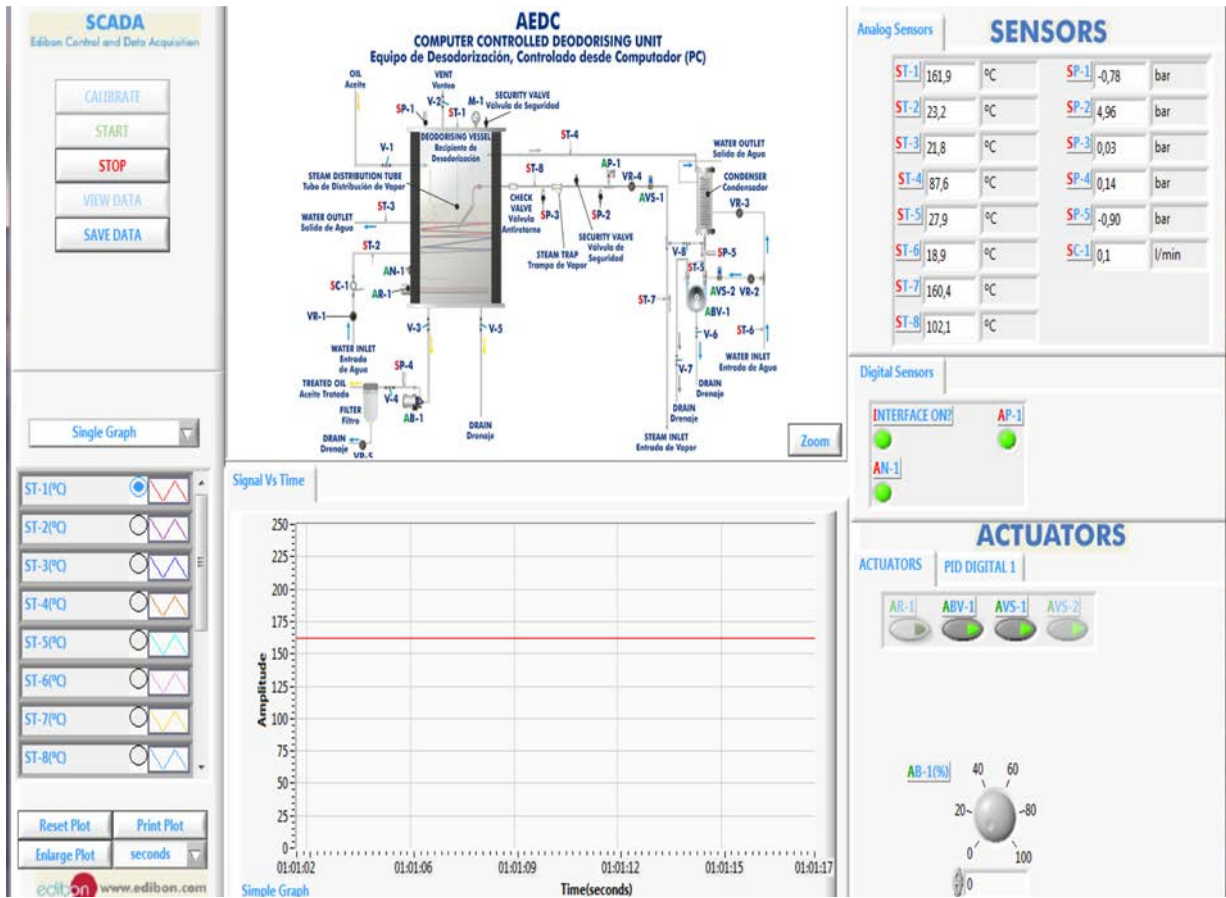


This screen shows the PID controller used to maintain the desired temperature inside the deodorizing vessel during the deodorization process.

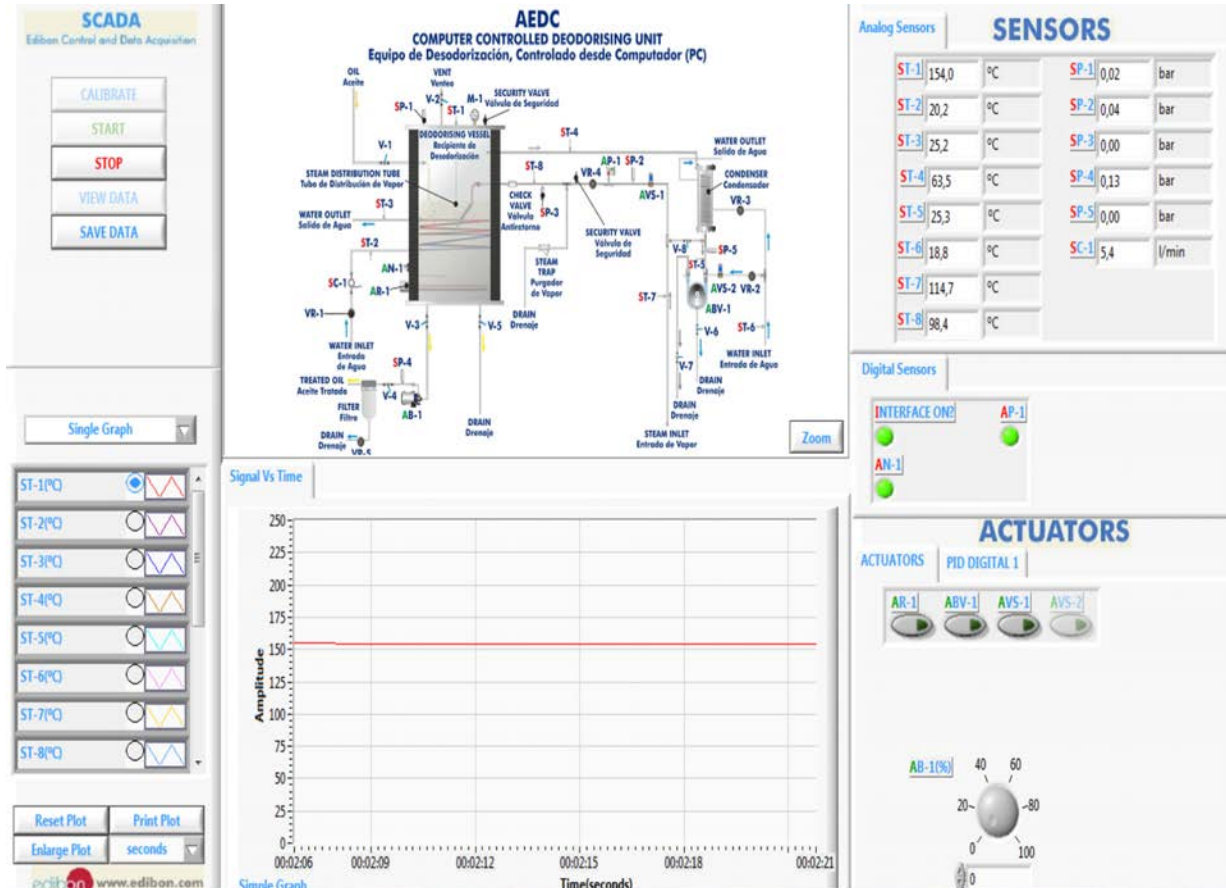


Some **real** results obtained from this Unit

This screen shows how the computer controlled liquid ring vacuum pump (ABV-1) allows to achieve the vacuum in the deodorizing vessel. The steam inlet (AVS-1 is activated) in the deodorizing vessel allows to rise the temperature inside the vessel.



An immersed cooling water coil inside of the deodorizing vessel allow to reduce the oil temperature when the process has completed.



Additionally to the main items (1 to 6) described, we can offer, as optional, other items from 7 to 12.

All these items try to give more possibilities for:

- a) Industrial configuration. (PLC)
- b) Technical and Vocational Education configuration. (CAL and FSS)
- c) Higher Education and/or Technical and Vocational Education configuration. (CAL)
- d) Multipost Expansions options. (Mini ESN and ESN)

a) Industrial configuration

⑦ **PLC. Industrial Control using PLC** (it includes PLC-PI Module plus PLC-SOF Control Software):

-PLC-PI. PLC Module:

Metallic box.

Circuit diagram in the module front panel.

Front panel:

Digital inputs (X) and Digital outputs (Y) block:

16 Digital inputs, activated by switches and 16 LEDs for confirmation (red).

14 Digital outputs (through SCSI connector) with 14 LEDs for message (green).

Analog inputs block:

16 Analog inputs (-10 V. to + 10 V.) (through SCSI connector).

Analog outputs block:

4 Analog outputs (-10 V. to + 10 V.) (through SCSI connector).

Touch screen:

High visibility and multiple functions. Display of a highly visible status. Recipe function. Bar graph function. Flow display function. Alarm list. Multi language function. True type fonts.

Back panel:

Power supply connector. Fuse 2A. RS-232 connector to PC. USB 2.0 connector to PC.

Inside:

Power supply outputs: 24 Vdc, 12 Vdc, -12 Vdc, 12 Vdc variable.

Panasonic PLC:

High-speed scan of 0.32 μsec. for a basic instruction.

Program capacity of 32 Ksteps, with a sufficient comment area.

Power supply input (100 to 240 V AC).

DC input: 16 (24 V DC).

Relay output: 14.

High-speed counter.

Multi-point PID control.

Digital inputs/outputs and analog inputs/outputs Panasonic modules.

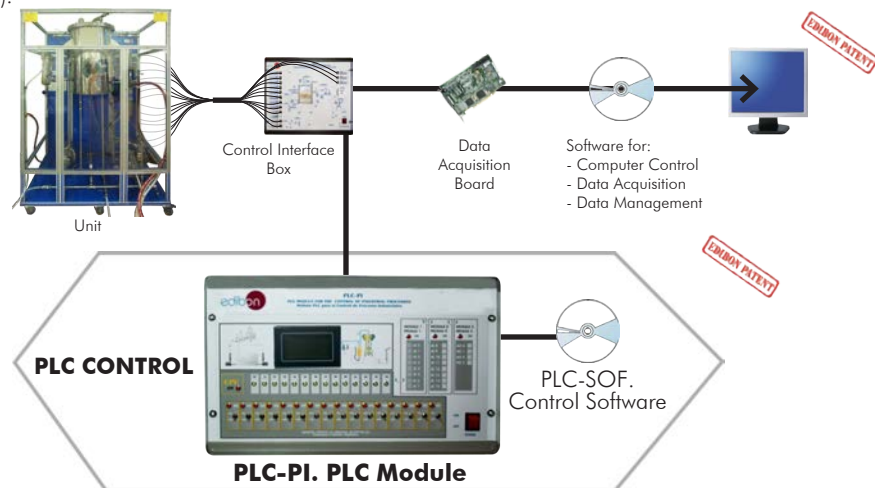
Communication RS232 wire to computer (PC).

Dimensions: 490 x 330 x 310 mm. approx. (19.29 x 12.99 x 12.20 inches approx.). Weight: 30 Kg. approx. (66 pounds approx.).

-AEDC/PLC-SOF. PLC Control Software:

For this particular unit, always included with PLC supply.

The software has been designed using Labview and it follows the unit operation procedure and linked with the Control Interface Box used in the Computer Controlled Deodorizing Unit (AEDC).



Practices to be done with PLC-PI:

- 1.- Control of a specific unit process through the control interface box without the computer.
- 2.- Visualization of all the sensors values used in a specific unit process.
- 3.- Calibration of all sensors included in a specific unit process.
- 4.- Hand on of all the actuators involved in a specific unit process.
- 5.- Realization of different experiments, in automatic way, without having in front a specific unit. (This experiment can be previously decided).
- 6.- Simulation of outside actions, in the cases do not exist hardware elements. (Example: test of complementary tanks, complementary industrial environment to the process to be studied, etc).
- 7.- PLC general use.
- 8.- PLC process application for a specific unit.
- 9.- PLC structure.
- 10.- PLC inputs and outputs configuration.
- 11.- PLC configuration possibilities.
- 12.- PLC program languages.
- 13.- PLC different programming standard languages (ladder diagram (LD), structured text (ST), instructions list (IL), sequential function chart (SFC), function block diagram (FBD)).
- 14.- New configuration and development of new process.
- 15.- Hand on an established process.
- 16.- To visualize and see the results and to make comparisons with a specific unit process.
- 17.- Possibility of creating new process in relation with a specific unit.
- 18.- PLC Programming Exercises.
- 19.- Own PLC applications in accordance with teacher and student requirements.

b) Technical and Vocational Education configuration

③ **AEDC/CAI. Computer Aided Instruction Software System.**

This complete software package includes two Softwares: the INS/SOF. Classroom Management Software (Instructor Software) and the AEDC/SOF. Computer Aided Instruction Software (Student Software).

This software is optional and can be used additionally to items (1 to 6).

This complete software package consists of an Instructor Software (INS/SOF) totally integrated with the Student Software (AEDC/SOF). Both are interconnected so that the teacher knows at any moment what is the theoretical and practical knowledge of the students.

INS/SOF. Classroom Management Software (Instructor Software):

The Instructor can:

- Organize Students by Classes and Groups.
- Create easily new entries or delete them.
- Create data bases with student information.
- Analyze results and make statistical comparisons.
- Generate and print reports.
- Detect student's progress and difficulties.
- ...and many other facilities.

Instructor Software



AEDC/SOF. Computer Aided Instruction Software (Student Software):

It explains how to use the unit, run the experiments and what to do at any moment.

This Software contains:

- Theory.
- Exercises.
- Guided Practices.
- Exams.

Student Software



For more information see CAI catalogue. Click on the following link:

www.edibon.com/products/catalogues/en/CAI.pdf

③ **AEDC/FSS. Faults Simulation System.**

Faults Simulation System (FSS) is a Software package that simulates several faults in any EDIBON Computer Controlled Unit. It is useful for Technical and Vocational level.

The "FAULTS" mode consists in causing several faults in the unit normal operation. The student must find them and solve them. There are several kinds of faults that can be grouped in the following sections:

Faults affecting the sensors measurement:

- An incorrect calibration is applied to them.
- Non-linearity.

Faults affecting the actuators:

- Actuators channels interchange at any time during the program execution.
- Response reduction of an actuator.

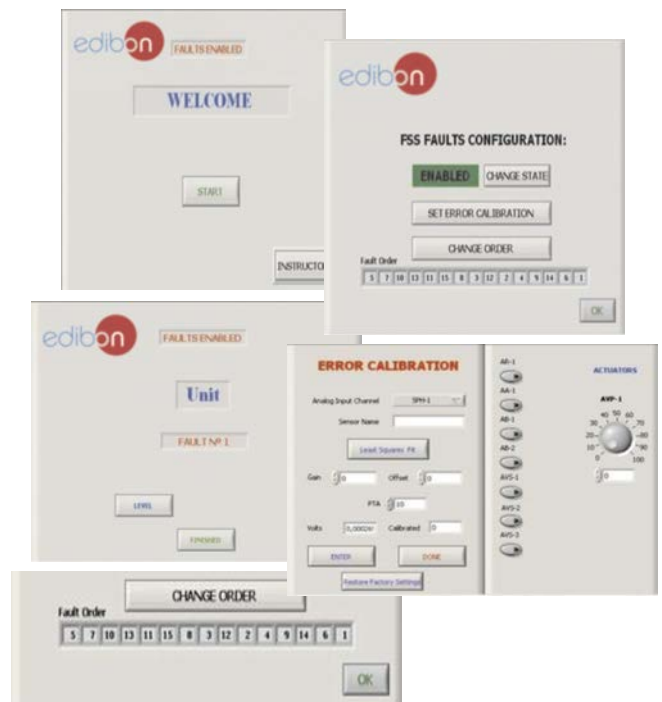
Faults in the controls execution:

- Inversion of the performance in ON/OFF controls.
- Reduction or increase of the calculated total response.
- The action of some controls is annulled.

On/off faults:

- Several on/off faults can be included.

Example of some screens



For more information see FSS catalogue. Click on the following link:

www.edibon.com/products/catalogues/en/FSS.pdf

c) Higher Education and/or Technical and Vocational Education configuration

10) **AEDC/CAL. Computer Aided Learning Software (Results Calculation and Analysis).**

This Computer Aided Learning Software (CAL) is a Windows based software, simple and very easy to use, specifically developed by EDIBON. It is very useful for Higher Education level.

CAL is a class assistant that helps in doing the necessary calculations to extract the right conclusions from data obtained during the experimental practices.

CAL computes the value of all the variables involved and performs the calculations.

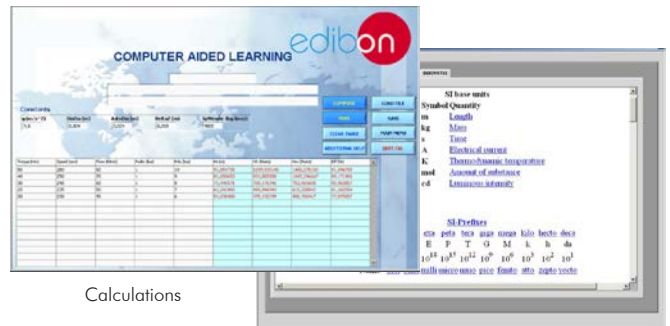
It allows to plot and print the results. Within the plotting options, any variable can be represented against any other.

Different plotting displays.

It has a wide range of information, such as constant values, unit conversion factors and integral and derivative tables.

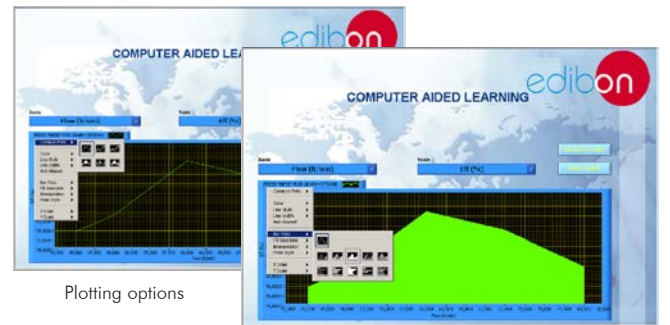
For more information see CAL catalogue. Click on the following link:

www.edibon.com/products/catalogues/en/CAL.pdf



Calculations

Information of constant values, unit conversion factors and integral and derivative tables



Plotting options

d) Multipost Expansions options

11) **Mini ESN. EDIBON Mini Scada-Net System.**

Mini ESN. EDIBON Mini Scada-Net System allows up to 30 students to work with a Teaching Unit in any laboratory, simultaneously. It is useful for both, Higher Education and/or Technical and Vocational Education.

The Mini ESN system consists of the adaptation of any EDIBON Computer Controlled Unit with SCADA and PID Control integrated in a local network.

This system allows to view/control the unit remotely, from any computer integrated in the local net (in the classroom), through the main computer connected to the unit. Then, the number of possible users who can work with the same unit is higher than in an usual way of working (usually only one).

Main characteristics:

- It allows up to 30 students to work simultaneously with the EDIBON Computer Controlled Unit with SCADA and PID Control, connected in a local net.
- Open Control + Multicontrol + Real Time Control + Multi Student Post.
- Instructor controls and explains to all students at the same time.
- Any user/student can work doing "real time" control/multicontrol and visualisation.
- Instructor can see in the computer what any user/student is doing in the unit.
- Continuous communication between the instructor and all the users/students connected.

Main advantages:

- It allows an easier and quicker understanding.
- This system allows you can save time and cost.
- Future expansions with more EDIBON Units.

For more information see Mini ESN catalogue. Click on the following link:

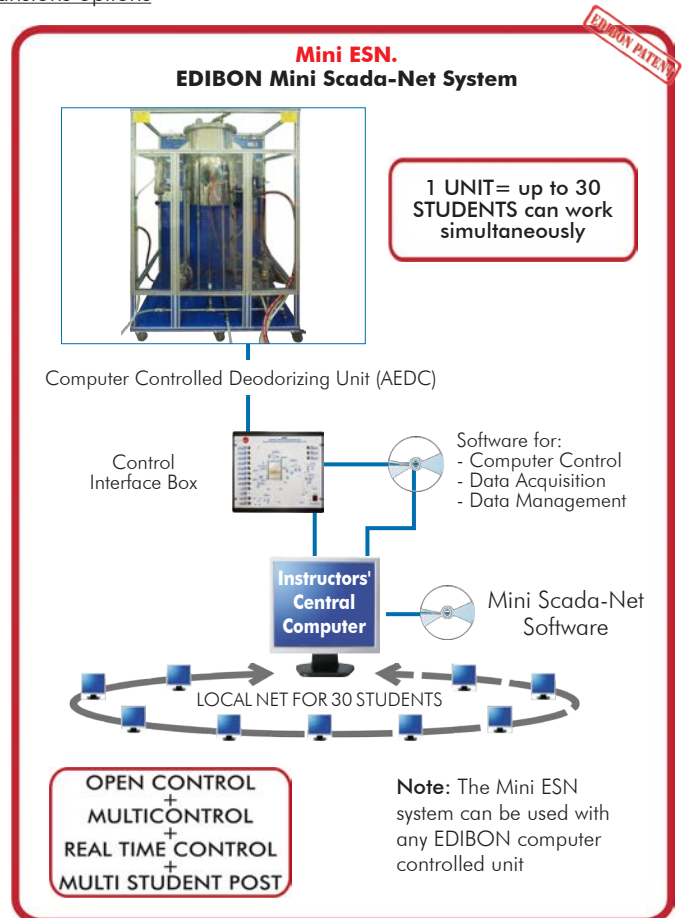
www.edibon.com/products/catalogues/en/Mini-ESN.pdf

12) **ESN. EDIBON Scada-Net System.**

This unit can be integrated, in the future, into a Complete Laboratory with many Units and many Students.

For more information see ESN catalogue. Click on the following link:

www.edibon.com/products/catalogues/en/units/foodwatertechnologies/esn-foodtechnology/ESN-FOOD_TECHNOLOGY.pdf



ORDER INFORMATION

Main items (always included in the supply)

Minimum supply always includes:

- ① **Unit: AEDC. Computer Controlled Deodorizing Unit.**
- ② **AEDC/CIB. Control Interface Box.**
- ③ **DAB. Data Acquisition Board.**
- ④ **AEDC/CCSOF. PID Computer Control + Data Acquisition + Data Management Software.**
- ⑤ **Cables and Accessories**, for normal operation.
- ⑥ **Manuals.**

* **IMPORTANT:** Under AEDC we always supply all the elements for immediate running as 1, 2, 3, 4, 5 and 6.

Optional items (supplied under specific order)

a) Industrial configuration

- ⑦ PLC. Industrial Control using PLC (it includes PLC-PI Module plus PLC-SOF Control Software):
 - PCL-PI. PLC Module.
 - AEDC/PLC-SOF. PLC Control Software.

b) Technical and Vocational configuration

- ⑧ AEDC/CAI. Computer Aided Instruction Software System.
- ⑨ AEDC/FSS. Faults Simulation System.

c) Higher Education and/or Technical and Vocational Education configuration

- ⑩ AEDC/CAL. Computer Aided Learning Software (Results Calculation and Analysis).

d) Multipost Expansions options

- ⑪ Mini ESN. EDIBON Mini Scada-Net System.
- ⑫ ESN. EDIBON Scada-Net System.

① AEDC. Unit:

Anodized aluminum frame and panels of painted steel.
 Main metallic elements of stainless steel.
 Diagram in the front panel with similar distribution to the elements in the real unit.
 Deodorizing vessel:
 Cylindrical vessel of stainless steel.
 Working volume: 25 l.
 Overall volume: 60 l.
 It is equipped with a sight glass to visualize the process.
 It includes a heating element, computer controlled, to heat the oil to temperatures of up to 200°C. Power: 3.0 kW.
 It includes a jacket to insulate the process and to maintain the temperature inside.
 It also contains a steam distributor to provide the steam/oil mixing required.
 An immersed cooling water coil reduces the oil temperature to complete the process. Cooling coil area: 0.1 m².
 This vessel also includes a security valve to limit the working pressure to 2 bars and a level switch.
 Vacuum system. It includes:
 A condenser.
 Liquid ring vacuum pump, computer controlled, to achieve the vacuum in the deodorizing vessel.
 Number of stages: 2. Motor power: 2.2 kW. Sealant: water.
 Discharge pump, computer controlled:
 This pump allows to impel the treated oil of the vessel through a polishing filter, max. flow: 60 l./min.
 Polishing filter:
 This filter removes any particles in the finished oil.
 It is made of stainless steel and is designed to allow checking of the installed cartridge.
 Filter type: Replaceable cartridge made of polypropylene.
 Filter element size: 5.0 micron.
 Steam line. It includes:
 Two computer controlled solenoid valves. Security valve to limit the working pressure in the line to 5 bars.
 Pressure switch (5 bar). Steam trap. Check valve. Regulation valve.
 Pressure sensor and manometer to indicate the pressure in the deodorizing vessel and the vacuum level in the vessel. Pressure sensor range: -1 to 5 bar, manometer range: -1 to 5 bar.
 2 Pressure sensors to measure the pressure at the steam line, range: -1 to 5 bar.
 Pressure sensor to measure the pressure at the outlet of the condenser, range: -1 to 9 bar.
 Pressure sensor to measure the pressure at the outlet of the discharge pump, range: 0-10 bar.
 8 "J" type temperature sensors.
 Flow sensor to measure the coil water flow, range: 1.5 - 30 l./min.
 The process control is done from the computer using EDIBON control software. This software will allow an automatic control (PID) of the oil temperature with the heating element.
 The unit allows two operation modes: Deodorizing and Polishing.
 The complete unit includes as well:
 Advanced Real-Time SCADA and PID Control.
 Open Control + Multicontrol + Real-Time Control.
 Specialized EDIBON Control Software based on Labview.
 National Instruments Data Acquisition board (250 KS/s, kilo samples per second).
 Calibration exercises, which are included, teach the user how to calibrate a sensor and the importance of checking the accuracy of the sensors before taking measurements.
 Projector and/or electronic whiteboard compatibility allows the unit to be explained and demonstrated to an entire class at one time.
 Capable of doing applied research, real industrial simulation, training courses, etc.
 Remote operation and control by the user and remote control for EDIBON technical support, are always included.
 Totally safe, utilizing 4 safety systems (Mechanical, Electrical, Electronic & Software).
 Designed and manufactured under several quality standards.
 Optional CAL software helps the user perform calculations and comprehend the results.
 This unit has been designed for future expansion and integration. A common expansion is the EDIBON Scada-Net (ESN) System which enables multiple students to simultaneously operate many units in a network.

② AEDC/CIB. Control Interface Box:

The Control Interface Box is part of the SCADA system.
 Control interface box with process diagram in the front panel.
 The unit control elements are permanently computer controlled.
 Simultaneous visualization in the computer of all parameters involved in the process.
 Calibration of all sensors involved in the process.
 Real time curves representation about system responses.
 All the actuators' values can be changed at any time from the keyboard allowing the analysis about curves and responses of the whole process.
 Shield and filtered signals to avoid external interferences.
 Real time PID control with flexibility of modifications from the computer keyboard of the PID parameters, at any moment during the process.
 Real time PID control for parameters involved in the process simultaneously.
 Proportional control, integral control and derivative control, based on the real PID mathematical formula, by changing the values, at any time, of the three control constants (proportional, integral and derivative constants).
 Open control allowing modifications, at any moment and in real time, of parameters involved in the process simultaneously.
 Three safety levels, one mechanical in the unit, another electronic in the control interface and the third one in the control software.

③ DAB. Data Acquisition Board:

The Data Acquisition board is part of the SCADA system.
 PCI Express Data acquisition board (National Instruments) to be placed in a computer slot.
 Analog input: Channels= 16 single-ended or 8 differential. Resolution=16 bits, 1 in 65536. Sampling rate up to: 250 KS/s (kilo samples per second).
 Analog output: Channels=2. Resolution=16 bits, 1 in 65536.
 Digital Input/Output: Channels=24 inputs/outputs.

④ AEDC/CCSOF. PID Computer Control +Data Acquisition+Data Management Software:

The three softwares are part of the SCADA system.
 Compatible with the industry standards.
 Flexible, open and multicontrol software, developed with actual windows graphic systems, acting simultaneously on all process parameters.
 Analog and digital PID control. PID menu and set point selection required in the whole work range.
 Management, processing, comparison and storage of data.
 Sampling velocity up to 250 KS/s (kilo samples per second).
 Calibration system for the sensors involved in the process.
 It allows the registration of the alarms state and the graphic representation in real time.
 Open software, allowing the teacher to modify texts, instructions. Teacher's and student's passwords to facilitate the teacher's control on the student, and allowing the access to different work levels.
 This unit allows the 30 students of the classroom to visualize simultaneously all the results and the manipulation of the unit, during the process, by using a projector or an electronic whiteboard.

⑤ Cables and Accessories, for normal operation.

⑥ Manuals:

This unit is supplied with 8 manuals: Required Services, Assembly and Installation, Interface and Control Software, Starting-up, Safety, Maintenance, Calibration & Practices Manuals.

Exercises and Practical Possibilities to be done with the Main Items

- 1.- Study of the operation of small scale version of the deodorizing industrial process.
- 2.- Study of the variation of deodorizing process temperature.
- 3.- Study of the variation of deodorizing process pressure.
- 4.- Study of the variation of quantity of direct steam added to the deodorizing process.
- 5.- Study of the variation of overall process time in the deodorizing process.

Additional practical possibilities:

- 6.- Sensors calibration.
- 7.- Study to determinate the optimum process conditions for different types of oil.

Other possibilities to be done with this Unit:

- 8.- Many students view results simultaneously.
To view all results in real time in the classroom by means of a projector or an electronic whiteboard.
 - 9.- Open Control, Multicontrol and Real Time Control.
This unit allows intrinsically and/or extrinsically to change the span, gains; proportional, integral, derivate parameters; etc, in real time.
 - 10.- The Computer Control System with SCADA and PID Control allow a real industrial simulation.
 - 11.- This unit is totally safe as uses mechanical, electrical and electronic, and software safety devices.
 - 12.- This unit can be used for doing applied research.
 - 13.- This unit can be used for giving training courses to Industries even to other Technical Education Institutions.
 - 14.- Control of the AEDC unit process through the control interface box without the computer.
 - 15.- Visualization of all the sensors values used in the AEDC unit process.
- By using PLC-PI additional 19 more exercises can be done.
 - Several other exercises can be done and designed by the user.

a) Industrial configuration

⑦ PLC. Industrial Control using PLC (it includes PLC-PI Module plus PLC-SOF Control Software):

-PLC-PI. PLC Module:

Metallic box.
 Circuit diagram in the module front panel.
 Digital inputs (X) and Digital outputs (Y) block: 16 Digital inputs. 14 Digital outputs.
 Analog inputs block: 16 Analog inputs.
 Analog outputs block: 4 Analog outputs.
 Touch screen.
 Panasonic PLC:
 High-speed scan of 0.32 μ sec. Program capacity of 32 Ksteps. High-speed counter. Multi-point PID control.
 Digital inputs/outputs and analog inputs/outputs Panasonic modules.

-AEDC/PLC-SOF. PLC Control Software:

For this particular unit, always included with PLC supply.

Practices to be done with PLC-PI:

- 1.- Control of a specific unit process through the control interface box without the computer.
- 2.- Visualization of all the sensors values used in a specific unit process.
- 3.- Calibration of all sensors included in a specific unit process.
- 4.- Hand on of all the actuators involved in a specific unit process.
- 5.- Realization of different experiments, in automatic way, without having in front a specific unit. (This experiment can be previously decided).
- 6.- Simulation of outside actions, in the cases do not exist hardware elements. (Example: test of complementary tanks, complementary industrial environment to the process to be studied, etc).
- 7.- PLC general use.
- 8.- PLC process application for a specific unit.
- 9.- PLC structure.
- 10.-PLC inputs and outputs configuration.
- 11.-PLC configuration possibilities.
- 12.-PLC program languages.
- 13.-PLC different programming standard languages (ladder diagram (LD), structured text (ST), instructions list (IL), sequential function chart (SFC), function block diagram (FBD)).
- 14.-New configuration and development of new process.
- 15.-Hand on an established process.
- 16.-To visualize and see the results and to make comparisons with a specific unit process.
- 17.-Possibility of creating new process in relation with a specific unit.
- 18.-PLC Programming Exercises.
- 19.-Own PLC applications in accordance with teacher and student requirements.

b) Technical and Vocational Education configuration

⑧ AEDC/CAI. Computer Aided Instruction Software System.

This complete software package consists of an Instructor Software (INS/SOF) totally integrated with the Student Software (AEDC/SOF).

- INS/SOF. Classroom Management Software (Instructor Software):

The Instructor can:
 Organize Students by Classes and Groups.
 Create easily new entries or delete them.
 Create data bases with student information.
 Analyze results and make statistical comparisons.
 Generate and print reports.
 Detect student's progress and difficulties.

-AEDC/SOF. Computer Aided Instruction Software (Student Software):

It explains how to use the unit, run the experiments and what to do at any moment.

This Software contains:

Theory.
 Exercises.
 Guided Practices.
 Exams.

⑨ AEDC/FSS. Faults Simulation System.

Faults Simulation System (FSS) is a Software package that simulates several faults in any EDIBON Computer Controlled Unit.

The "FAULTS" mode consists in causing several faults in the unit normal operation. The student must find them and solve them.

There are several kinds of faults that can be grouped in the following sections:

- Faults affecting the sensors measurement:
- An incorrect calibration is applied to them.
 - Non-linearity.
- Faults affecting the actuators:
- Actuators channels interchange at any time during the program execution.
 - Response reduction of an actuator.
- Faults in the controls execution:
- Inversion of the performance in ON/OFF controls.
 - Reduction or increase of the calculated total response.
 - The action of some controls is annulled.
- On/off faults:
- Several on/off faults can be included.

c) Higher Education and/or Technical and Vocational Education configuration

19 AEDC/CAL. Computer Aided Learning Software (Results Calculation and Analysis).

This Computer Aided Learning Software (CAL) is a Windows based software, simple and very easy to use.

CAL is a class assistant that helps in doing the necessary calculations to extract the right conclusions from data obtained during the experimental practices. CAL computes the value of all the variables involved and performs the calculations.

It allows to plot and print the results. Within the plotting options, any variable can be represented against any other.

Different plotting displays.

It has a wide range of information, such as constant values, unit conversion factors and integral and derivative tables.

d) Multipost Expansions options

20 Mini ESN. EDIBON Mini Scada-Net System.

EDIBON Mini Scada-Net System allows up to 30 students to work with a Teaching Unit in any laboratory, simultaneously.

The Mini ESN system consists of the adaptation of any EDIBON Computer Controlled Unit with SCADA and PID Control integrated in a local network.

This system allows to view/control the unit remotely, from any computer integrated in the local net (in the classroom), through the main computer connected to the unit.

Main characteristics:

- It allows up to 30 students to work simultaneously with the EDIBON Computer Controlled Unit with SCADA and PID Control, connected in a local net.
- Open Control + Multicontrol + Real Time Control + Multi Student Post.
- Instructor controls and explains to all students at the same time.
- Any user/student can work doing "real time" control/multicontrol and visualisation.
- Instructor can see in the computer what any user/student is doing in the unit.
- Continuous communication between the instructor and all the users/students connected.

Main advantages:

- It allows an easier and quicker understanding.
- This system allows you can save time and cost.
- Future expansions with more EDIBON Units.

The system basically will consist of:

This system is used with a Computer Controlled Unit.

- Instructor's computer.
- Students' computers.
- Local Network.
- Unit-Control Interface adaptation.
- Unit Software adaptation.
- Webcam.
- Mini ESN Software to control the whole system.
- Cables and accessories required for a normal operation.

* Specifications subject to change without previous notice, due to the convenience of improvement of the product.



C/ Del Agua, 14. Polígono Industrial San José de Valderas.
28918 LEGANÉS. (Madrid). SPAIN.
Phone: 34-91-6199363 FAX: 34-91-6198647
E-mail: edibon@edibon.com WEB site: www.edibon.com

Edition: ED01/16
Date: March/2016

REPRESENTATIVE

