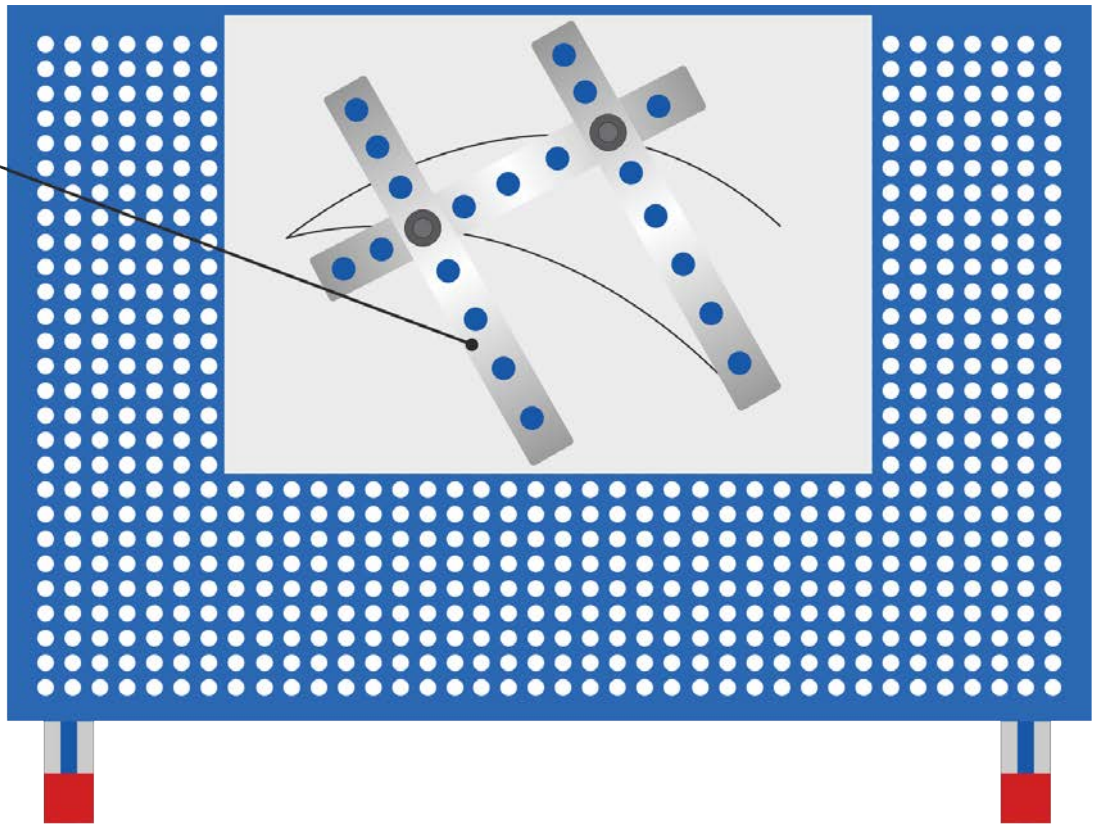


BARS WITH HOLES
Barras con Agujeros



www.edibon.com
↳ PRODUCTS
↳ 70.- MECHANICS

GENERAL DESCRIPTION

The Bar Linkages Unit “MBLU” allows many experiments using different arrangements of their parts.

The “MBLU” unit includes a selection of more than 20 perforated bars of different lengths and pivots or ‘joints’ to allow students to configure multiple choices of linkages.

Students assemble the bars and joints in any arrangement and note how the linkage converts movement from one form to another (for example; rotary motion to linear motion). Bar linkages are one of the most basic mechanisms used in mechanical engineering.

The unit includes magnetic ‘wipeable’ sheets and holders for non-permanent markers so the student can mark the relative movements of the linkages or joints.

The unit presents students to key engineering terms such as four-bar linkages, rotary and linear movement, and planar linkages.



ISO 9001: Quality Management (for Design, Manufacturing, Commercialization and After-sales service)



European Union Certificate (total safety)



Certificates ISO 14001 and ECO-Management and Audit Scheme (environmental management)



Certificate and Worlddidac Member

SPECIFICATIONS

Bench-top unit with adjustable legs.

Anodized aluminum frame and panels in painted steel.

The MBLU unit mainly consists of:

Storage suitcase that includes:

A set of bars:

4 bars with 17 holes.

6 bars with 13 holes.

6 bars with 9 holes.

6 bars with 5 holes.

Joints and pen holders.

Magnetic wipeable sheets.

Non-permanent markers.

Screwdriver and spanner.

Manuals: This unit is supplied with the following manuals: Required services, Assembly and Installation, Starting-up, Security, Maintenance and Practices manual.

EXERCISES AND PRACTICAL POSSIBILITIES

1.- Four-bar linkages – crank rocker, double rocker, drag link and parallelogram.

2.- Straight line linkages – Watt's straight line, Chebyshev, Peaucellier-Lipkin, Hart's inversor, Robert's and Hoeken's

3.- Pantograph.

4.- Ackermann steering.

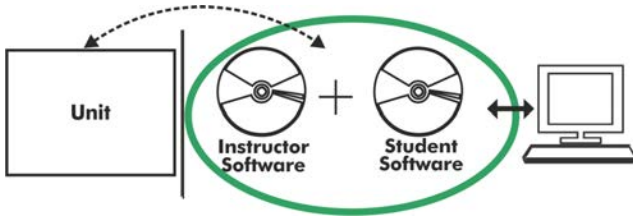
DIMENSIONS AND WEIGHTS

-Dimensions: 435 x 300 x 90 mm. approx. (17.12 x 11.81 x 3.54 in. approx.)

-Weight: 3 Kg. approx. (6.61 pounds approx.).

Optional

MBLU/ICAI. Interactive Computer Aided Instruction Software System:



With no physical connection between unit and computer (PC), this complete software package consists of an Instructor Software (EDIBON Classroom Manager -ECM-SOF) totally integrated with the Student Software (EDIBON Student Labsoft -ESL-SOF). Both are interconnected so that the teacher knows at any moment what is the theoretical and practical knowledge of the students.

Instructor Software

-ECM-SOF. EDIBON Classroom Manager (Instructor Software).

ECM-SOF is the application that allows the Instructor to register students, manage and assign tasks for workgroups, create own content to carry out Practical Exercises, choose one of the evaluation methods to check the Student knowledge and monitor the progression related to the planned tasks for individual students, workgroups, units, etc... so the teacher can know in real time the level of understanding of any student in the classroom.

Innovative features:

User Data Base Management.

Administration and assignment of Workgroups, Tasks and Training sessions.

Creation and Integration of Practical Exercises and Multimedia Resources.

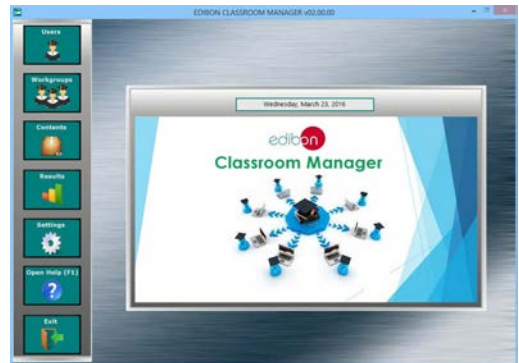
Custom Design of Evaluation Methods.

Creation and assignment of Formulas & Equations.

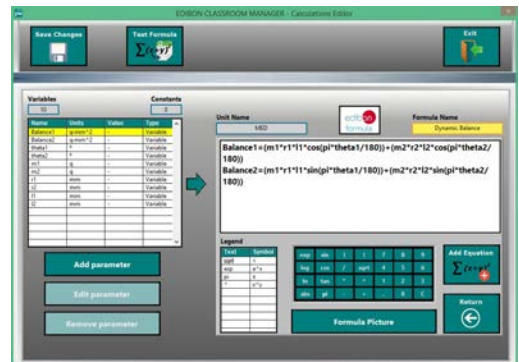
Equation System Solver Engine.

Updatable Contents.

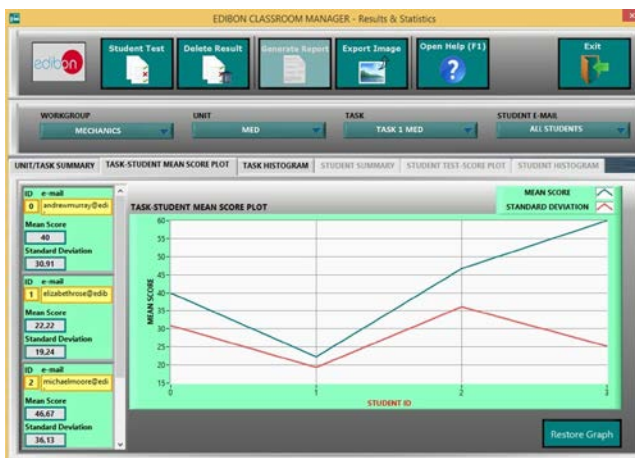
Report generation, User Progression Monitoring and Statistics.



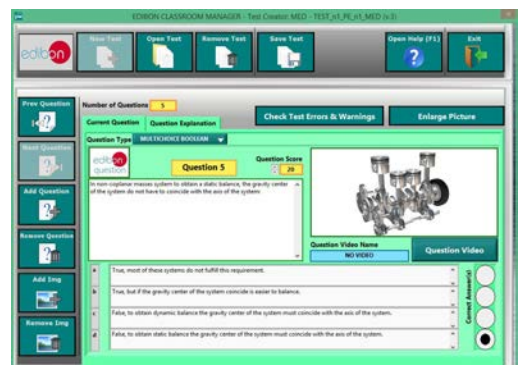
ECM. EDIBON Classroom Manager (Instructor Software) Application Main Screen



ECAL. EDIBON Calculations Program Package - Formula Editor Screen



ETTE. EDIBON Training Test & Exam Program Package - Main Screen with Numeric Result Question



ERS. EDIBON Results & Statistics Program Package - Student Scores Histogram

Optional

Student Software

-ESL-SOF. EDIBON Student Labsoft (Student Software).

ESL-SOF is the application addressed to the Students that helps them to understand theoretical concepts by means of practical exercises and to prove their knowledge and progression by performing tests and calculations in addition to Multimedia Resources. Default planned tasks and an Open workgroup are provided by EDIBON to allow the students start working from the first session. Reports and statistics are available to know their progression at any time, as well as explanations for every exercise to reinforce the theoretically acquired technical knowledge.

Innovative features:

Student Log-In & Self-Registration.

Existing Tasks checking & Monitoring.

Default contents & scheduled tasks available to be used from the first session.

Practical Exercises accomplishment by following the Manual provided by EDIBON.

Evaluation Methods to prove your knowledge and progression.

Test self-correction.

Calculations computing and plotting.

Equation System Solver Engine.

User Monitoring Learning & Printable Reports.

Multimedia-Supported auxiliary resources.

For more information see ICAI catalogue. Click on the following link:

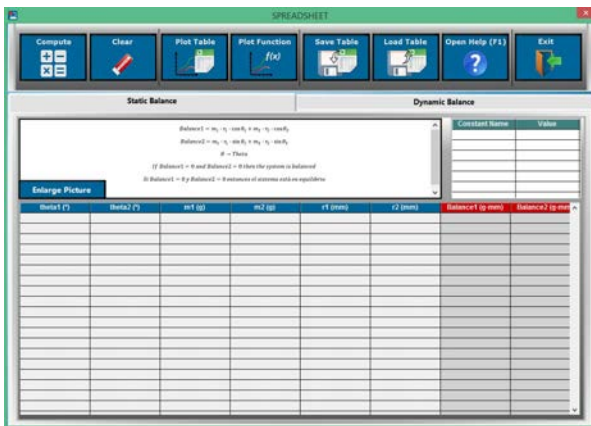
www.edibon.com/en/files/expansion/ICAI/catalog



ESL. EDIBON Student LabSoft (Student Software) Application Main Screen



EPE. EDIBON Practical Exercise Program Package Main Screen



ERS. EDIBON Results & Statistics Program Package - Question Explanation



ECAL. EDIBON Calculations Program Package Main Screen

* Specifications subject to change without previous notice, due to the convenience of improvement of the product.



C/ Del Agua, 14. Polígono Industrial San José de Valderas.
28918 LEGANÉS. (Madrid). SPAIN.
Phone: 34-91-6199363 FAX: 34-91-6198647
E-mail: edibon@edibon.com WEB site: www.edibon.com

Edition: ED01/17
Date: March/2017

REPRESENTATIVE:

