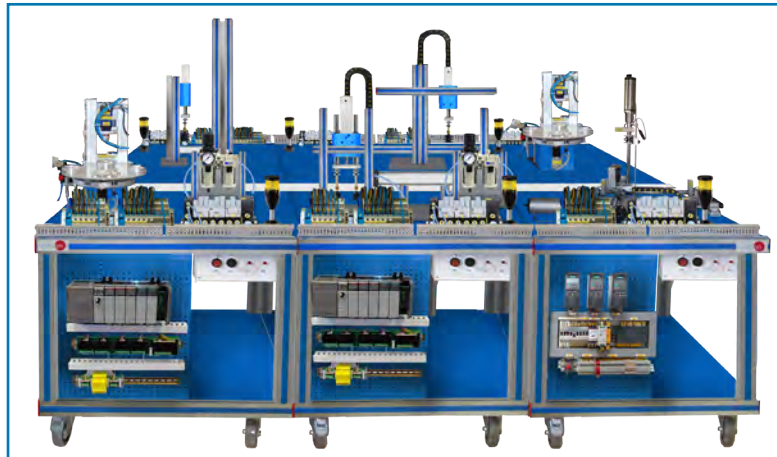


Engineering and Technical
Teaching Equipment

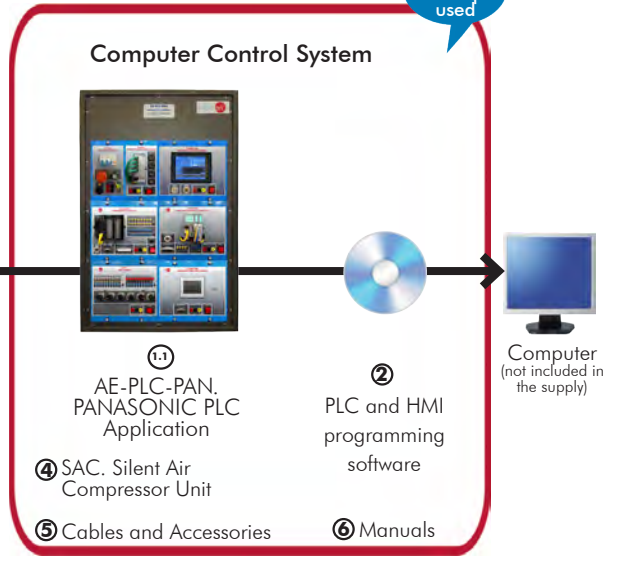
Available with PLC, as:
- PANASONIC
- SIEMENS
- MITSUBISHI
- ALLEN BRADLEY
- OMRON
Etc...

EDIBON PATENT

Teaching
Technique
used

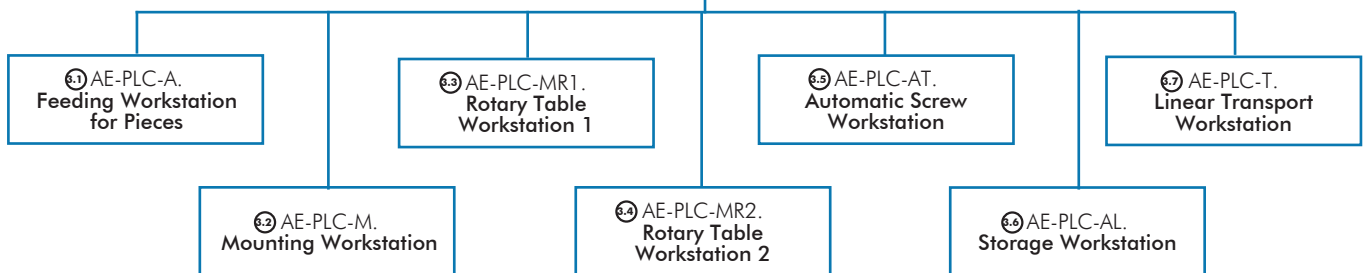


① Unit: AE-PLC-FMS2. Flexible Manufacturing System 2



* Minimum supply always includes: 1 + 2 + 3 + 4 + 5 + 6 (Computer not included in the supply)

③ Component Workstations:



Key features:

- **Open Control + Multicontrol + Real-Time Control.**
- **PLC and HMI programming software.**
- **Projector and/or electronic whiteboard compatibility allows the unit to be explained and demonstrated to an entire class at one time.**
- **Capable of doing applied research, real industrial simulation, training courses, etc.**
- **Remote operation and control by the user and remote control for EDIBON technical support, are always included.**
- **Totally safe, utilizing 3 safety systems (Mechanical, Electrical & Electronic).**
- **Designed and manufactured under several quality standards.**
- **Optional software to perform 2D and 3D simulations of the processes studied and supervise and control the real system (SCADA).**
- **Optional ICAI software to create, edit and carry out practical exercises, tests, exams, calculations, etc. Apart from monitoring user's knowledge and progress reached.**

**OPEN CONTROL
+
MULTICONTROL
+
REAL TIME CONTROL**

www.edibon.com
↳ PRODUCTS
↳ 60.. MECHATRONICS & COMPUMECHATRONICS



ISO 9001: Quality Management (for Design, Manufacturing, Commercialization and After-sales service)



European Union Certificate (total safety)



Certificates ISO 14001 and ECO-Management and Audit Scheme (environmental management)



Certificate and Worlddidac Member

INTRODUCTION

Since the 1950s, the computer integration in the manufacturing systems it has been a complete revolution, increasing productivity and quality of all type of products. These computer integration systems included a lot of component from very different technologies as hydraulic, pneumatic, electrical, robotics, chemical, etc. For this reason these types of systems requires workers with specific skills to ensure that they are working properly.

The Flexible Manufacturing System 2, "AE-PLC-FMS2", has been designed by EDIBON to study how a complete manufacturing system works.

The "AE-PLC-FMS2" system includes a set of practical exercises through which the student will understand how work a piece feeding system, four different mounting systems and an automatic storing system.

GENERAL DESCRIPTION

The Flexible Manufacturing System 2, "AE-PLC-FMS2" is a modular system composed of five workstations: the Feeding Workstation for Pieces "AE-PLC-A", the Mounting Workstation "AE-PLC-M", the Rotary Table Workstation 1 "AE-PLC-MR1", the Rotary Table Workstation 2 "AE-PLC-MR2", the Automatic Screw Workstation "AE-PLC-AT", the Storage Workstation "AE-PLC-AL" and the Linear Transport Workstation "AE-PLC-T".

The objective of the "AE-PLC-FMS2" system is to provide a base piece and mount three different pieces and screws inside it, once the piece is complete, the system storage them in a specific position of the depot.

The process of the "AE-PLC-FMS2" is explained in the following lines:

- First, the feeding system provides the base pieces with the correct dimensions and place them on the linear transport system.
- Then, the mounting workstation provide another piece, and after verify that is correct, mount them inside the base piece placed on the linear transport system.
- After that, two rotary table workstations provide two pieces of different colors, dimensions and materials to be mounted inside the base piece.
- Then, the automatic screw workstation put three screws in the Base pieces to finish them.
- Finally, the storage workstation that take the base pieces through an automatic manipulator and place them in the programmed place of the storage.

Each workstation is locally commanded by a PLC device and, in turn, a central PLC coordinates all workstations. The communication network between workstations and PC is based on the Ethernet protocol.

The "AE-PLC-FMS2" system design by EDIBON allows the users to learn the basic concepts of automation as the operation of an Ethernet network or how to program a PLC and about other areas as pneumatic, electro-pneumatic, vacuum technology, etc.

The optional "AE-AS" software is design to teach the students how works real automation software. This software allows making 2D and 3D processes simulations, supervising and controlling SCADA systems, programming and communicating PLCs, simulating hydraulic, pneumatic and electronic devices' operation, etc.

Practical possibilities to be done with the Flexible Manufacturing System 2 (AE-PLC-FMS2):

- 1.- Introduction to flexible manufacturing system (FMS).
- 2.- Introduction to pneumatics and electro-pneumatics.
- 3.- Introduction to vacuum technology.
- 4.- Study of the sensor detection.
- 5.- Testing the digital inputs and outputs of the automatic system through a PLC.
- 6.- Modify manufacturing parameters through the PLC.
- 7.- Configuration of a pneumatic application.
- 8.- Introduction to the Human-machine interface systems (HMI).
- 9.- Study of an automatic control of an industrial system.
- 10.- Control of the flexible manufacturing system through a central PLC in an Ethernet network with local PLC in each workstation.
- 11.- Manage the flexible manufacturing system through the HMI device.

Practical possibilities to be done with the optional software Automation Systems Simulation Software (AE-AS):

- 12.- Introduction to the SCADA control system.
- 13.- OPC server system with Ethernet.
- 14.- SCADA control of an automatic industrial system through PC.

Practical possibilities to be done with the Workstation alone:

- Feeding Workstation for Pieces (AE-PLC-A).

- 15.- Manual control of a Feeding system.
- 16.- Automatic control of a Feeding system.
- 17.- Change the parameters of the Feeding process.
- 18.- Optimize the process time.
- 19.- Study and analysis of the faults inserted in the process with the fault generation module.

- Mounting Workstation (AE-PLC-M).

- 20.- Manual control of a mounting system.
- 21.- Automatic control of a mounting system.
- 22.- Change the parameters of the mounting process.
- 23.- Optimization of the process time.
- 24.- Study and analysis of the faults inserted in the process with the fault generation module.

- Rotary Table Workstation 1 (AE-PLC-MR1).

- 25.- Manual control of the rotary table system.
- 26.- Manual control of the feeding system on a rotary table.
- 27.- Manual control of the quality control and mounting process on a rotary table.

- 28.- Automatic control of the rotary table system.
- 29.- Automatic control of the feeding system on a rotary table.
- 30.- Automatic control of the quality control and mounting process on a rotary table.
- 31.- Change the parameters of the rotary table process.
- 32.- Optimize the process time.
- 33.- Study and analysis of the faults inserted in the process with the fault generation module.

- Rotary Table Workstation 2 (AE-PLC-MR2).

- 34.- Manual control of the rotary table system.
- 35.- Manual control of the quality control and drilling process on a rotary table.
- 36.- Automatic control of the rotary table system.
- 37.- Automatic control of the quality control and drilling process on a rotary table.
- 38.- Change the parameters of the rotary table process.
- 39.- Optimize the process time.
- 40.- Study and analysis of the faults inserted in the process with the fault generation module.

- Automatic Screw Workstation (AE-PLC-AT).

- 41.- Manual control of a screwing system.
- 42.- Automatic control of a screwing system.
- 43.- Change the parameters of the screwing process.
- 44.- Optimize the process time.
- 45.- Study and analysis of the faults inserted in the process with the fault generation module.

- Storage Workstation (AE-PLC-AL).

- 46.- Manual control of a storing system.
- 47.- Automatic control of a storing system.
- 48.- Change the parameters of the storing process.
- 49.- Optimize the process time.
- 50.- Study and analysis of the faults inserted in the process with the fault generation module.

- Linear Transport Workstation (AE-PLC-T).

- 51.- Manual control of a transporting system.
- 52.- Automatic control of a transporting system.
- 53.- Change the parameters of a transporting process.
- 54.- Optimize the process time.
- 55.- Study and analysis of the faults inserted in the process with the fault generation module.

REQUIRED SERVICES

- Electrical supply: single phase, 220V./50 Hz. or 110V./60 Hz.
- Computer.

DIMENSIONS AND WEIGHTS

AE-PLC-FMS2:

-Dimensions: 4000 x 2500 x 1500 mm. approx.
(157.47 x 98.42 x 59.05 inches approx.)

-Weight: 750 Kg. approx.
(1984 pounds approx.).

RECOMMENDED ACCESSORIES (Not Included)

- AE-AS. Automation System Simulation Software (Optional).

AVAILABLE VERSIONS

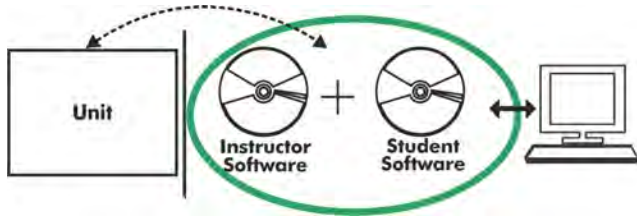
- AE-PLC-FMS2. Flexible Manufacturing System 2.

Offered in this catalogue:

- AE-PLC-FMS1. Flexible Manufacturing System 1.
- AE-PLC-FMS3. Flexible Manufacturing System 3.
- AE-PLC-FMS4. Flexible Manufacturing System 4.
- AE-PLC-FMS5. Flexible Manufacturing System 5.
- AE-PLC-FMS6. Flexible Manufacturing System 6.
- AE-PLC-FMS7. Flexible Manufacturing System 7.
- AE-PLC-FMS8. Flexible Manufacturing System 8.
- AE-PLC-FMS9. Flexible Manufacturing System 9.
- AE-PLC-FMS10. Flexible Manufacturing System 10.
- AE-PLC-FMS11. Flexible Manufacturing System 11.
- AE-PLC-FMS12. Flexible Manufacturing System 12.
- AE-PLC-FMS13. Flexible Manufacturing System 13.
- AE-PLC-FMS14. Flexible Manufacturing System 14.

Offered in other catalogue:

AE-PLC-FMS2/ICAI. Interactive Computer Aided Instruction Software System:



With no physical connection between unit and computer (PC), this complete software package consists of an Instructor Software (EDIBON Classroom Manager -ECM-SOF) totally integrated with the Student Software (EDIBON Student Labsoft -ESL-SOF). Both are interconnected so that the teacher knows at any moment what is the theoretical and practical knowledge of the students.

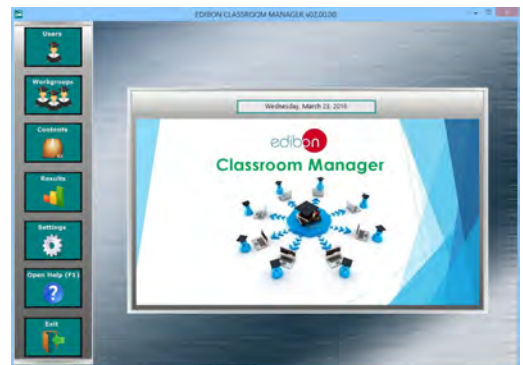
Instructor Software

- ECM-SOF. EDIBON Classroom Manager (Instructor Software).

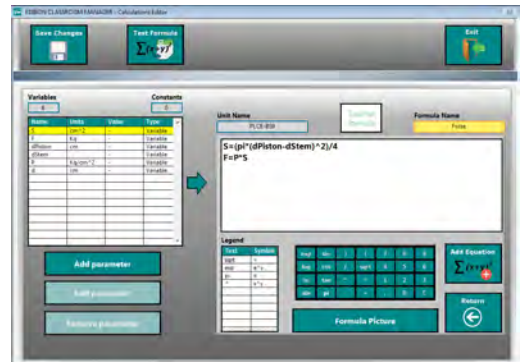
ECM-SOF is the application that allows the Instructor to register students, manage and assign tasks for workgroups, create own content to carry out Practical Exercises, choose one of the evaluation methods to check the Student knowledge and monitor the progression related to the planned tasks for individual students, workgroups, units, etc... so the teacher can know in real time the level of understanding of any student in the classroom.

Innovative features:

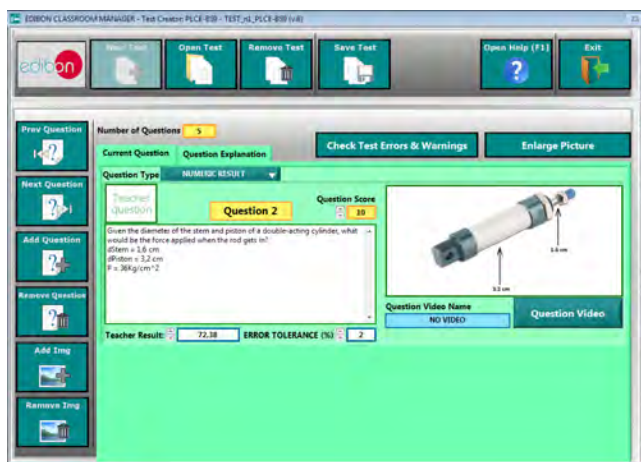
- User Data Base Management.
- Administration and assignment of Workgroup, Task and Training sessions.
- Creation and Integration of Practical Exercises and Multimedia Resources.
- Custom Design of Evaluation Methods.
- Creation and assignment of Formulas & Equations.
- Equation System Solver Engine.
- Updatable Contents.
- Report generation, User Progression Monitoring and Statistics.



ECM-SOF. EDIBON Classroom Manager (Instructor Software) Application Main Screen



ECAL. EDIBON Calculations Program Package - Formula Editor Screen



ETTE. EDIBON Training Test & Exam Program Package - Main Screen with Numeric Result Question



ERS. EDIBON Results & Statistics Program Package - Student Scores Histogram

- ESL-SOF. EDIBON Student Labsoft (Student Software).

ESL-SOF is the application addressed to the Students that helps them to understand theoretical concepts by means of practical exercises and to prove their knowledge and progression by performing tests and calculations in addition to Multimedia Resources. Default planned tasks and an Open workgroup are provided by EDIBON to allow the students start working from the first session. Reports and statistics are available to know their progression at any time, as well as explanations for every exercise to reinforce the theoretically acquired technical knowledge.

Innovative features:

- Student Log-In & Self-Registration.
- Existing Tasks checking & Monitoring.
- Default contents & scheduled tasks available to be used from the first session.
- Practical Exercises accomplishment by following the Manual provided by EDIBON.
- Evaluation Methods to prove your knowledge and progression.
- Test self-correction.
- Calculations computing and plotting.
- Equation System Solver Engine.
- User Monitoring Learning & Printable Reports.
- Multimedia-Supported auxiliary resources.

For more information see ICAI catalogue. Click on the following link:

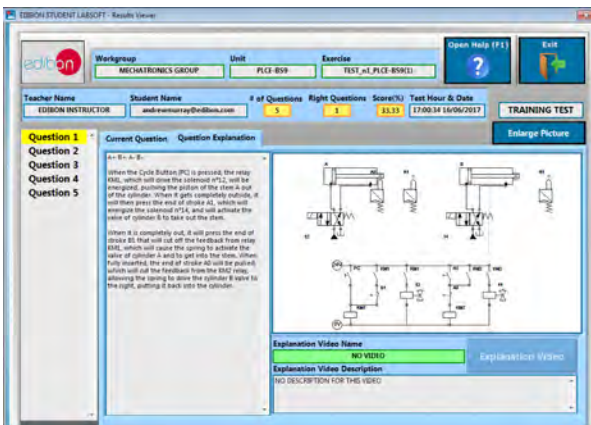
www.edibon.com/en/files/expansion/ICAI/catalog



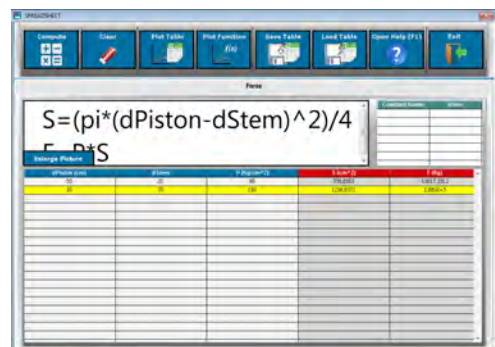
ESL-SOF. EDIBON Student LabSoft (Student Software) Application Main Screen



EPE. EDIBON Practical Exercise Program Package Main Screen



ERS. EDIBON Results & Statistics Program Package - Question Explanation



ECAL. EDIBON Calculations Program Package Main Screen

* Specifications subject to change without previous notice, due to the convenience of improvement of the product.



C/ Del Agua, 14. Polígono Industrial San José de Valderas.
28918 LEGANÉS. (Madrid). ESPAÑA - SPAIN.
Tel.: 34-91-6199363 Fax: 34-91-6198647
E-mail: edibon@edibon.com Web: www.edibon.com

Edition: ED01/17
Date: November/2017

REPRESENTATIVE:

