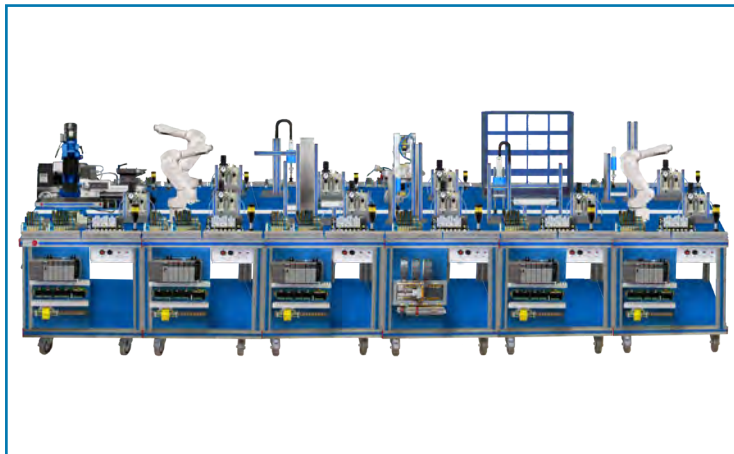


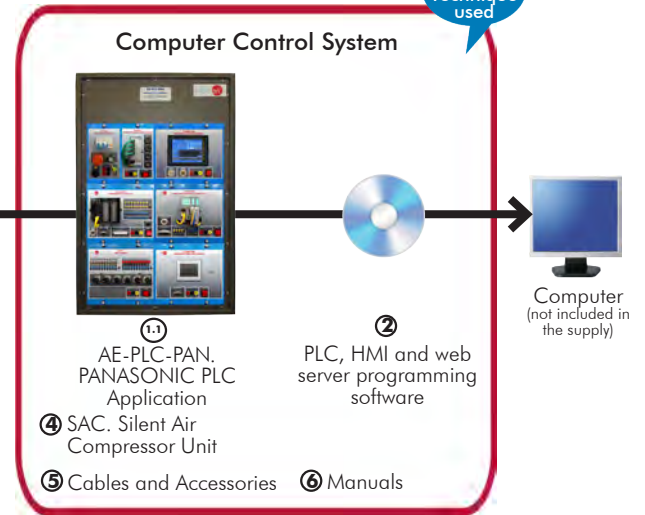
Available with PLC, as:
- PANASONIC
- SIEMENS
- MITSUBISHI
- ALLEN BRADLEY
- OMRON
Etc...

EDIBON PATENT

Teaching
Technique
used

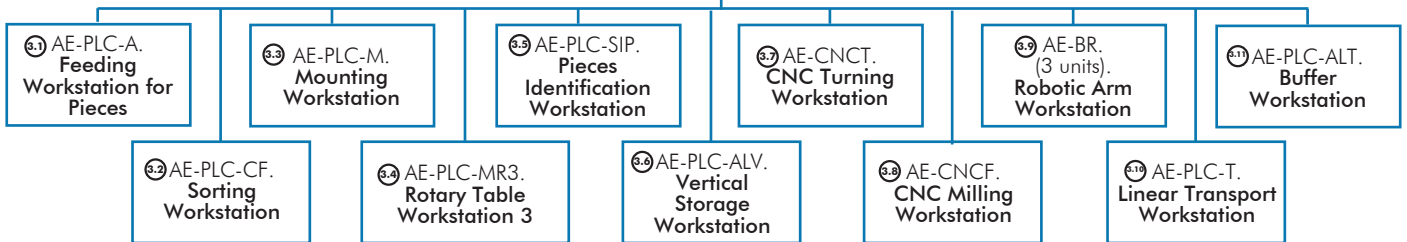


① Unit: AE-PLC-FMS13. Flexible Manufacturing System 13



* Minimum supply always includes: 1 + 2 + 3 + 4 + 5 + 6 (Computer not included in the supply)

③ Component Workstations:



Key features:

- **Open Control + Multicontrol + Real-Time Control.**
- **PLC, HMI and web server programming software.**
- **Projector and/or electronic whiteboard compatibility allows the unit to be explained and demonstrated to an entire class at one time.**
- **Capable of doing applied research, real industrial simulation, training courses, etc.**
- **Remote operation and control by the user and remote control for EDIBON technical support, are always included.**
- **Totally safe, utilizing 3 safety systems (Mechanical, Electrical & Electronic).**
- **Designed and manufactured under several quality standards.**
- **Optional software to perform 2D and 3D simulations of the processes studied and supervise and control the real system (SCADA).**
- **Optional ICAI software to create, edit and carry out practical exercises, tests, exams, calculations, etc. Apart from monitoring user's knowledge and progress reached.**

**OPEN CONTROL
+
MULTICONTROL
+
REAL TIME CONTROL**

www.edibon.com
PRODUCTS
➤ 60.- MECHATRONICS & COMPUMECHATRONICS

For more information about Key Features, click here



ISO 9001: Quality Management (for Design, Manufacturing, Commercialization and After-sales service)



European Union Certificate (total safety)



Certificates ISO 14001 and ECO-Management and Audit Scheme (environmental management)



"Worlddidac Quality Charter" and Platinum Member of Worlddidac

INTRODUCTION

Since the 1950s, the computer integration in the manufacturing systems it has been a complete revolution, increasing productivity and quality of all type of products. These computer integration systems included a lot of component from very different technologies as hydraulic, pneumatic, electrical, robotics, chemical, etc. For this reason these types of systems requires workers with specific skills to ensure that they are working properly.

The Flexible Manufacturing System 13, "AE-PLC-FMS13", has been designed by EDIBON to study how work a complete manufacturing system.

The "AE-PLC-FMS13" system includes a set of practical exercises through which the student will understand how work an automatic pieces feeding system, a transport system, a sorting system, two different mounting systems, a piece identification system, two storage systems, two CNC systems to milling and turning pieces, two robotic arm to pick and place the pieces from and to the CNC machines and one robotic arm to disassembly the pieces.

GENERAL DESCRIPTION

The Flexible Manufacturing System 13, "AE-PLC-FMS13" is a modular system composed of thirteen workstations: the "AE-PLC-A" Feeding Workstation for Pieces, the "AE-PLC-CF" Sorting Workstation, the "AE-PLC-M" Mounting Workstation, the "AE-PLC-MR3" Rotary Table Workstation 3, the "AE-PLC-SIP" Pieces Identification Workstation, the "AE-PLC-ALV" Vertical Storage Workstation, the Buffer Workstation, the "AE-CNCT" CNC Turning Workstation, the "AE-CNCF" CNC Milling Workstation, three "AE-BR" Robotic Arm Workstation and the "AE-PLC-T" Linear Transport Workstation.

The objective of the "AE-PLC-FMS13" system is to provide the system with pieces of different colors, heights and materials, and place the pieces on the linear transport workstation. Along the process, the different workstation take the pieces from the linear transport system and perform different processes as mounting additional pieces inside the base pieces, identifying the pieces, storing the pieces in a buffer system, storing the pieces in a vertical storage system, turning and milling the pieces on a CNC machines through a robotic arms and disassembly the pieces with the third robotic arm.

The process of the "AE-PLC-FMS13" is explained in the following lines:

- First, the feeding system provides the pieces of different colors, materials and heights. The feeding system place the pieces on the linear transport system to move the pieces to the following workstation. Then, the sorting workstation classifies the pieces at three different places depending of the pieces characteristics detected.
- The mounting workstation mount the milled and turned pieces, manufactured on the CNC turning and milling machines. The pieces are load and taken from the CNC system with a robotic arm for each machine.
- Then, a buffer storage take the pieces from the linear transport system and hold the pieces till the system require them.
- Finally, there a vertical storing system to store the pieces or is disassembly by a robotic arm workstation.

The "AE-PLC-FMS13" system design by EDIBON allows the users to learn the basic concepts of automation as the operation of an Ethernet network or how to program a PLC and about other areas as pneumatic, electro-pneumatic, etc.

Each workstation is locally commanded by a PLC device and, in turn, a central PLC coordinates all workstations. The communication network between workstations and PC is based on the Ethernet protocol.

The Robotic Arms and the CNC machines included in the "AE-PLC-FMS13" system, contains the control console and the programming software in order to program and operate with them.

The optional "AE-AS" software is design to teach the students how works real automation software. This software allows making 2D and 3D processes simulations, supervising and controlling SCADA systems, programming and communicating PLCs, simulating hydraulic, pneumatic and electronic devices' operation, etc.

Practical possibilities to be done with the Flexible Manufacturing System 13 (AE-PLC-FMS13):

- 1.-Introduction to flexible manufacturing system (FMS).
- 2.-Introduction to pneumatics and electro-pneumatics.
- 3.-Introduction to vacuum technology.
- 4.-Study of the sensor detection.
- 5.-Testing the digital inputs and outputs of the automatic system through a PLC.
- 6.-Modify manufacturing parameters through the PLC.
- 7.-Configuration of a pneumatic application.
- 8.-Introduction to the Human-machine interface systems (HMI).
- 9.-Study of an automatic control of an industrial system.
- 10.-Control of the flexible manufacturing system through a central PLC in an Ethernet network with local PLC in each workstation.
- 11.-Manage the flexible manufacturing system through the HMI device.

Practical possibilities to be done with the optional software Automation Systems Simulation Software (AE-AS):

- 12.-Introduction to the SCADA control system.
- 13.-OPC server system with Ethernet.
- 14.-SCADA control of an automatic industrial system through PC.

Practical possibilities to be done with the Workstation alone:

- Feeding Workstation for Pieces (AE-PLC-A).

- 15.-Manual control of a Feeding system.
- 16.-Automatic control of a Feeding system.
- 17.-Change the parameters of the Feeding process.
- 18.-Optimize the process time.
- 19.-Study and analysis of the faults inserted in the process with the fault generation module.

- Mounting Workstation (AE-PLC-M).

- 20.-Manual control of a mounting system.
- 21.-Automatic control of a mounting system.
- 22.-Change the parameters of the mounting process.
- 23.-Optimization of the process time.
- 24.-Study and analysis of the faults inserted in the process with the fault generation module.

- Sorting Workstation (AE-PLC-CF).

- 25.-Manual control of a sorting system.
- 26.-Automatic control of a sorting system.
- 27.-Change the parameters of the sorting process.
- 28.-Optimize the process time.
- 29.-Study and analysis of the faults inserted in the process with the fault generation module.

- Rotary Table Workstation 3 (AE-PLC-MR3).

- 30.-Manual control of the rotary table system.
- 31.-Manual control of the quality control and drilling process on a rotary table.
- 32.-Automatic control of the rotary table system.
- 33.-Automatic control of the quality control and drilling process on a rotary table.
- 34.-Change the parameters of the rotary table process.
- 35.-Optimize the process time.
- 36.-Study and analysis of the faults inserted in the process with the fault generation module.

- Pieces Identification Workstation (AE-PLC-SIP).

- 37.-Manual control of a quality control system.
- 38.-Automatic control of a quality control system.
- 39.-Change the parameters of the quality control system.

- 40.-Optimize the process time.
- 41.-Study and analysis of the faults inserted in the process with the fault generation module.

- Vertical Storage Workstation (AE-PLC-ALV).

- 42.-Manual control of a vertical storing system.
- 43.-Automatic control of a vertical storing system.
- 44.-Change the parameters of the storing process.
- 45.-Optimize the process time.
- 46.-Study and analysis of the faults inserted in the process with the fault generation module.

- Robotic Arm Workstation (AE-BR).

- 47.-Introduction to robotic systems.
- 48.-Robotic arm configuration.
- 49.-Set a simple movement of the robotic arm.
- 50.-Introduction to pneumatics and electro-pneumatics.
- 51.-Configuration of a pneumatic application.
- 52.-Set a simple pick and place function with the robotic arm.

- CNC Turning Workstation (AE-CNCT).

- 53.-Introduction to CNC systems.
- 54.-CNC machine configuration.
- 55.-Tools and clamping system of the CNC turning machine.
- 56.-Manual configuration of simple movements in the CNC turning machine.
- 57.-Loading the desire CAD file format in the CNC turning machine.
- 58.-Turning a piece with the desire specifications.

- CNC Milling Workstation (AE-CNCF).

- 59.-Introduction to CNC systems.
- 60.-CNC machine configuration.
- 61.-Tools and clamping system of the CNC milling machine.
- 62.-Manual configuration of simple movements in the CNC milling machine.
- 63.-Loading the desire CAD file format in the CNC milling machine.
- 64.-Milling a piece with the desire specifications.

- Linear Transport Workstation (AE-PLC-T).

- 65.-Manual control of a transporting system.
- 66.-Automatic control of a transporting system.
- 67.-Change the parameters of a transporting process.
- 68.-Optimize the process time.
- 69.-Study and analysis of the faults inserted in the process with the fault generation module.

Other possibilities to be done with this Unit:

- 70.-Many students view results simultaneously.
 - 71.-To view all results in real time in the classroom by means of a projector or an electronic whiteboard.
 - 72.-Open Control, Multicontrol and Real Time Control.
This unit allows intrinsically and/or extrinsically to change the span, gains; proportional, integral, derivative parameters; etc, in real time.
 - 73.-This unit is totally safe as uses mechanical, electrical and electronic, and software safety devices.
 - 74.-This unit can be used for doing applied research.
 - 75.-This unit can be used for giving training courses to Industries even to other Technical Education Institutions.
 - 76.-Visualization of all the sensors values used in the AE-PLC-FMS13 unit process.
- Several other exercises can be done and designed by the user.

REQUIRED SERVICES

- Electrical supply: single phase, 220V/50 Hz or 110V/60 Hz.
- Computer.

DIMENSIONS AND WEIGHTS

AE-PLC-FMS13:

- Dimensions: 7500 x 3500 x 1500 mm approx.
(295.27 x 137.79 x 59.05 inches approx.)
- Weight: 1500 Kg approx.
(3307 pounds approx.).

RECOMMENDED ACCESSORIES (Not Included)

- AE-AS. Automation System Simulation Software (Optional).

AVAILABLE VERSIONS

- AE-PLC-FMS13. Flexible Manufacturing System 13.
- AE-PLC-FMS1. Flexible Manufacturing System 1.
- AE-PLC-FMS2. Flexible Manufacturing System 2.
- AE-PLC-FMS3. Flexible Manufacturing System 3.
- AE-PLC-FMS4. Flexible Manufacturing System 4.
- AE-PLC-FMS5. Flexible Manufacturing System 5.
- AE-PLC-FMS6. Flexible Manufacturing System 6.
- AE-PLC-FMS7. Flexible Manufacturing System 7.
- AE-PLC-FMS8. Flexible Manufacturing System 8.
- AE-PLC-FMS9. Flexible Manufacturing System 9.
- AE-PLC-FMS10. Flexible Manufacturing System 10.
- AE-PLC-FMS11. Flexible Manufacturing System 11.
- AE-PLC-FMS12. Flexible Manufacturing System 12.
- AE-PLC-FMS14. Flexible Manufacturing System 14.

Offered in this catalogue:

Offered in other catalogue:

COMPLETE TECHNICAL SPECIFICATIONS (for optional items)

Additionally to the main items (1 to 6) described, we can offer, as optional, other items from 7 to 9.

All these items try to give more possibilities for:

- a) Technical and Vocational Education configuration. (ICAI)
- b) Multipost Expansions options. (MINI ESN and ESN)

a) Technical and Vocational Education configuration

⑦ AE-PLC-FMS13/ICAI. Interactive Computer Aided Instruction Software System.

This complete software package consists of an Instructor Software (EDIBON Classroom Manager - ECM-SOF) totally integrated with the Student Software (EDIBON Student Labsoft - ESL-SOF). Both are interconnected so that the teacher knows at any moment what is the theoretical and practical knowledge of the students.

This software is optional and can be used additionally to items (1 to 6).

- ECM-SOF. EDIBON Classroom Manager (Instructor Software).

ECM-SOF is the application that allows the Instructor to register students, manage and assign tasks for workgroups, create own content to carry out Practical Exercises, choose one of the evaluation methods to check the Student knowledge and monitor the progression related to the planned tasks for individual students, workgroups, units, etc... so the teacher can know in real time the level of understanding of any student in the classroom.

Innovative features:

- User Data Base Management.
- Administration and assignment of Workgroup, Task and Training sessions.
- Creation and Integration of Practical Exercises and Multimedia Resources.
- Custom Design of Evaluation Methods.
- Creation and assignment of Formulas & Equations.
- Equation System Solver Engine.
- Updatable Contents.
- Report generation, User Progression Monitoring and Statistics.

- ESL-SOF. EDIBON Student Labsoft (Student Software).

ESL-SOF is the application addressed to the Students that helps them to understand theoretical concepts by means of practical exercises and to prove their knowledge and progression by performing tests and calculations in addition to Multimedia Resources. Default planned tasks and an Open workgroup are provided by EDIBON to allow the students start working from the first session. Reports and statistics are available to know their progression at any time, as well as explanations for every exercise to reinforce the theoretically acquired technical knowledge.

Innovative features:

- Student Log-In & Self-Registration.
- Existing Tasks checking & Monitoring.
- Default contents & scheduled tasks available to be used from the first session.
- Practical Exercises accomplishment by following the Manual provided by EDIBON.
- Evaluation Methods to prove your knowledge and progression.
- Test self-correction.
- Calculations computing and plotting.
- Equation System Solver Engine.
- User Monitoring Learning & Printable Reports.
- Multimedia-Supported auxiliary resources.

For more information see ICAI catalogue. Click on the following link:

www.edibon.com/en/files/expansion/ICAI/catalog

Instructor Software



ECM-SOF. EDIBON Classroom Manager (Instructor Software) Application Main Screen

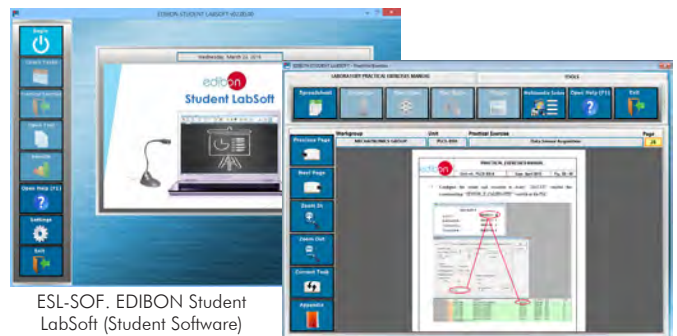
ECAL. EDIBON Calculations Program Package - Formula Editor Screen



ERS. EDIBON Results & Statistics Program Package - Student Scores Histogram

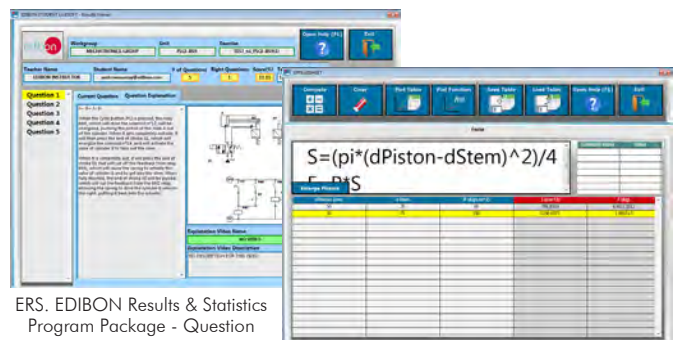
ETTE. EDIBON Training Test & Exam Program Package - Main Screen with Numeric Result Question

Student Software



ESL-SOF. EDIBON Student LabSoft (Student Software) Application Main Screen

EPE. EDIBON Practical Exercise Program Package Main Screen



ERS. EDIBON Results & Statistics Program Package - Question Explanation

ECAL. EDIBON Calculations Program Package Main Screen

b) Multipost Expansions options

⑧ **MINI ESN. EDIBON Mini Scada-Net System for being used with EDIBON Teaching Units.**

MINI ESN. EDIBON Mini Scada-Net System allows up to 30 students to work with a Teaching Unit in any laboratory, simultaneously. It is useful for both, Higher Education and/or Technical and Vocational Education.

The MINI ESN system consists of the adaptation of any EDIBON Computer Controlled Unit with SCADA integrated in a local network.

This system allows to view/control the unit remotely, from any computer integrated in the local net (in the classroom), through the main computer connected to the unit. Then, the number of possible users who can work with the same unit is higher than in an usual way of working (usually only one).

Main characteristics:

- It allows up to 30 students to work simultaneously with the EDIBON Computer Controlled Unit with SCADA, connected in a local net.
- Open Control + Multicontrol + Real Time Control + Multi Student Post.
- Instructor controls and explains to all students at the same time.
- Any user/student can work doing "real time" control/multicontrol and visualisation.
- Instructor can see in the computer what any user/student is doing in the unit.
- Continuous communication between the instructor and all the users/students connected.

Main advantages:

- It allows an easier and quicker understanding.
- This system allows you can save time and cost.
- Future expansions with more EDIBON Units.

For more information see MINI ESN catalogue. Click on the following link:

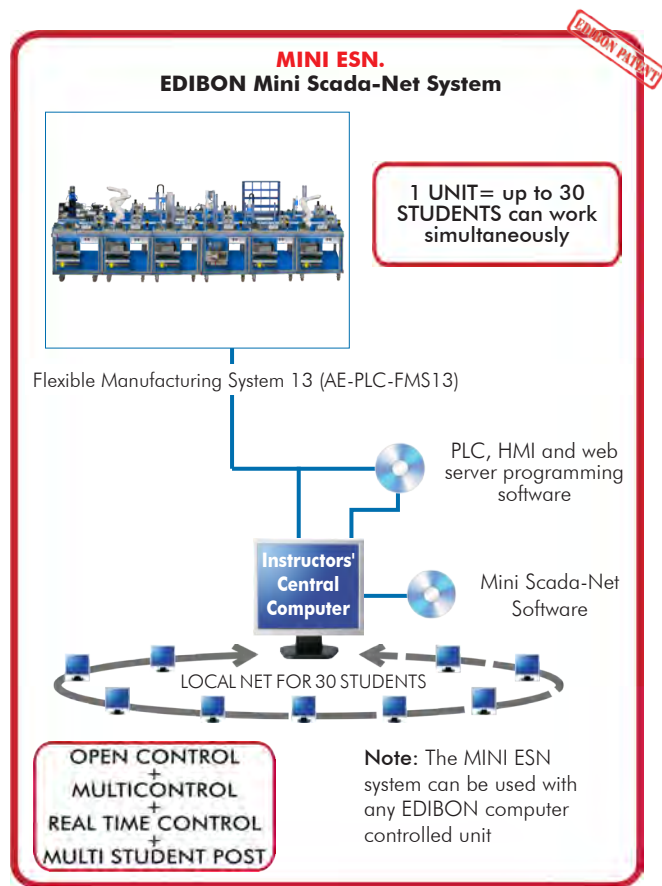
www.edibon.com/en/files/expansion/MINI-ESN/catalog

⑨ **ESN. EDIBON Scada-Net Systems.**

This unit can be integrated, in the future, into a Complete Laboratory with many Units and many Students.

For more information see ESN catalogue. Click on the following link:

www.edibon.com/en/files/expansion/ESN/catalog



ORDER INFORMATION

Main items (always included in the supply)

Minimum supply always includes:

- ① **Unit: AE-PLC-FMS13. Flexible Manufacturing System 13.**
- ② **PLC, HMI and web server programming software.**
- ③ **Component Workstations.**
 - ③.1 AE-PLC-A. **Feeding Workstation for Pieces.**
 - ③.2 AE-PLC-CF. **Sorting Workstation (2 units).**
 - ③.3 AE-PLC-M. **Mounting Workstation.**
 - ③.4 AE-PLC-MR3. **Rotary Table Workstation 3.**
 - ③.5 AE-PLC-SIP. **Pieces Identification Workstation.**
 - ③.6 AE-PLC-ALV. **Vertical Storage Workstation.**
 - ③.7 AE-CNCT. **CNC Turning Workstation.**
 - ③.8 AE-CNCF. **CNC Milling Workstation.**
 - ③.9 AE-BR. **Robotic Arm Workstation (3 units).**
 - ③.10 AE-PLC-T. **Linear Transport Workstation.**
 - ③.11 AE-PLC-ALT. **Buffer Workstation.**
- ④ **SAC. Silent Air Compressor Unit.**
- ⑤ **Cables and Accessories**, for normal operation.
- ⑥ **Manuals.**

***IMPORTANT:** Under AE-PLC-FMS13 we always supply all the elements for immediate running as 1, 2, 3, 4, 5 and 6.

Optional items (supplied under specific order)

a) Technical and Vocational Education configuration

- ⑦ AE-PLC-FMS13/ICAI. **Interactive Computer Aided Instruction Software System.**

b) Multipost Expansions options

- ⑧ Mini ESN. **EDIBON Mini Scada-Net System for being used with EDIBON Teaching Units.**
- ⑨ ESN. **EDIBON Scada-Net System.**

* Specifications subject to change without previous notice, due to the convenience of improvement of the product.



C/ Julio Cervera, 10-12-14. Móstoles Tecnológico.
28935 MÓSTOLES. (Madrid). ESPAÑA - SPAIN.
Tel.: 34-91-6199363 Fax: 34-91-6198647

E-mail: edibon@edibon.com Web: www.edibon.com

Edition: ED01/18
Date: April/2018

REPRESENTATIVE: